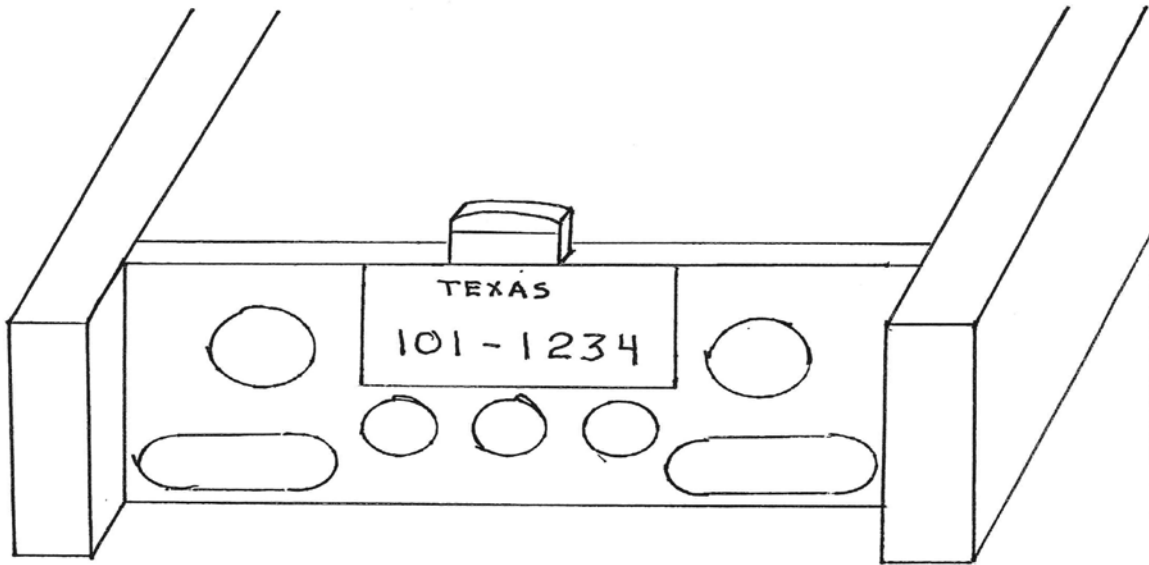


Attachment A

Below is a diagram of the preferred installation of the rear lights for all trucks listed in this request for bid.

LED Rear Truck Lights Possibly For Recessed Inside Truck Frame



ATTACHMENT A: EXISTING HAUL TRUCK



These images are provided for color match purposes.

FOLD UP STEPS 30-J



FOLD UP STEPS 30-J



KEY HOLE TIEDOWN 35-F



2 STEPS, INSIDE BED, LEFT 30-K

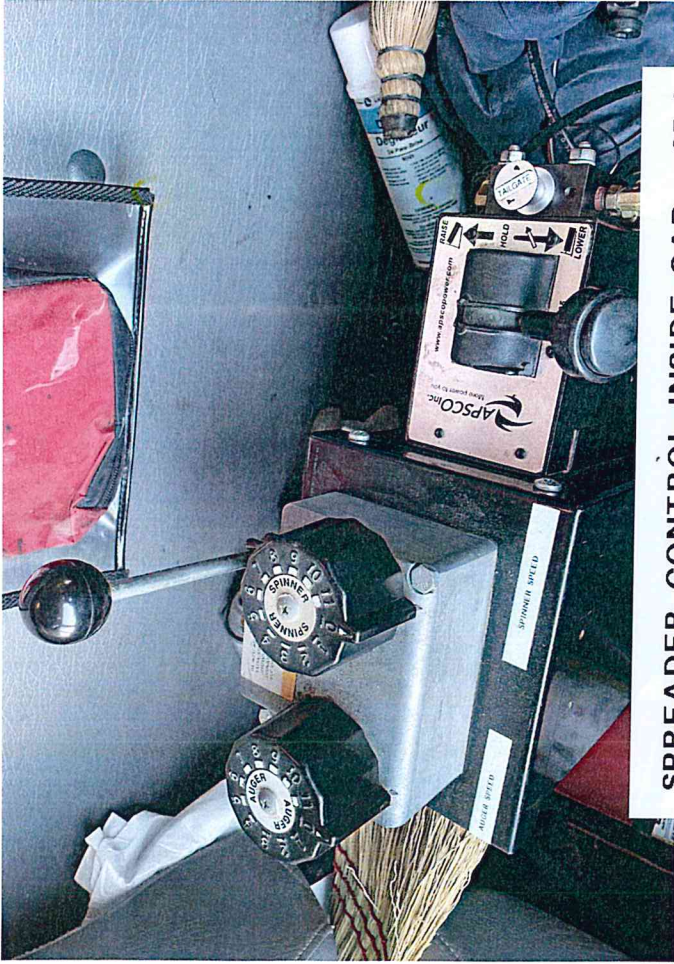


REAR TAIL LIGHTS, RECEASED

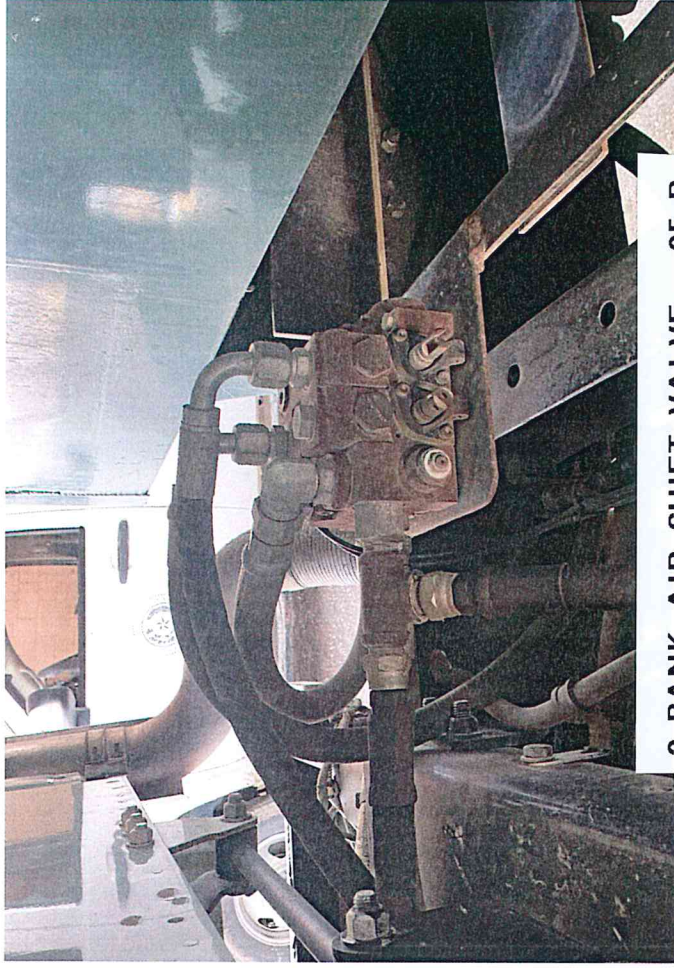
32-C

IN BETWEEN FRAME, SIDE TO SIDE,

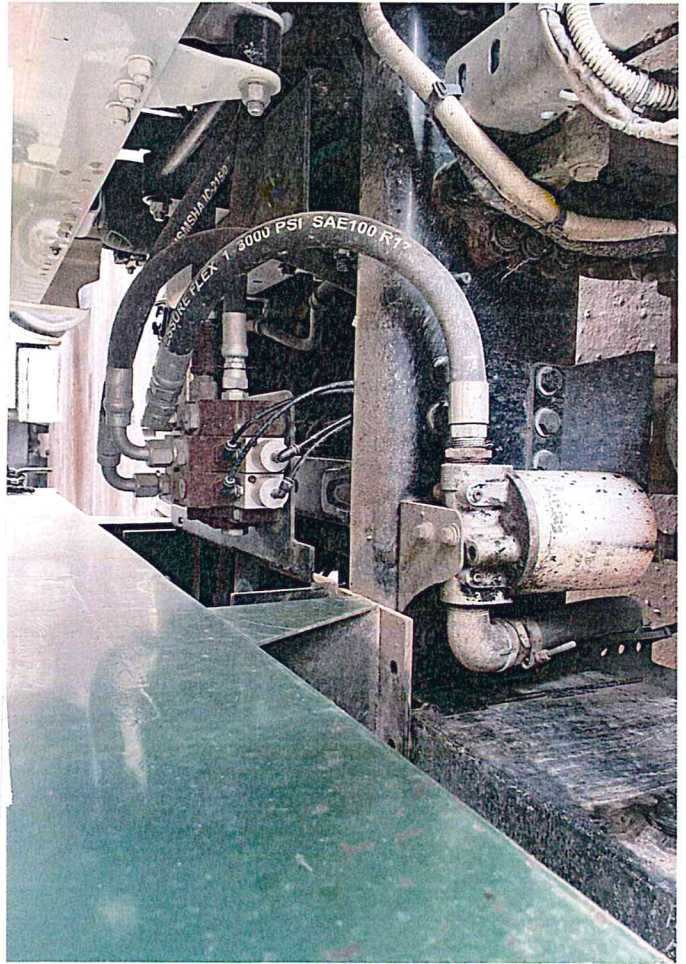
TOP TO BOTTOM STYLE



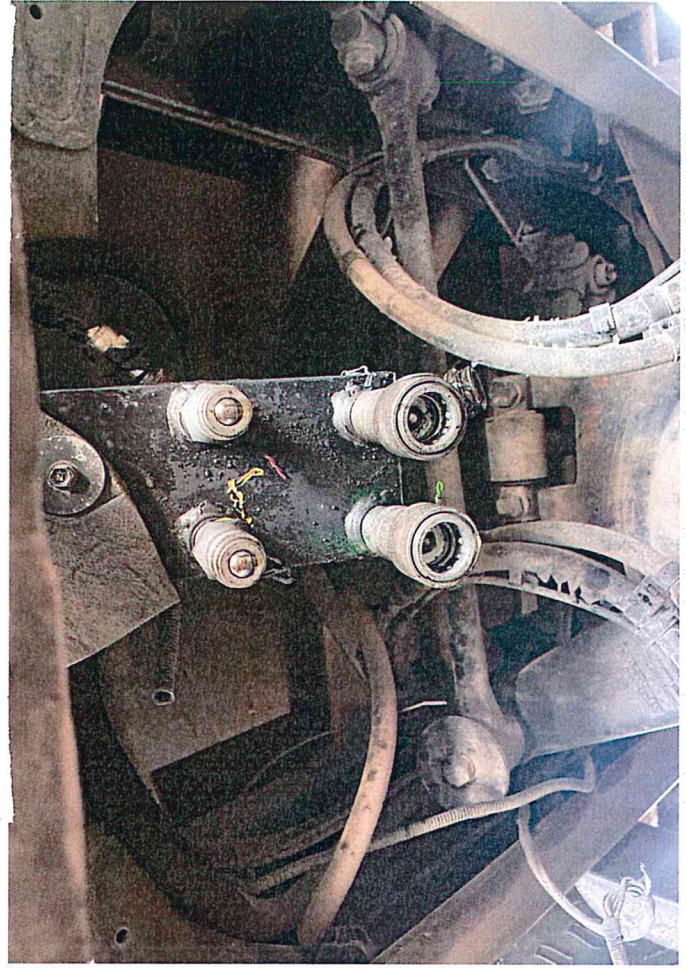
SPREADER CONTROL-INSIDE CAB 35-1



2-BANK AIR SHIFT VALVE 35-B



2-BANK AIR SHIFT VALVE 35-B



QUICK CONNECT, REAR OF TRUCK 35-E