

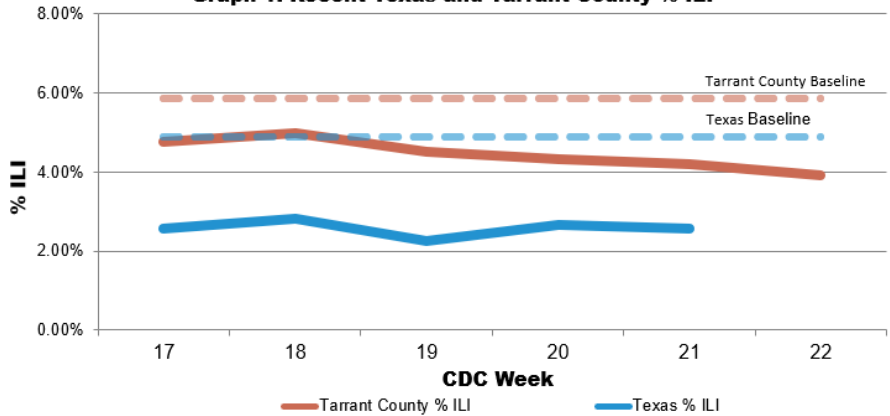


Tarrant County Influenza Surveillance Weekly Report  
CDC Week 22: May 28 — June 03, 2023

Influenza Activity Code:  
County and State Levels

|                                |
|--------------------------------|
| <b>Tarrant County: Week 22</b> |
| Sporadic                       |
| <b>Tarrant County: Week 21</b> |
| Sporadic                       |
| <b>Texas: Week 21</b>          |
| Minimal                        |

Graph 1. Recent Texas and Tarrant County % ILI



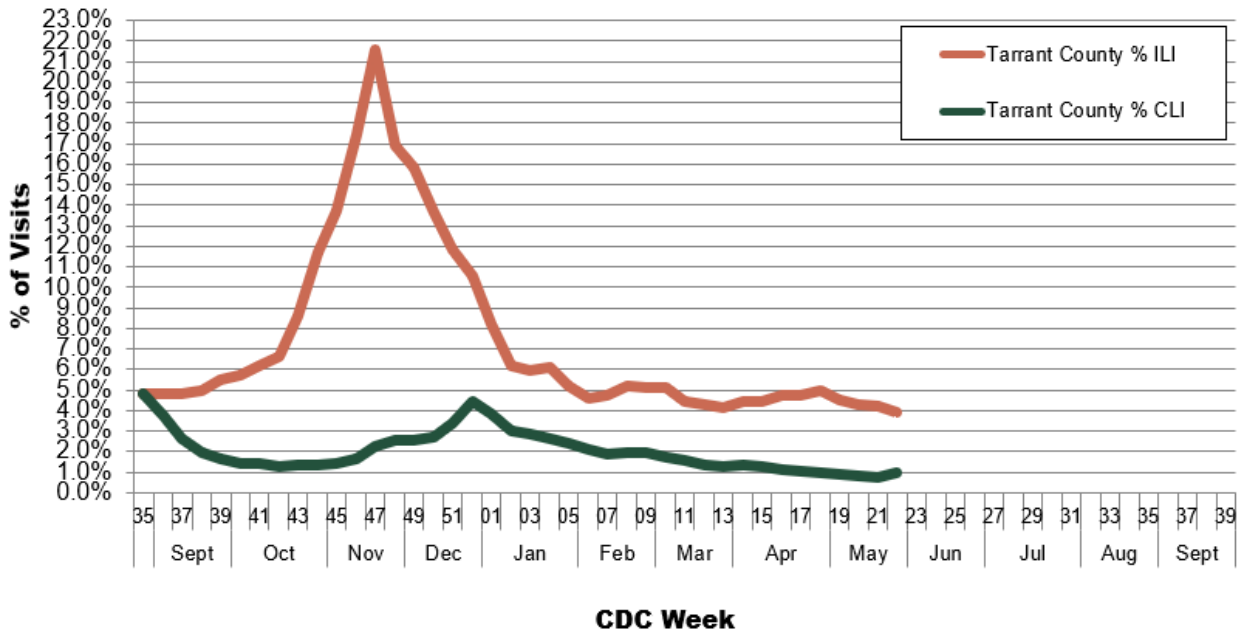
**NOTE: The COVID-19 outbreak unfolding in the United States may affect healthcare seeking behavior which in turn would impact ILI data.**

**Respiratory Virus Activity Summary**

- The percentage of reported influenza-like illness (ILI) in Tarrant County decreased from 4.2% in week 21 to 3.9% in week 22 and is currently below the 2022-2023 Tarrant County baseline (5.9%).
- Due to school closures for summer break, no absenteeism information is available for week 22.
- The percentage of flu test positives in Tarrant County decreased from 2.2% in Week 21 to 2.0% in Week 22.
- Based on data from the Electronic Surveillance System for the Early Notification of Community-based Epidemics, the percentage of patients hospitalized following ER visits who were diagnosed with influenza was 0.1% in week 22.
- During the 2022-2023 influenza season, as of Week 22, 0 Tarrant County influenza-associated pediatric deaths have been reported. In Week 21, 1 influenza-associated pediatric death(s) have been reported in Texas, with a total of 154 reported in the United States for 2022-2023.
- During the 2022-2023 influenza season, a total of 11 influenza outbreak(s) have been reported in Tarrant County within institutions in Tarrant County.
- Since last report, 5 surveillance specimens were tested. Cumulatively this season, the North Texas Regional Laboratory at Tarrant County Public Health has tested 670 surveillance specimens and of these, 123 have been positive for influenza and 80 have been positive for SARS-CoV-2.
- In Texas during Week 21 the proportion of outpatient visits for ILI, 2.6%, was under the state baseline of 4.9%.
- Nationally during Week 21, 1.2% of specimens tested and reported to the CDC were positive for influenza. The proportion of outpatient visits for ILI (1.9%) was below the national baseline (2.5%). The proportion of deaths in Week 21 attributed to pneumonia, influenza, and COVID-19 from the National Center for Health Statistics (7.0%) was above the epidemic threshold (6.3%).

# Influenza Like Illness (ILI) and COVID-19 Like Illness (CLI)

**Graph 2. Tarrant County % ILI and % CLI**

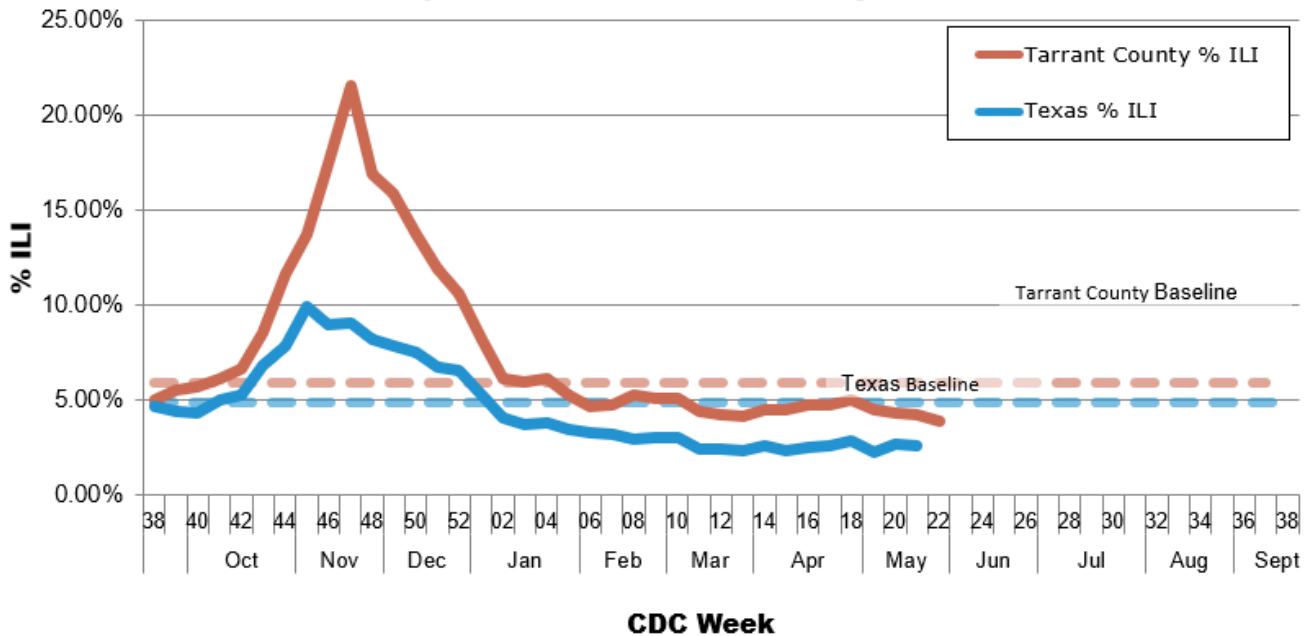


COVID-19-like illness is defined as visits with a mention of Fever AND (Cough OR Shortness of Breath OR Difficulty Breathing) AND NOT (Influenza Diagnosis). These counts do not reflect confirmed diagnosis of COVID-19.

NOTE: Tarrant County ILI and CLI activity are assessed using information available from the Electronic Surveillance System for the Early Notification of Community-based Epidemics (ESSENCE). ILI and CLI visits are determined by identifying key terms and codes within the chief complaint field (i.e. the patients stated reason for visit), and diagnosis code field (i.e. ICD-9-CM and ICD-10-CM codes).

## Influenza Like Illness (ILI)

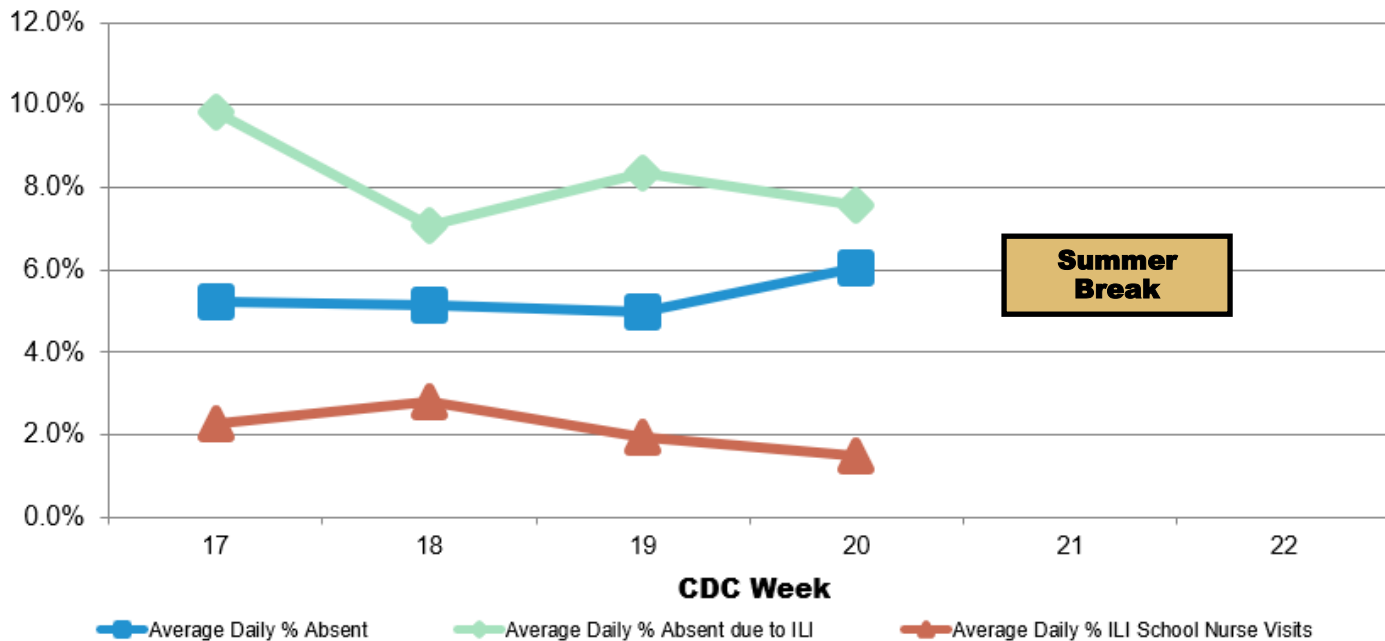
**Graph 3. Texas and Tarrant County % ILI**



In Week 22, 3.9% of visits to health care providers were due to ILI. ILI levels are currently below the county established baseline of 5.9% and are higher than the state of Texas levels from the week prior.

## School Absenteeism

**Graph 4. Absenteeism and ILI, Tarrant County**



Due to school closures for summer break, no absenteeism information is available for week 22.

## Influenza Test Results

**Table 1. Influenza Test Results, Tarrant County**

| CDC Week Number               | 20    | 21    | 22    |
|-------------------------------|-------|-------|-------|
| # Influenza Tests Performed   | 1932  | 1849  | 1411  |
| % Influenza Positive          | 2.3%  | 2.2%  | 2.0%  |
| # Influenza A Positive        | 5     | 9     | 4     |
| % Influenza A Positive        | 11.4% | 22.0% | 14.3% |
| # Influenza B Positive        | 39    | 32    | 24    |
| % Influenza B Positive        | 88.6% | 78.0% | 85.7% |
| # Non-differentiated Positive | 0     | 0     | 0     |
| % Non-differentiated Positive | 0.0%  | 0.0%  | 0.0%  |

NOTE: Tarrant County influenza test results are reported weekly by influenza surveillance participants. For CDC Week 22, rapid influenza test results were reported by 6 hospitals.

# North Texas Regional Lab Influenza, SARS-CoV-2 Test Results

**Table 2. North Texas Regional Laboratory: Respiratory Virus Results<sup>1</sup>**

|   | Current Week | 2022-2023 Season |
|---|--------------|------------------|
| <b>Number of Specimens Tested</b>       | <b>5</b>     | <b>670</b>       |
| Positive Specimens                      | 0 (0.0%)     | 203 (30.3%)      |
| <b>Influenza A</b>                      | 0 (0.0%)     | 115 (56.7%)      |
| Influenza A H1                          | 0 (0.0%)     | 42 (36.5%)       |
| Influenza A H3                          | 0 (0.0%)     | 72 (62.6%)       |
| Influenza A, Inconclusive subtype       | 0 (0.0%)     | 1 (.9%)          |
| Influenza A, Unsubtypeable <sup>2</sup> | 0 (0.0%)     | 0 (0.0%)         |
| <b>Influenza B</b>                      | 0 (0.0%)     | 8 (3.9%)         |
| Influenza B Yamagata <sup>3</sup>       | 0 (0.0%)     | 0 (0.0%)         |
| Influenza B Victoria <sup>3</sup>       | 0 (0.0%)     | 5 (62.5%)        |
| Influenza B, Inconclusive               | 0 (0.0%)     | 3 (37.5%)        |
| <b>SARS-CoV-2<sup>4</sup></b>           | 0 (0.0%)     | 80 (39.4%)       |
| <b>Inconclusive<sup>5</sup></b>         | 0            | 0                |

<sup>1</sup> Laboratory results based on real-time PCR analysis; information is for the 2022-2023 season.

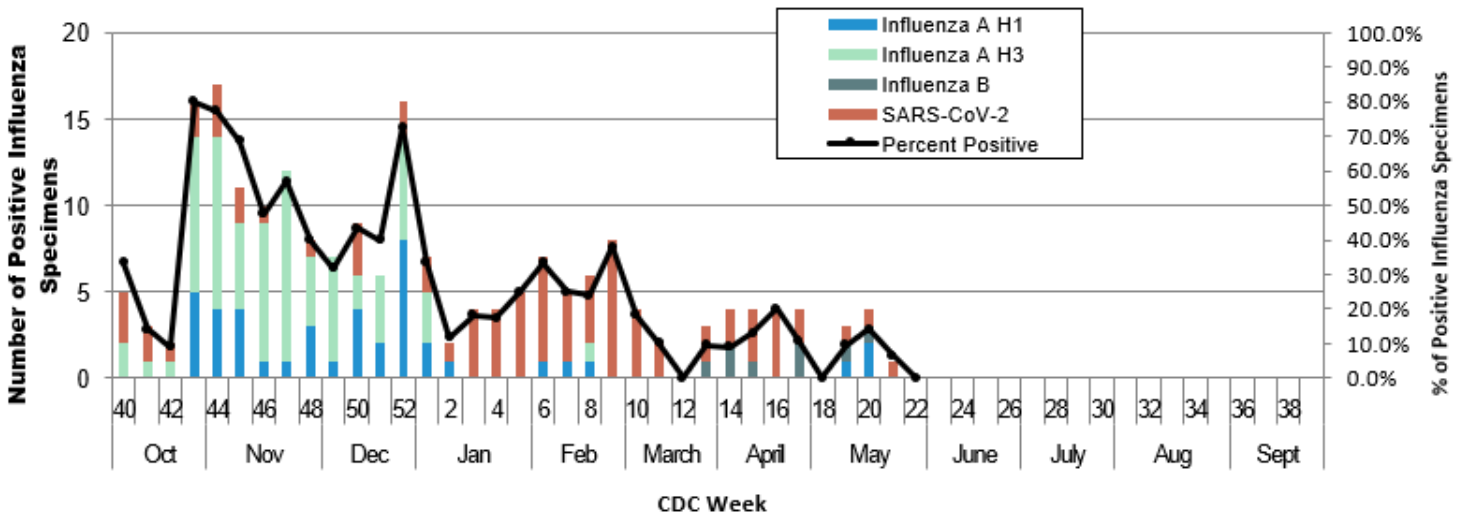
<sup>2</sup> Influenza A subtype not determined; further analysis pending

<sup>3</sup> Influenza B genotyping is only included in current week column if genotyping occurred in the same week as original PCR testing.

<sup>4</sup> Specimens that contain influenza co-infections with SARS-CoV-2 are not included in the SARS-CoV-2 positive specimen count

<sup>5</sup> Inconclusive for influenza A and influenza B; not included in positive specimens count.

**Graph 5. North Texas Regional Laboratory: Influenza and SARS-CoV-2 Virus Results<sup>1</sup>**



Since last report, 5 surveillance specimens were tested for influenza and SARS-CoV-2. Percent positivity for week 22 was 0.0% with 0 testing positive for Influenza A H3, 0 testing positive for Influenza A H1, 0 testing positive for Influenza B-Victoria, 0 testing positive for Influenza B-Yamagata, 0 testing positive for Influenza B-inconclusive, and 0 testing positive for SARS-CoV-2.

## Tarrant County NREVSS Test Results

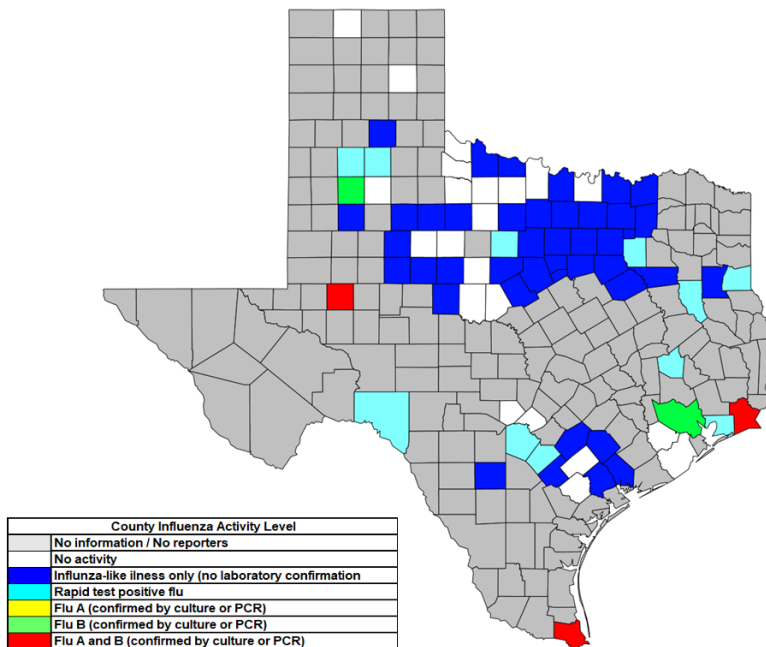
**CDC week 22 NREVSS results were not reported for Tarrant County.**

The National Respiratory and Enteric Virus Surveillance System (NREVSS) is a laboratory-based system that monitors temporal and geographic circulation patterns (patterns occurring in time and place) of respiratory syncytial virus (RSV), human parainfluenza viruses (HPIV), human metapneumovirus (HMPV), respiratory adenoviruses, human coronavirus, rotavirus, and norovirus. In this surveillance system, participating U.S. laboratories voluntarily report weekly to CDC the total number of weekly aggregate tests performed to detect these viruses, and the weekly aggregate positive tests.

*NOTE: Enteric viruses are not included in the TCPH Influenza report. Parainfluenza II has been omitted due to infrequent incidence.*

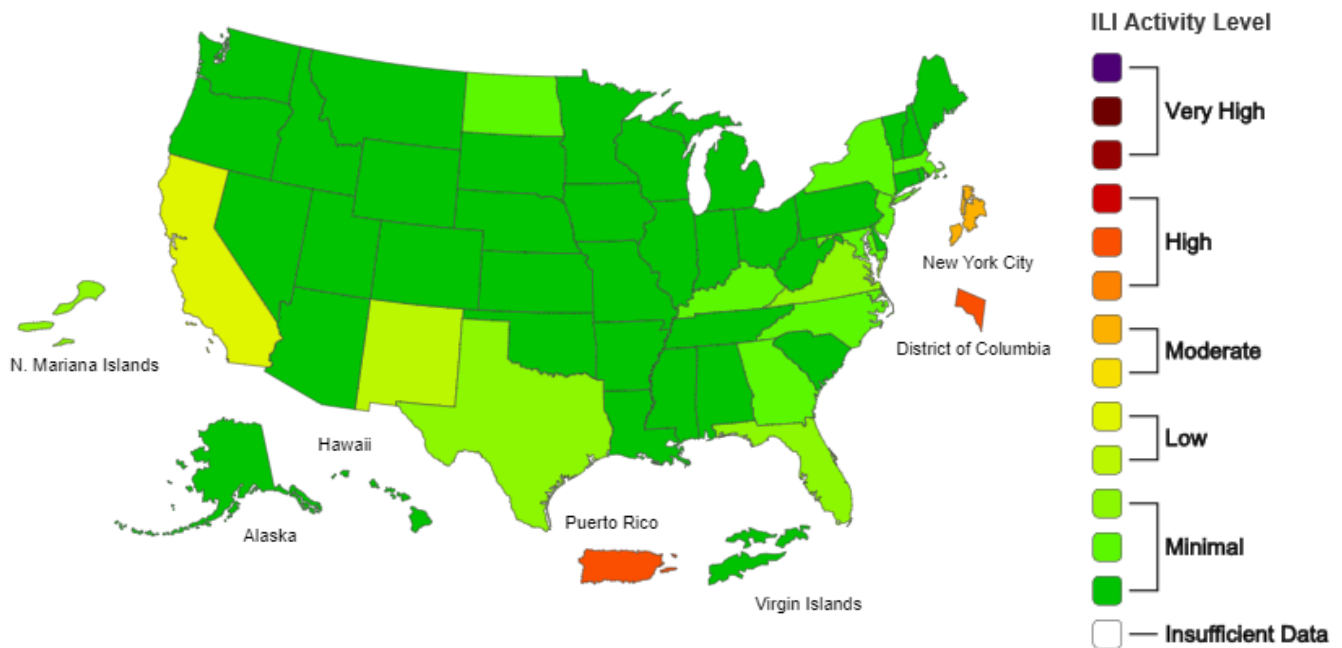
# Texas and National Influenza and ILI Activity

**Map 1: Texas County Specific Influenza Activity, CDC Week 21**



Influenza activity level corresponds to current MMWR week only and does not reflect previous weeks' activity. The majority of influenza cases are not reportable by law to the Texas Department of State Health Services. This map contains data from sentinel sites and does not represent all influenza cases in the state. Positive laboratory results are reported according to specimen collection date or date received in the lab if the former is unknown. <https://www.dshs.texas.gov/IDCU/disease/influenza/surveillance/2020-2021.aspx>

**Map 2: ILINet Activity Indicator Map, CDC Week 21**



Data collected in ILINet are used to produce a measure of ILI activity by state. Activity levels are based on the percent of outpatient visits in a state due to ILI and are compared to the average percent of ILI visits that occur during spring and fall weeks with little or no influenza virus circulation. This map uses the proportion of outpatient visits to health care providers for influenza-like illness to measure the ILI activity level within a state. It does not, however, measure the extent of geographic spread of flu within a state. Therefore, outbreaks occurring in a single city could cause the state to display high activity levels. Data collected in ILINet may disproportionately represent certain populations within a state, and therefore, may not accurately depict the full picture of influenza activity for the whole state. <http://www.cdc.gov/flu/weekly/>

*The Tarrant County Influenza Surveillance Weekly Report* is available on the Tarrant County Public Health web

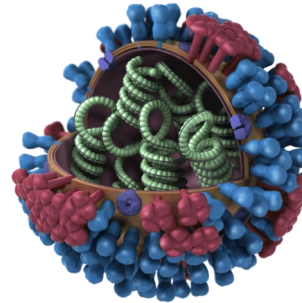
[www.tarrantcounty.com/flu](http://www.tarrantcounty.com/flu)

If you have questions or comments regarding influenza surveillance, please contact:

**Jeffrey Billarreal, MD, MPH**  
*Epidemiologist*  
jabillarreal@tarrantcountytx.gov

**Tarrant County Public Health**  
**Influenza Surveillance**  
**Epidemiology and Health Information**

**1101 South Main Street, Suite 2200**  
**Fort Worth, TX 76104**



**Veerinder (Vinny) Taneja, MBBS; MPH**  
*Director, Tarrant County Public Health*

NOTE:

Influenza-like Illness (ILI) is defined as fever (temperature  $\geq 100^{\circ}\text{F}$ ) plus a cough OR a sore throat, in the absence of a known cause other than influenza.

Tarrant County reporting quadrants consist of Northwest, Northeast, Southwest and Southeast regions within the boundaries of Interstate 35 and Interstate 30.

Tarrant County ILI baselines were determined using a similar method as the Centers for Disease Control Prevention Regional ILI baselines and Texas Department of State Health Services Texas baseline. Regional ILI baselines are determined by the Centers for Disease Control and Prevention and can be accessed at <http://www.cdc.gov/flu/weekly/overview.htm>

Additional information regarding Tarrant County, Texas and national ILI activity can be accessed at

[flu.tarrantcounty.com](http://flu.tarrantcounty.com)

<https://www.dshs.texas.gov/IDCU/disease/influenza/surveillance/2022-2023-Texas-Influenza-Surveillance-Activity/>

<http://www.cdc.gov/flu/weekly/>

**Russ Jones, MPH**  
**Division Manager & Chief Epidemiologist**  
**Epidemiology and Health Information**  
**Tarrant County Public Health**

**Main Epidemiology Division Number : (817) 321-5350**  
**Disease Reporting Fax Number: (817) 850-2366**