

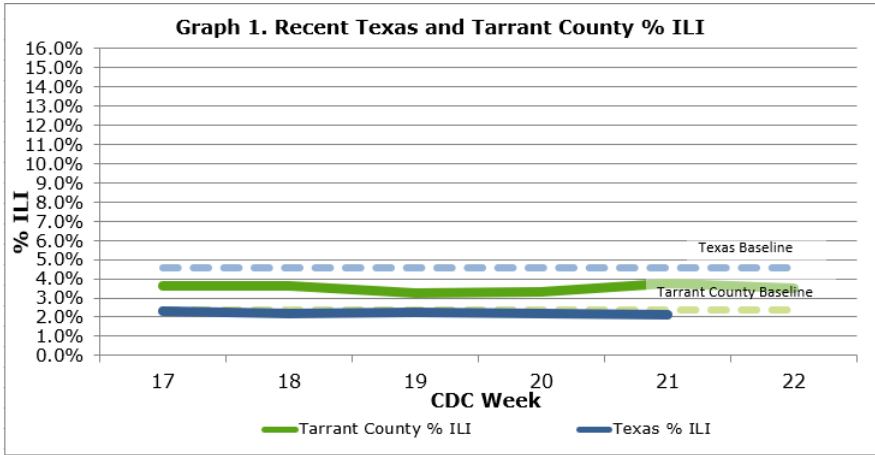
Tarrant County Public Health
Division of Epidemiology and Health Information



Tarrant County Influenza Surveillance Weekly Report
CDC Week 22: May 29—June 04, 2022

**Influenza Activity Code:
County and State Levels**

Tarrant County: Week 22
Regional
Tarrant County: Week 21
Local
Texas: Week 21
Minimal

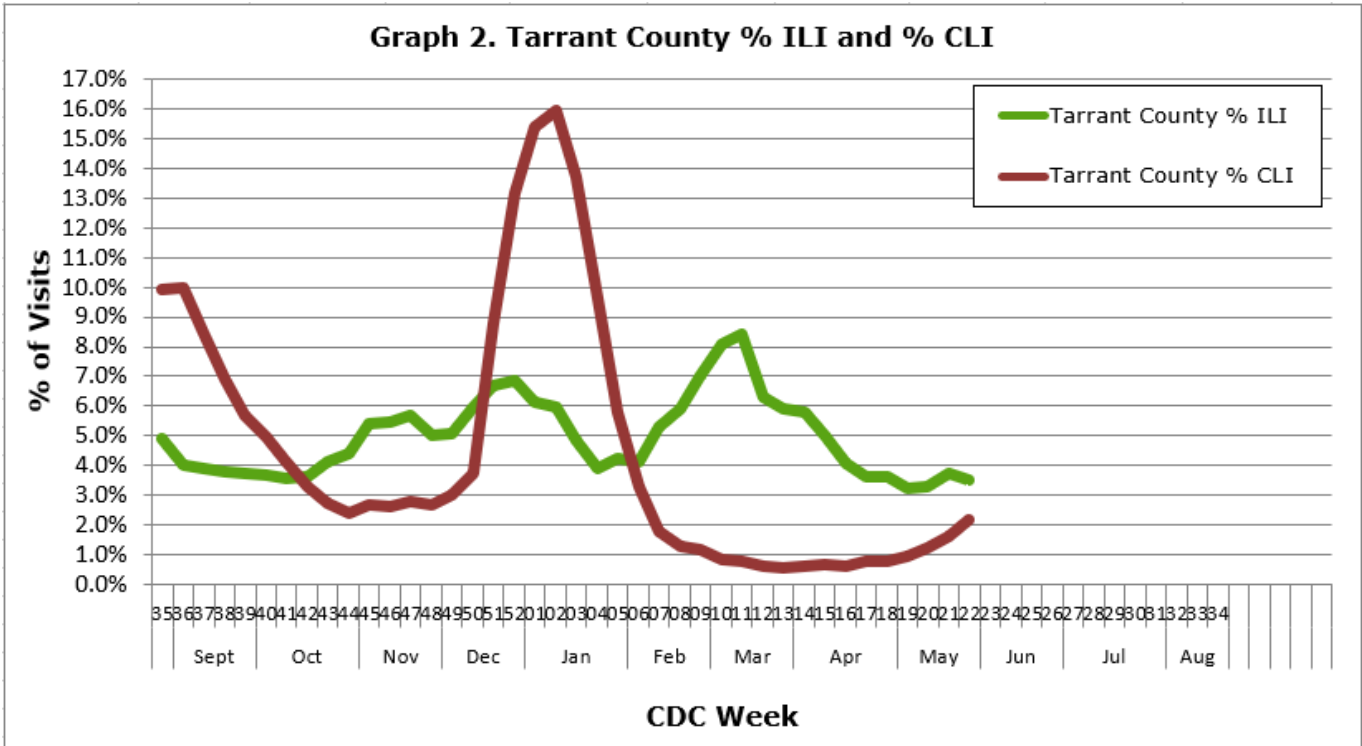


NOTE: The COVID-19 outbreak unfolding in the United States may affect healthcare seeking behavior which in turn would impact ILI data.

Respiratory Virus Activity Summary

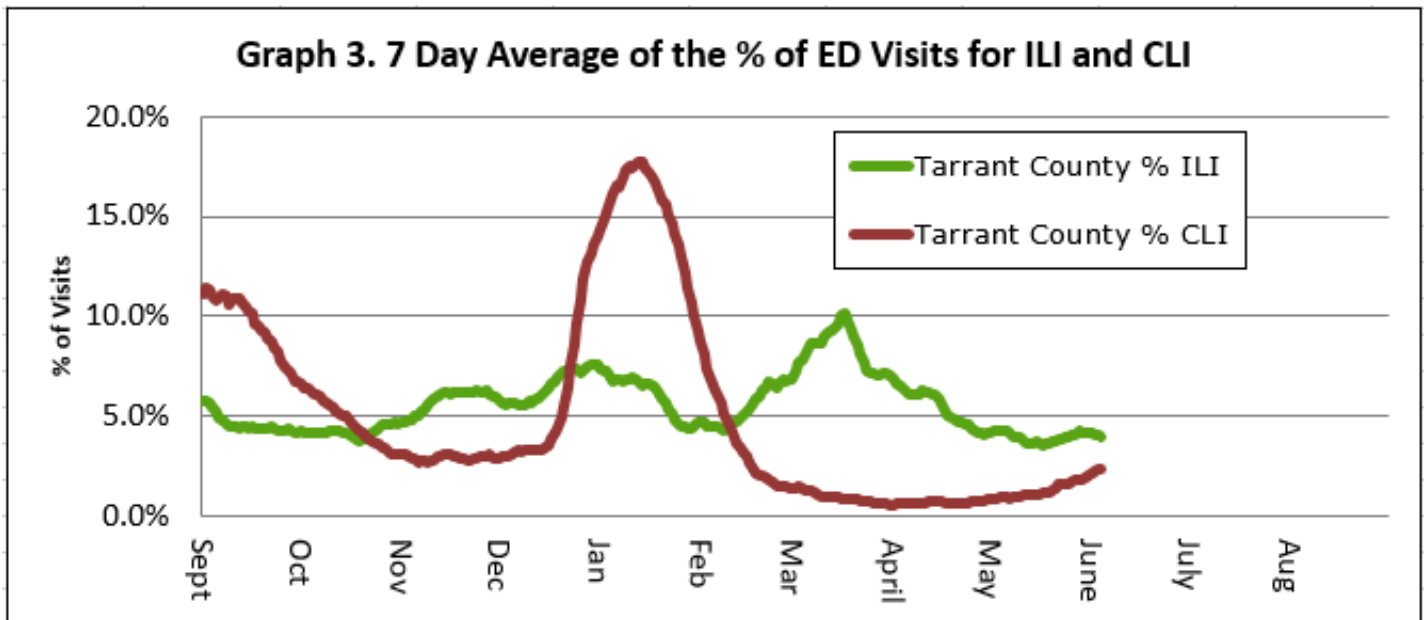
- The percentage of reported influenza-like illness (ILI) in Tarrant County decreased from 3.7% in week 21 to 3.5% in week 22 and is currently above the 2021-2022 Tarrant County baseline (2.4%).
- Due to school closures for summer break, no absenteeism information is available for week 22.
- The percentage of flu test positives in Tarrant County decreased from 2.2% in Week 21 to 1.6% in Week 22.
- Based on data from the Electronic Surveillance System for the Early Notification of Community-based Epidemics, the percentage of patients hospitalized following ER visits who were diagnosed with influenza was 0.1% in week 22.
- During the 2021-2022 influenza season, as of Week 22, 0 Tarrant County influenza-associated pediatric deaths have been reported. As of Week 21, 0 influenza-associated pediatric deaths have been reported in Texas, with a total of 25 reported in the United States for 2021-2022.
- During the 2021-2022 influenza season, 0 influenza outbreaks have been reported in Tarrant County within institutions in Tarrant County.
- Since last report, 24 surveillance specimens were tested. Cumulatively this season, the North Texas Regional Laboratory at Tarrant County Public Health has tested 720 surveillance specimens and of these, 260 have been positive for influenza and 99 have been positive for SARS-CoV-2.
- In Texas during Week 21 the proportion of outpatient visits for ILI, 2.1%, was below the state baseline of 4.6%.
- Nationally during Week 21, 5.7% of specimens tested and reported to the CDC were positive for influenza. The proportion of outpatient visits for ILI (2.3%) was below the national baseline (2.5%). The proportion of deaths in Week 21 attributed to pneumonia, influenza, and COVID-19 from the National Center for Health Statistics (7.8%) was above the epidemic threshold (6.3%).

Influenza Like Illness (ILI) and COVID-19 Like Illness (CLI)



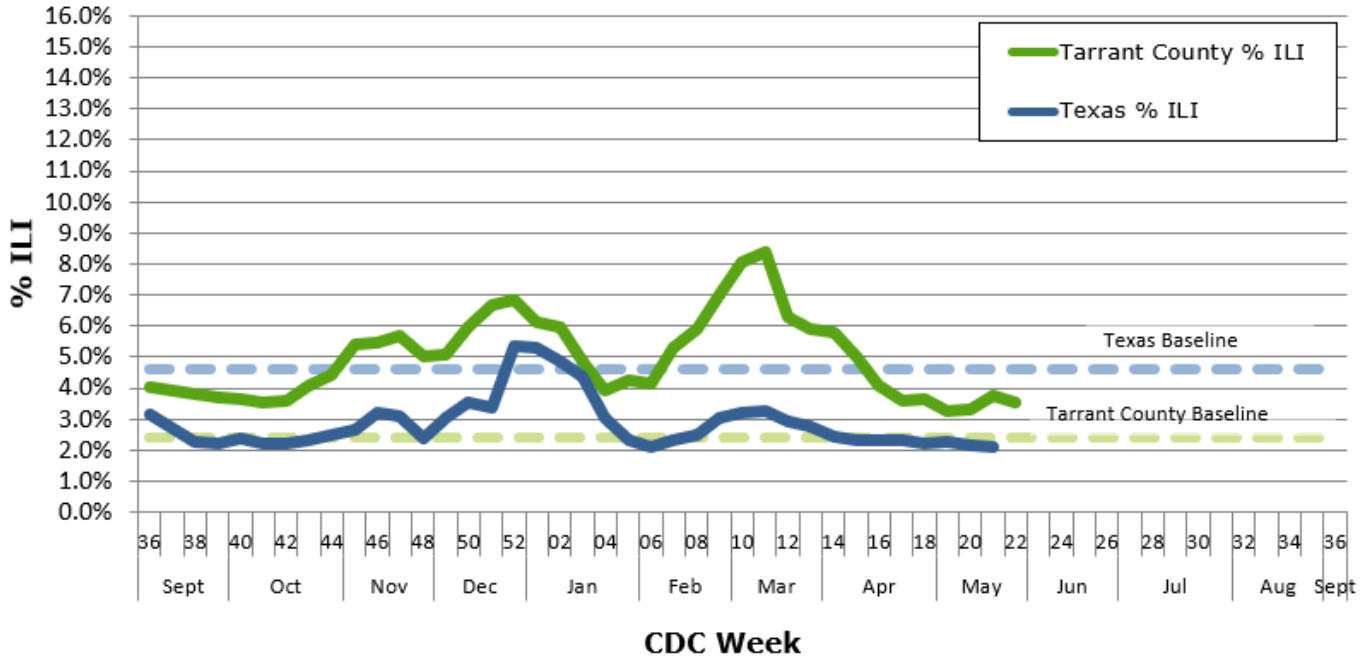
COVID-19-like illness is defined as visits with a mention of Fever AND (Cough OR Shortness of Breath OR Difficulty Breathing) AND NOT (Influenza Diagnosis). These counts do not reflect confirmed diagnosis of COVID-19.

NOTE: Tarrant County ILI and CLI activity are assessed using information available from the Electronic Surveillance System for the Early Notification of Community-based Epidemics (ESSENCE). ILI and CLI visits are determined by identifying key terms and codes within the chief complaint field (i.e. the patients stated reason for visit), and diagnosis code field (i.e. ICD-9-CM and ICD-10-CM codes).



Influenza Like Illness (ILI)

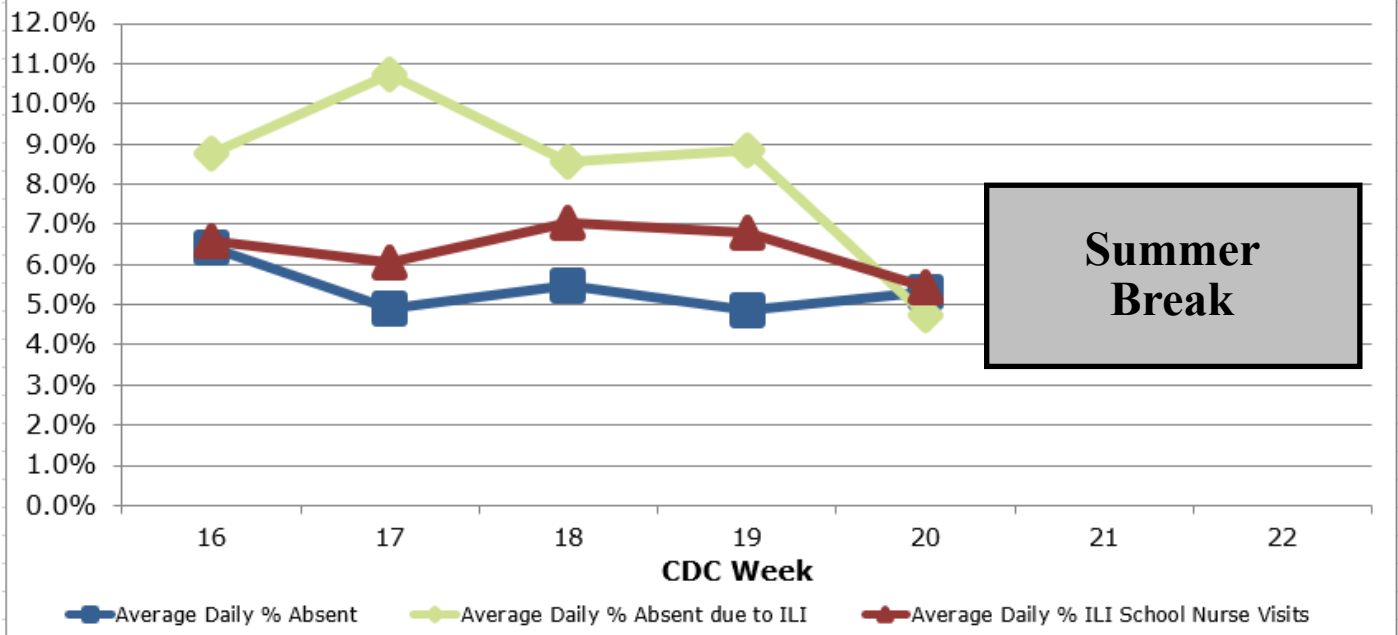
Graph 4. Texas and Tarrant County % ILI



In Week 22, 3.5% of visits to health care providers were due to ILI. ILI levels are currently above the county established baseline of 2.4% and are higher than the state of Texas levels from the week prior.

School Absenteeism and Influenza Test Results

Graph 5. Absenteeism and ILI, Tarrant County



Due to school closures for summer break, no absenteeism information is available for week 22.

Table 1. Influenza Test Results, Tarrant County

CDC Week Number	20	21	22
# Influenza Tests Performed	2273	2521	2495
% Influenza Positive	2.0%	2.2%	1.6%
# Influenza A Positive	36	44	27
% Influenza A Positive	78.3%	78.6%	65.9%
# Influenza B Positive	10	12	14
% Influenza B Positive	21.7%	21.4%	34.2%
# Non-differentiated Positive	0	0	0
% Non-differentiated Positive	0.0%	0.0%	0.0%

NOTE: Tarrant County influenza test results are reported weekly by influenza surveillance participants. For CDC Week 22, rapid influenza test results were reported by 09 hospitals.

Influenza and SARS-CoV-2 Test Results

Table 2. North Texas Regional Laboratory: Respiratory Virus Results¹

	Current Week	2021-2022 Season
Number of Specimens Tested	24	720
Positive Specimens	4 (16.7%)	359 (49.9%)
Influenza A	2 (50.0%)	260 (72.4%)
Influenza A H1	0 (0.0%)	0 (0.0%)
Influenza A H3	2 (50.0%)	258 (99.2%)
Influenza A, Inconclusive subtype	0 (0.0%)	2 (0.8%)
Influenza A, Unsubtypeable ²	0 (0.0%)	0 (0.0%)
Influenza B	0 (0.0%)	0 (0.0%)
Influenza B Yamagata ³	-	-
Influenza B Victoria ³	-	-
Influenza B, Inconclusive	-	-
SARS-CoV-2⁴	2 (50.0%)	99 (27.6%)
Inconclusive⁵	0	0

¹ Laboratory results based on real-time PCR analysis; information is for the 2020-2021 season.

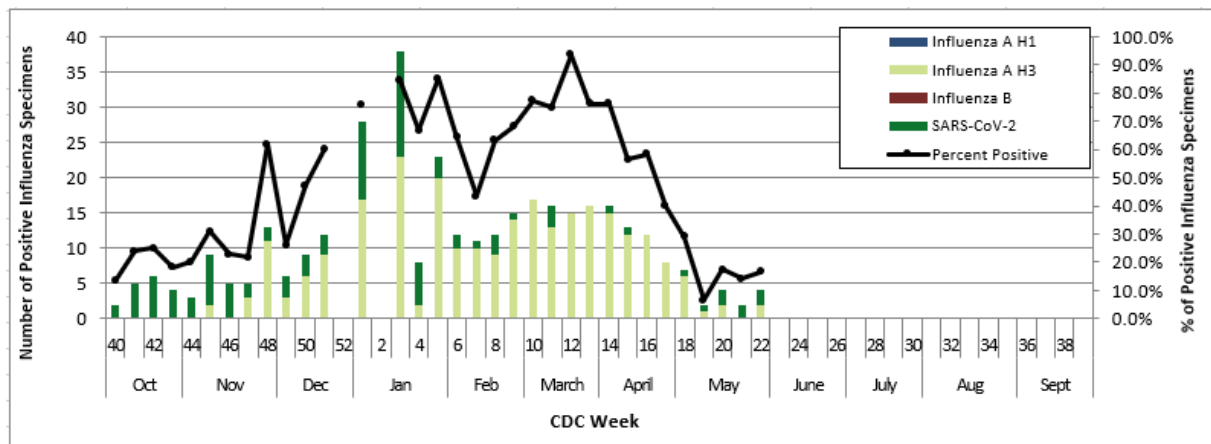
² Influenza A subtype not determined; further analysis pending.

³ Influenza B genotyping is only included in current week column if genotyping occurred in the same week as original PCR testing.

⁴ Specimens that contain influenza co-infections with SARS-CoV-2 are not included in the SARS-CoV-2 positive specimen count.

⁵ Inconclusive for influenza A and influenza B; not included in positive specimens count.

Graph 6. North Texas Regional Laboratory: Influenza and SARS-CoV-2 Virus Results¹

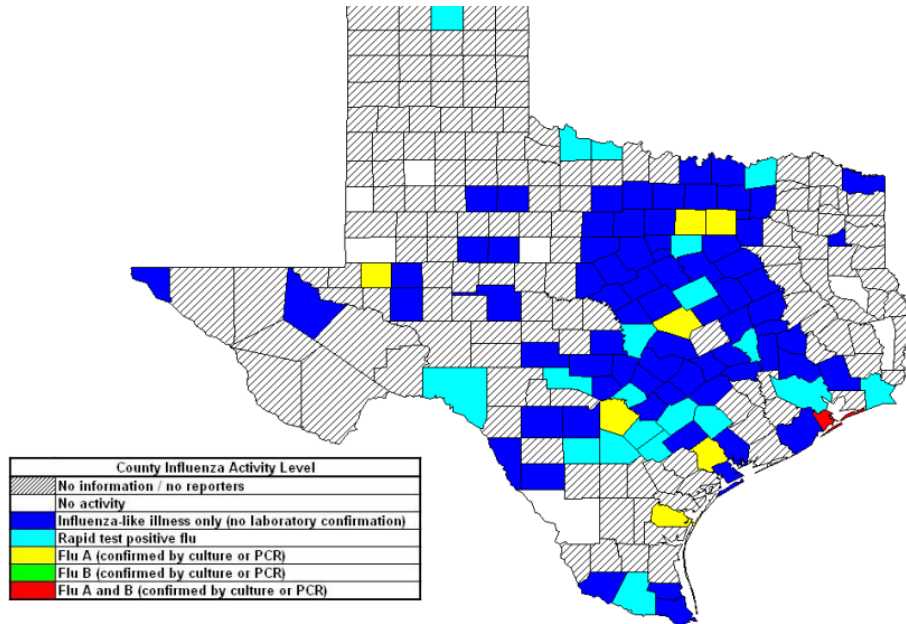


	Current Week	2021-2022 Season
Number of Specimens Tested	19	558
Positive Specimens	9 (47.4%)	409 (73.3%)
Influenza A	2 (22.2%)	204 (49.9%)
Influenza B	0 (0.0%)	0 (0.0%)
SARS-COV-2	1 (11.1%)	55 (13.5%)
Respiratory Syncytial Virus	0 (0.0%)	23 (5.6%)
Adenovirus	1 (11.1%)	16 (3.9%)
Human Metapneumovirus	0 (0.0%)	21 (5.1%)
Parainfluenza-1	0 (0.0%)	0 (0.0%)
Parainfluenza-2	0 (0.0%)	3 (0.7%)
Parainfluenza-3	0 (0.0%)	17 (4.2%)
Rhinovirus	5 (55.6%)	84 (20.5%)
Inconclusive⁴	0 (0.0%)	1 (0.2%)

NOTE: Percentages do not add up to 100% due to co-infections. 46 specimens tested positive with a co-infection: Parainfluenza-3/RSV (1), Rhinovirus/RSV (5), Rhinovirus/Human Metapneumovirus (4), SARS-CoV-2/Adenovirus (1), Rhinovirus/Adenovirus (2), Human Metapneumovirus/Adenovirus (1), SARS-CoV-2/Rhinovirus (2), Parainfluenza-3/Rhinovirus (4), Influenza A/H3/Rhinovirus (12), Adenovirus/Rhinovirus/Human Metapneumovirus (1), SARS-CoV-2/Influenza A/H3 (9), SARS-CoV-2/Adenovirus/Rhinovirus (1), Influenza A/H3/Adenovirus (3), Influenza A/H3/RSV/Rhinovirus (1), Influenza A/H3/Parainfluenza-3 (1)

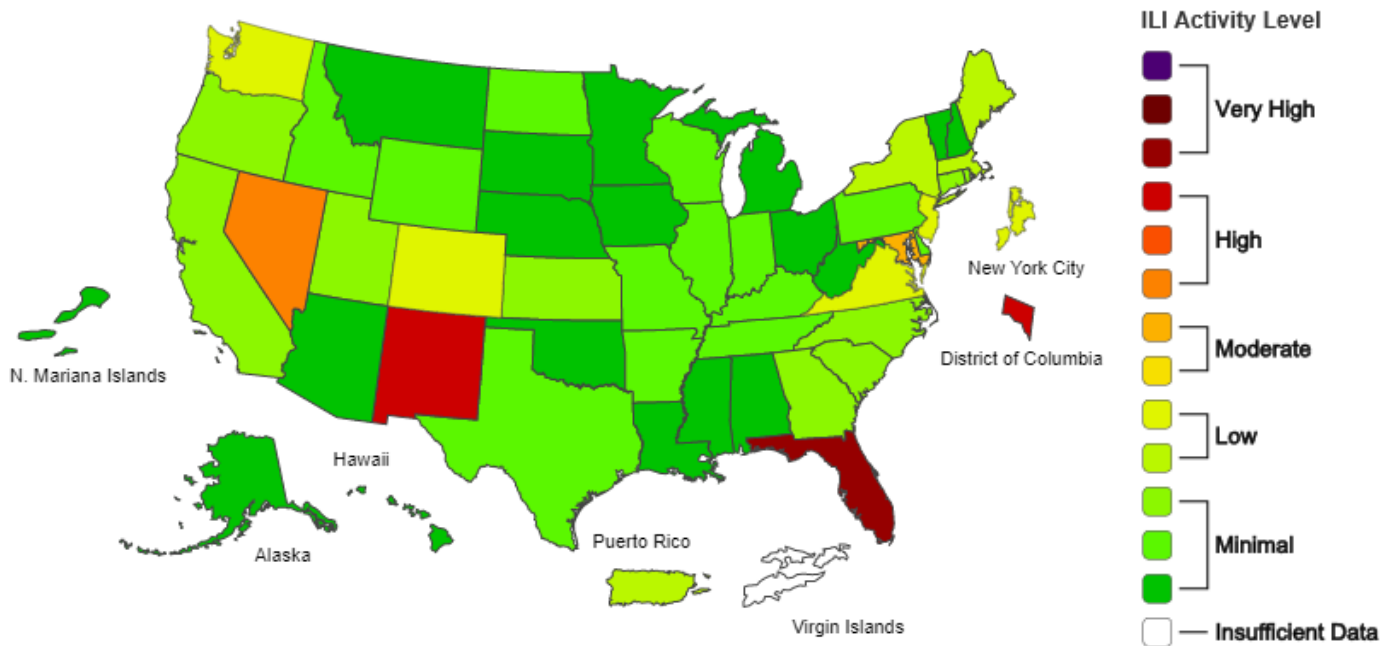
Texas and National Influenza and ILI Activity

Map 1: Texas County Specific Influenza Activity, CDC Week 21



Influenza activity level corresponds to current MMWR week only and does not reflect previous weeks' activity. The majority of influenza cases are not reportable by law to the Texas Department of State Health Services. This map contains data from sentinel sites and does not represent all influenza cases in the state. Positive laboratory results are reported according to specimen collection date or date received in the lab if the former is unknown. <https://www.dshs.texas.gov/IDCU/disease/influenza/surveillance/2020-2021.aspx>

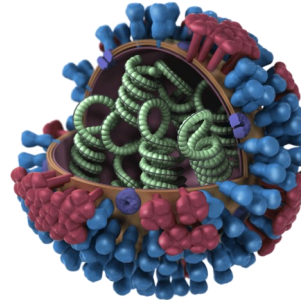
Map 2: ILINet Activity Indicator Map, CDC Week 21



Data collected in ILINet are used to produce a measure of ILI activity by state. Activity levels are based on the percent of outpatient visits in a state due to ILI and are compared to the average percent of ILI visits that occur during spring and fall weeks with little or no influenza virus circulation. This map uses the proportion of outpatient visits to health care providers for influenza-like illness to measure the ILI activity level within a state. It does not, however, measure the extent of geographic spread of flu within a state. Therefore, outbreaks occurring in a single city could cause the state to display high activity levels. Data collected in ILINet may disproportionately represent certain populations within a state, and therefore, may not accurately depict the full picture of influenza activity for the whole state. <http://www.cdc.gov/flu/weekly/>

**Tarrant County Public Health
Influenza Surveillance
Epidemiology and Health Information**

**1101 South Main Street, Suite 2200
Fort Worth, TX 76104**



Veerinder (Vinny) Taneja, MBBS; MPH
Director, Tarrant County Public Health

*The Tarrant County Influenza
Surveillance Weekly Report* is
available on the Tarrant County Public
Health web site at:

flu.tarrantcounty.com

**If you have questions or comments
regarding influenza surveillance,
please contact:**

Nuri Hamby, MPH
Influenza Surveillance Specialist
NJHamby@tarrantcounty.com

NOTE:

Influenza-like Illness (ILI) is defined as fever (temperature $\geq 100^{\circ}\text{F}$) plus a cough OR a sore throat, in the absence of a known cause other than influenza.

Tarrant County reporting quadrants consist of Northwest, Northeast, Southwest and Southeast regions within the boundaries of Interstate 35 and Interstate 30.

Tarrant County ILI baselines were determined using a similar method as the Centers for Disease Control Prevention Regional ILI baselines and Texas Department of State Health Services Texas baseline. Regional ILI baselines are determined by the Centers for Disease Control and Prevention and can be accessed at <http://www.cdc.gov/flu/weekly/overview.htm>

Additional information regarding Tarrant County, Texas and national ILI activity can be accessed at flu.tarrantcounty.com

<https://www.dshs.texas.gov/IDCU/disease/influenza/surveillance/2021-2022.aspx>

<http://www.cdc.gov/flu/weekly/>

Russ Jones, MPH
Division Manager & Chief Epidemiologist
Epidemiology and Health Information
Tarrant County Public Health

**Main Epidemiology Division Number : (817) 321-5350
Disease Reporting Fax Number: (817) 850-2366**