



Heat-Related Illnesses and Deaths, Tarrant County

May 1 – July 7, 2016



Table 1. Heat-related illnesses and deaths, Tarrant County, May 1 – July 7, 2016[†]

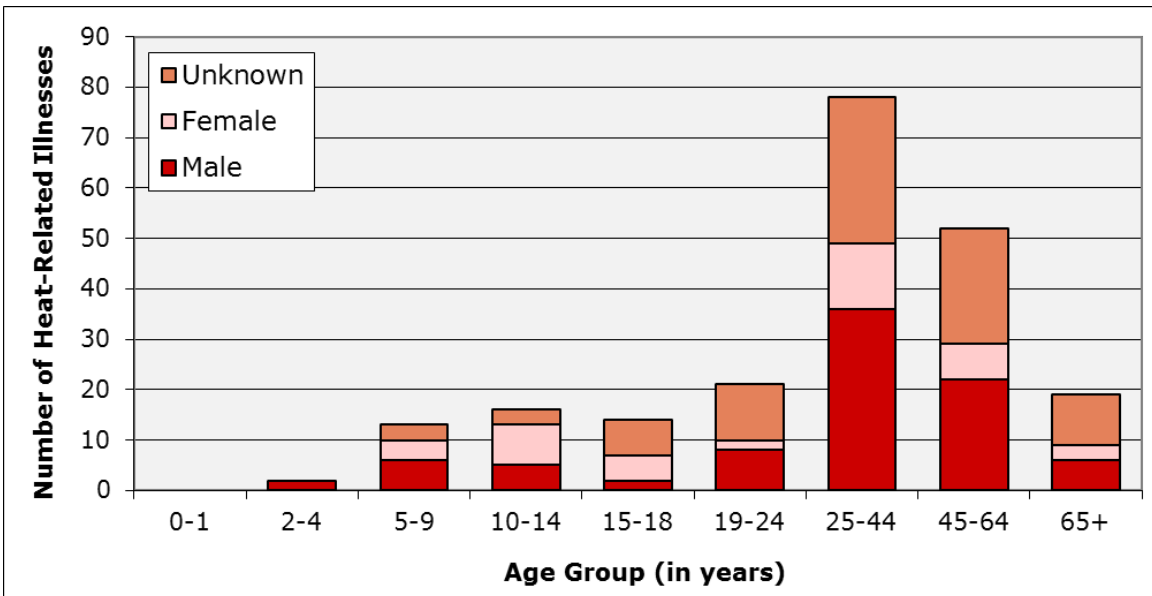
Week Ending	Heat Cramps	Heat Exhaustion	Heat Stroke	Sunburn	Other Heat Related Illness [‡]	Heat Related Death [*]	Total	Percent of Total ED Visits
05/05/16	0	0	0	1	0	0	1	0.01
05/12/16	0	0	0	1	1	0	2	0.01
05/19/16	0	0	0	1	0	0	1	0.01
05/26/16	0	0	1	0	4	0	5	0.03
06/02/16	0	0	1	6	3	0	10	0.06
06/09/16	0	3	1	13	4	0	21	0.12
06/16/16	1	12	1	10	11	0	35	0.20
06/23/16	2	24	4	5	27	0	62	0.36
06/30/16	0	17	1	8	18	0	44	0.26
07/07/16	0	9	1	10	14	0	34	0.21
TOTAL	3	65	10	55	82	0	215	0.13

[†]Data sources: ESSENCE Surveillance (from 46 hospitals that voluntarily provide data based on chief complaints of Tarrant County residents admitted to Emergency Departments in North Central Texas) and other hospital surveillance

[‡]Includes but not limited to heat-related rash, stress, over exposure, and syncope

^{*}Data source: Tarrant County Medical Examiner's Office and hospitals; Data subject to change due to on-going investigations

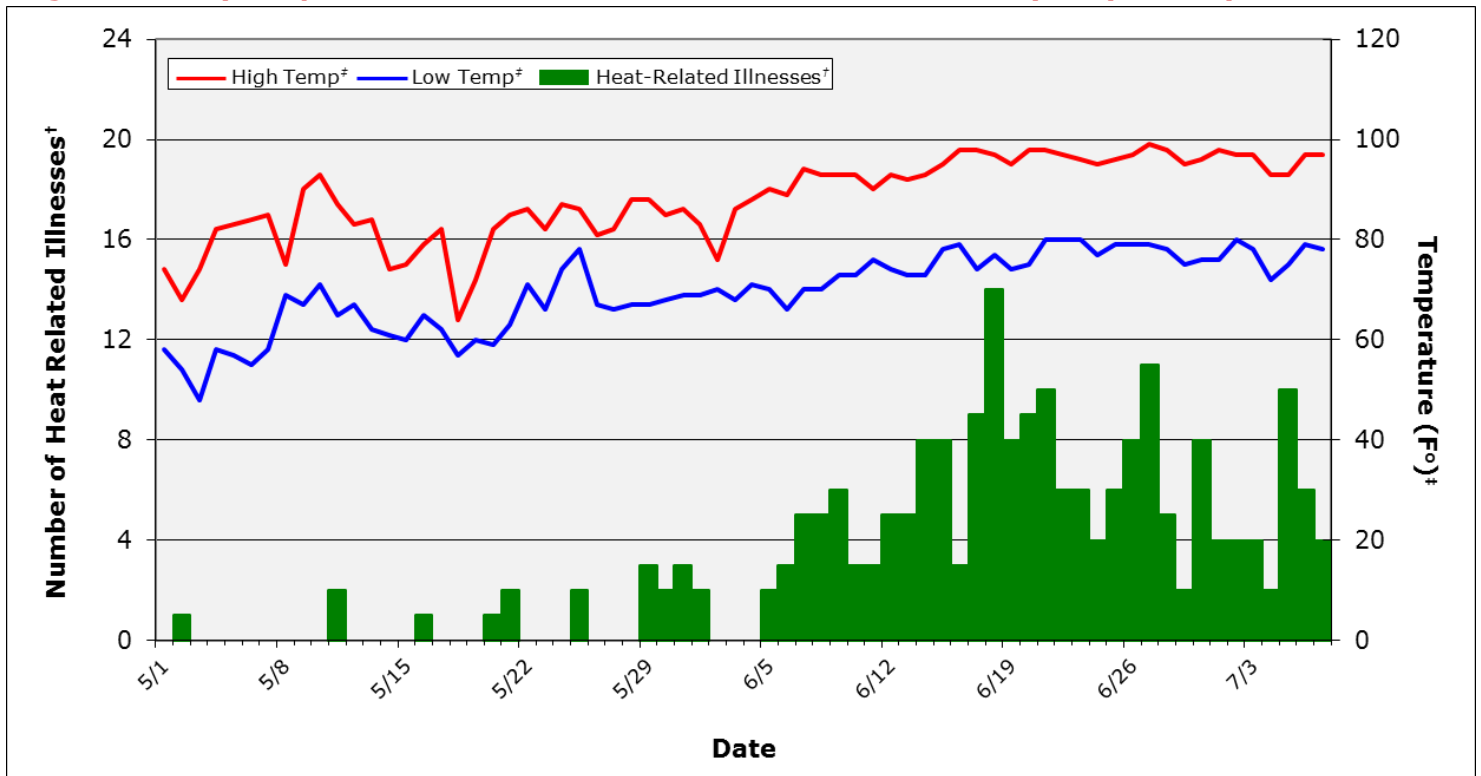
Figure 1. Heat-related illnesses by gender and age group, Tarrant County, May 1 – July 7, 2016[†]



No heat-related deaths have been reported in Tarrant County so far this season.

[†]Data sources: ESSENCE Surveillance (from 46 hospitals that voluntarily provide data based on chief complaints of Tarrant County residents admitted to Emergency Departments in North Central Texas) and other hospital surveillance

Figure 2. Daily temperatures and heat-related illnesses, Tarrant County, May 1 – July 7, 2016

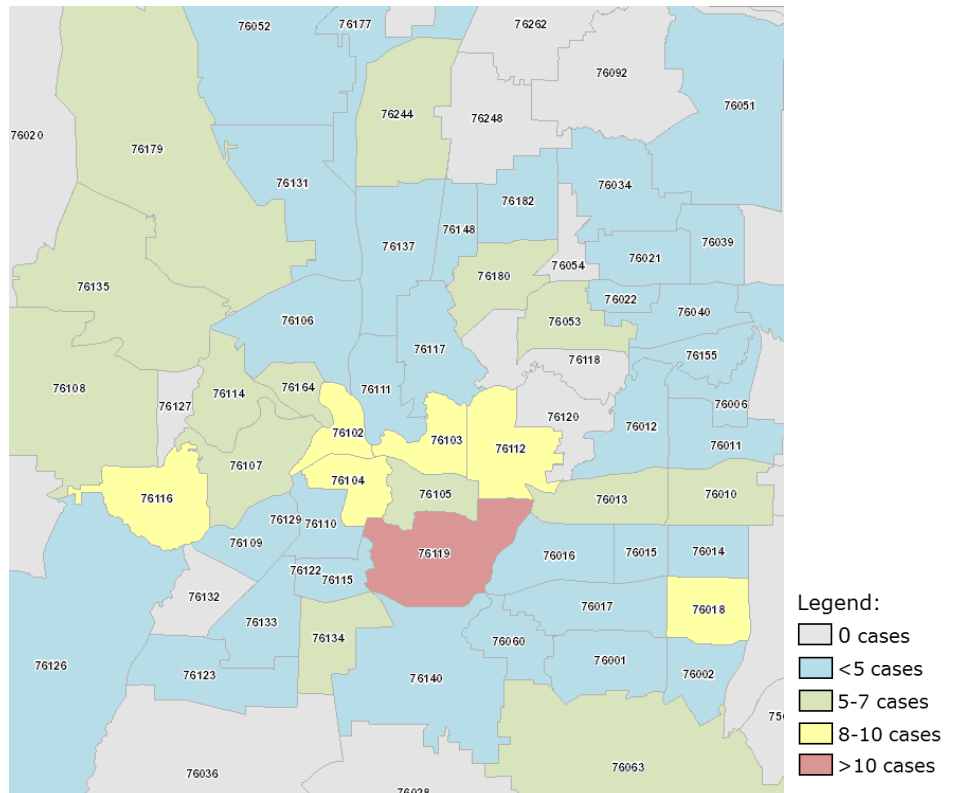


[†]Data sources: ESSENCE Surveillance (from 46 hospitals that voluntarily provide data based on chief complaints of Tarrant County residents admitted to Emergency Departments in North Central Texas) and other hospital surveillance

[‡]Data source: National Weather Services; Temperatures reported at Dallas-Fort Worth International Airport

Table 2 and Figure 3. Heat-related illnesses among ZIP codes with five or more cases, Tarrant County, May 1- July 7, 2016

ZIP Code	Heat-Related Illnesses	Rate
76119	12	28.1
76103	10	68.6
76102	10	123.3
76116	9	19.3
76104	9	51.6
76112	8	20.5
76018	8	29.7
76010	7	12.6
76063	7	11.4
76107	7	27.0
76108	7	18.3
76244	6	9.9
76179	6	12.5
76053	6	21.1
76164	6	35.8
76135	6	29.0
76134	5	21.1
76013	5	16.3
76105	5	22.5
76114	5	20.2
76180	5	15.0



Rate per 100,000 population; Rates based on less than 20 cases are considered unstable and should be interpreted with caution.

Data sources: ESSENCE Surveillance (from 46 hospitals that voluntarily provide data based on chief complaints of Tarrant County residents admitted to Emergency Departments in North Central Texas) and other hospital surveillance

For more information contact the Division of Epidemiology and Health Information at (817) 321-5350

Page 2 of 2