

TARRANT COUNTY PUBLIC HEALTH DATA BRIEF

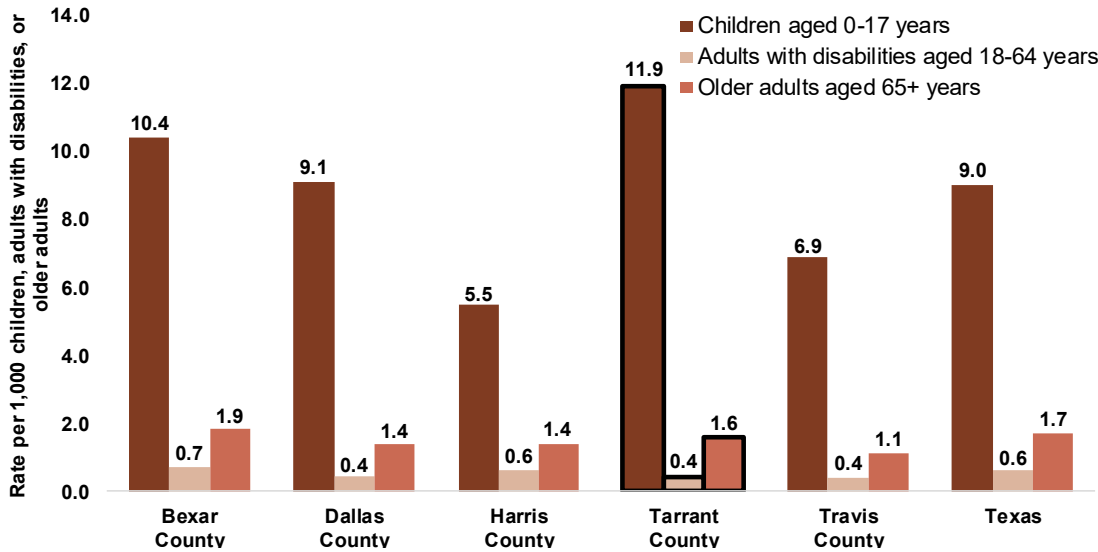


ABUSE AND NEGLECT IN TARRANT COUNTY

Abuse and Neglect

An act or a failure to act that leads to harm or increases the risk of harm. When a child experiences abuse and/or neglect, it is considered an adverse childhood experience (ACE). **Forms of Abuse** – physical, sexual, emotional/psychological, and exploitation (including financial abuse among adults). **Forms of Neglect** – failure to protect from harm, address medical needs, and provide basic needs of living (food, water, shelter, hygiene, clothing, supervision, etc.) excluding financial reasons. *Note: Abuse/neglect of adults with disabilities and older adults is underrepresented due to a lack of standardized definitions, reporting, data, and training/awareness.*

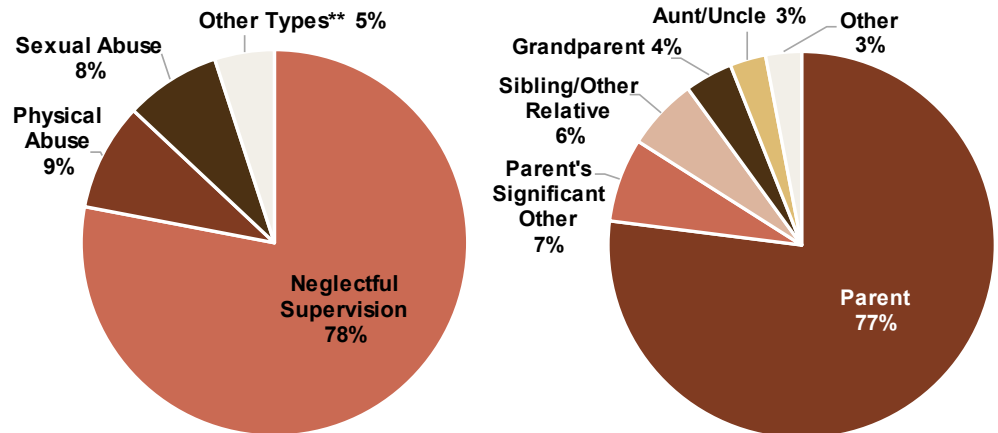
Figure 1. Rates of confirmed/validated victims of abuse/neglect by age group and location, 2021[‡]



**In 2021,
6,511 children
and 3,163
adults were
identified as
victims of
abuse/neglect
in Tarrant
County**

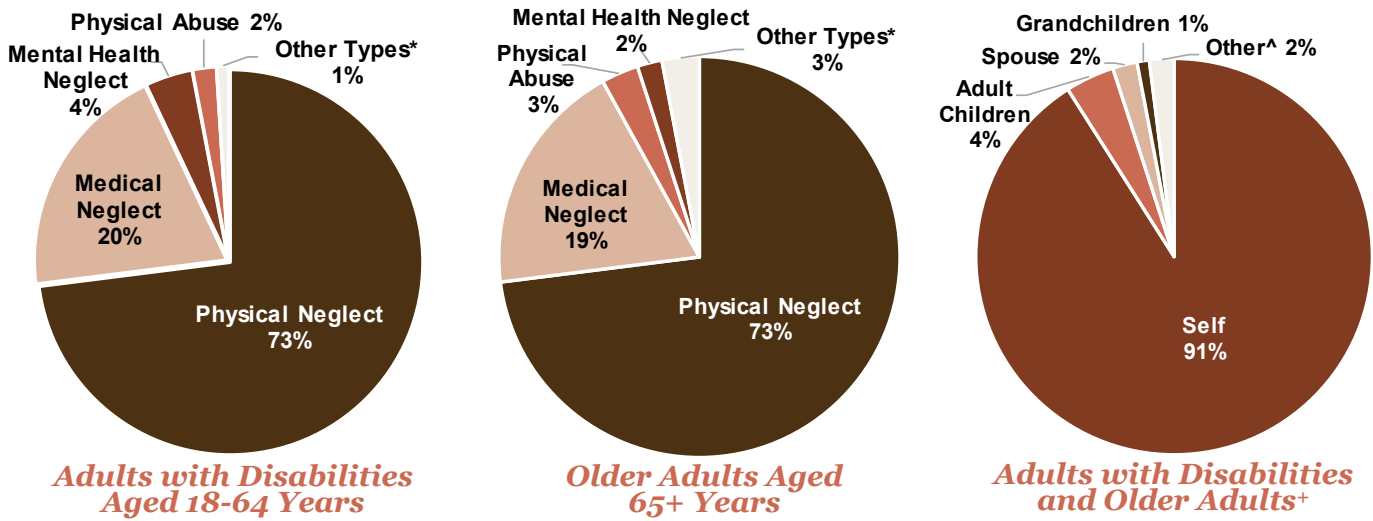
[‡] Victims have been unduplicated by investigation stage. Texas Adult Protective Services (TX APS) definitions: **Disability**- a mental, physical, or developmental disability that substantially impairs the ability to live independently or provide for their own self-care or protection. **Confirmed Victim (child)**- a victim in a completed investigation who is a victim on at least one allegation with a disposition of reason to believe. **Validated Victim (adult)**- based on the standard of preponderance of the evidence, it is more likely than not that the maltreatment occurred.

Figure 2. Forms of abuse/neglect and perpetrator types among confirmed Tarrant County child victims aged 0-17 years, 2021



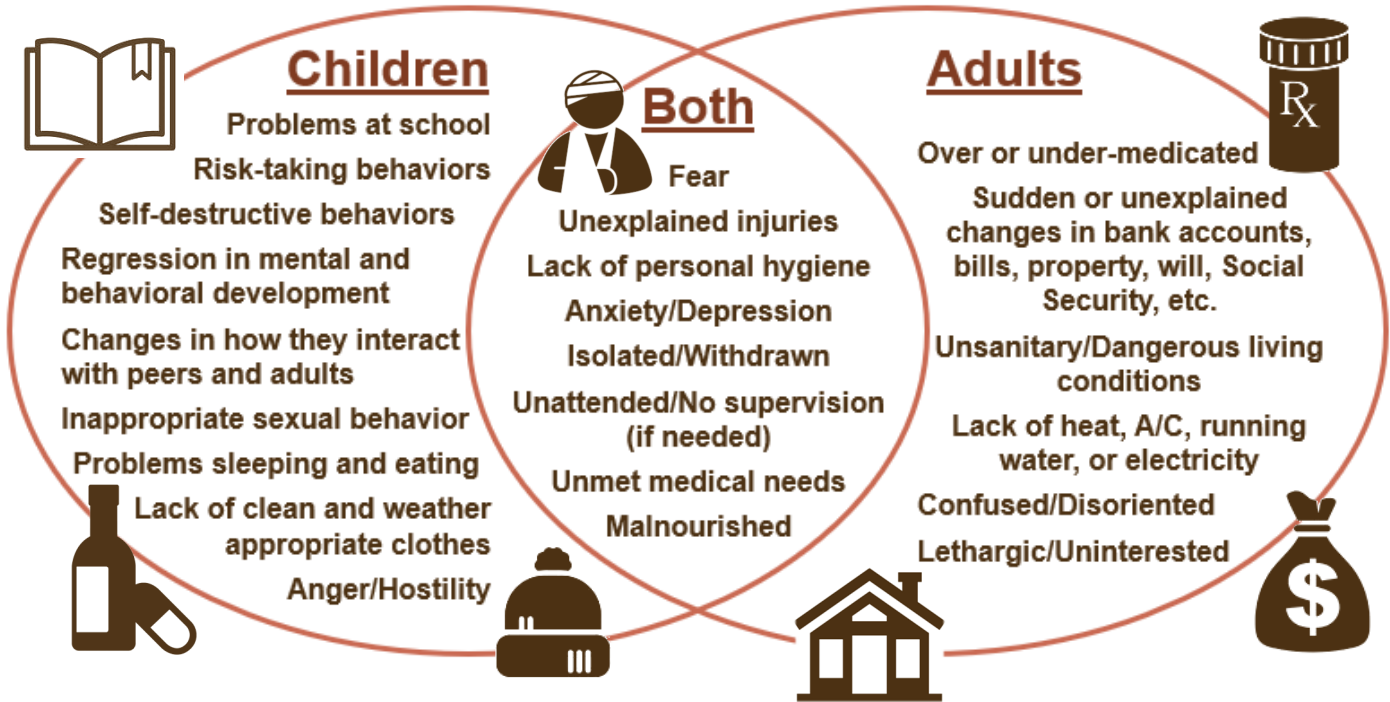
**abandonment, emotional abuse, medical neglect, physical neglect, refusal to accept parental responsibility, and sex trafficking

Figure 3. Forms of abuse/neglect and perpetrator types among validated Tarrant County adult victims aged 18+ years, 2021



* Emotional/verbal abuse, exploitation, and sexual abuse; ^ Facility-institutional staff, friend-neighbor, no relationship, other, other relatives, parents, service provider, sibling, and unknown; + Adults with disabilities and older adults are combined due to data limitations

Signs and Symptoms of Abuse/Neglect



Education and Prevention

Child Abuse/Neglect	Adult Abuse/Neglect
<ul style="list-style-type: none"> [allianceforchildren.org] [cdc.gov/violenceprevention/childabuseandneglect/index.html] [centerforchildrenshealth.org/abuse] [cookchildrens.org/health-resources/safety/Pages/maltreatment-prevention.aspx] [getparentingtips.com] [playitsafe.org/index.php] [shakenbaby.org] 	<ul style="list-style-type: none"> [cdc.gov/violenceprevention/elderabuse/index.html] [dfps.texas.gov/Adult_Protection/default.asp] [endabusepwd.org] [everyonesbusiness.org] [ncea.acl.gov] [specialneedsalliance.org/special-needs-101/additional-resources/]

State/Local Resources and Support

Texas Abuse/Neglect Hotline:
Call 1-800-252-5400
[txabusehotline.org]

Aging & Disability Resource Center Call 1-855-937-2372 [tarrantcountypadrc.org]	Tarrant County Elder Financial Fraud Unit Call 817-884-1400
MHMR of Tarrant County Call/Text 1-800-866-2465 TTY 817-569-4488 [mhmrarrant.org]	Financial Exploitation Prevention Center of Tarrant County Call 817-720-6556