

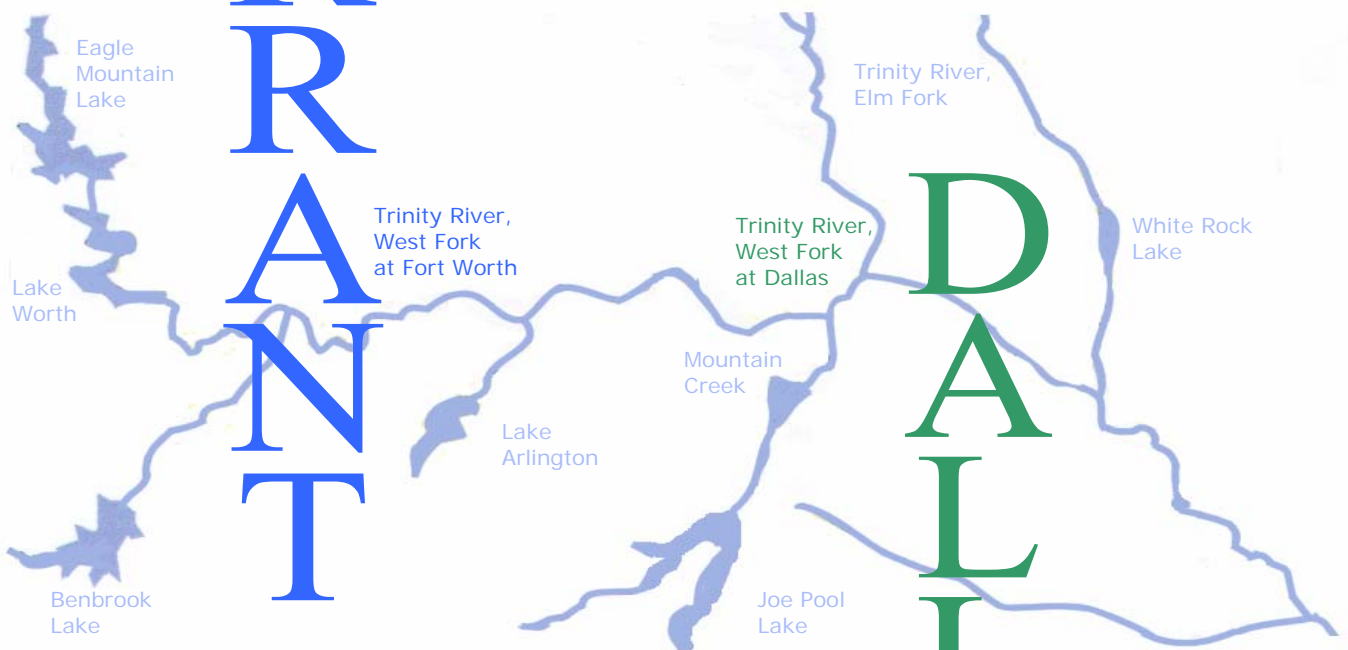
T
DALLAS

R
R

A
N
T

D
A
L
L

TARRANT
S



**A Comparative Analysis of
Dallas County and Tarrant County
Behavioral Risk Factor Surveillance Survey Results**

December 2006

Preface

In 1998, Tarrant County Public Health and Parkland Health & Hospital System undertook simultaneous Behavioral Risk Factor Surveillance System (BRFSS) surveys in Dallas and Tarrant Counties using the same BRFSS instruments during the same time period, enabling direct comparisons. In 2004, both counties wanted to repeat this effort, but with larger samples that could be analyzed by sub-areas of each county. The success of this effort has been dependent on collaboration with numerous stakeholders in each county as well as substantial financial contributions.

The **Dallas County** study was a collaborative effort of numerous Dallas-Fort Worth Hospitals, The Dallas Fort Worth Hospital Council Data Committee and the Foundation for Community Empowerment.

Supporters of this study included:

Dallas Fort Worth Hospital Council
Parkland Health & Hospital System
Presbyterian Hospital Dallas
Baylor University Medical Center
Methodist Health Systems
The Foundation for Community Empowerment

The **Tarrant County** study was a collaborative effort which included Tarrant County Public Health, Tarrant County Hospital District, Harris Methodist Hospital, Tarrant County MHMR and Parkland Health & Hospital System and the Foundation for Community Empowerment in Dallas County.

Supporters of this study included:

Tarrant County Public Health
Tarrant County Mental Health Mental Retardation
United Way of Metropolitan Tarrant County

**A Comparative Analysis of
Dallas County and Tarrant County BRFSS Results**

December 2006
Tarrant County Public Health and Parkland Health & Hospital System

PREPARED BY

Brad Walsh, MPH
Senior Strategic Planner, Strategic Planning and Population Medicine,
Parkland Health and Hospital System

Adeola Jaiyeola, MD, DOHS, MHSc
Research Epidemiologist, Epidemiology and Health Information,
Tarrant County Public Health

Anita Kurian, DrPH, MBBS
Division Manager, Epidemiology and Health Information,
Tarrant County Public Health

ACKNOWLEDGEMENTS

Sue Pickens, M.Ed.
Director Strategic Planning and Population Medicine
Parkland Health and Hospital System

Carol Lee Hamilton, JD, MPA
Associate Director, Prevention and Public Health Practice
Tarrant County Public Health

Kathryn J. Dolan, Ph.D.
Health Planner and Health Intelligence Center Director
Tarrant County Public Health

Table of Contents

| | |
|---|----|
| Introduction | 4 |
| Methods | 4 |
| Results | 4 |
| Poor or Fair Health Status | 5 |
| Health Coverage | 6 |
| Could Not See a Doctor in the Past 12 Months | 7 |
| No Physical Activity in the Past 30 Days..... | 8 |
| Diabetes | 9 |
| Current Asthma | 10 |
| Cardiovascular Health | 11 |
| Fruit and Vegetable Consumption | 11 |
| Cigarette Smoking..... | 11 |
| Obesity..... | 12 |
| Cancer Screening | 12 |
| Adult Vaccination | 13 |
| Living in a Home With a Loaded and Unlocked Firearm | 13 |
| Discussion and Conclusion..... | 14 |
| Table 1: General Health Status..... | 16 |
| Table 1-1: General Health States – TX, US, HP 2010 | 16 |
| Table 2: Health Care Coverage..... | 17 |
| Table 2-1: Health Care Coverage – TX, US, HP 2010 | 17 |
| Table 3: Medical Cost..... | 18 |
| Table 3-1: Medical Cost – TX, US, HP 2010 | 18 |
| Table 4: No Physical Activity | 19 |
| Table 4-1: No Physical Activity | 19 |
| Table 5: Diabetes..... | 20 |
| Table 5-1: Diabetes | 20 |
| Table 6: Current Asthma | 21 |
| Table 6-1: Current Asthma – TX, US, HP 2010 | 21 |
| Table 7: Hypertension..... | 22 |
| Table 7-1: Hypertension – TX, US, HP 2010 | 22 |
| Table 8: Heart Attack..... | 23 |

| | | |
|-------------|---|----|
| Table 8-1 | Heart Attack – TX, US, HP 2010 | 23 |
| Table 9: | Stroke | 24 |
| Table 9-1: | Stroke – TX, US, HP 2010 | 24 |
| Table 10: | Fruit and Vegetable Consumption | 25 |
| Table 10-1: | Fruit and Vegetable Consumption – TX, US, HP 2010 | 25 |
| Table 11: | Current Smoking | 26 |
| Table 11-1: | Current Smoking – TX, US, HP 2010 | 26 |
| Table 12: | Obesity | 27 |
| Table 12-1: | Obesity – TX, US, HP 2010 | 27 |
| Table 13: | Clinical Breast Exam | 28 |
| Table 14: | Mammograms | 29 |
| Table 14-1: | Mammograms – TX, US, HP 2010 | 29 |
| Table 15: | Cervical Cancer Screening | 30 |
| Table 15-1: | Cervical Cancer Screening – TX, US, HP 2010 | 30 |
| Table 16: | Colon Cancer Screening | 31 |
| Table 16-1: | Colon Cancer Screening – TX, US, HP 2010 | 31 |
| Table 17: | Blood Stool Test | 32 |
| Table 17-1: | Blood Stool Test – TX, US, HP 2010 | 32 |
| Table 18: | Prostate Cancer Screening | 33 |
| Table 18-1: | Prostate Cancer Screening – TX, US, HP 2010 | 33 |
| Table 19: | Influenza Vaccination | 34 |
| Table 19-1: | Influenza Vaccination – TX, US, HP 2010 | 34 |
| Table 20: | Pneumococcal Vaccination | 35 |
| Table 20-1: | Pneumococcal Vaccination – TX, US, HP 2010 | 35 |
| Table 21: | Loaded and Unlocked Firearm | 36 |
| References | | 37 |

Introduction

Dallas County and Tarrant County are two adjacent counties located in North Central Texas. They make up the urban core of the 12-county Dallas-Fort Worth Consolidated Metropolitan Service Area (CMSA). The 2006 estimated populations of Dallas and Tarrant Counties are 2,383,300 and 1,702,250, respectively.

Although the Texas Department of State Health Services (DSHS) conducts Behavioral Risk Factor Surveillance System (BRFSS) surveys annually, these do not sample enough residents of individual counties to provide useful statistics at the county or sub-county level for a single year. Tarrant County Public Health conducted a BRFSS county level survey in Tarrant County from September to November, 2004, and a coalition of agencies conducted a BRFSS county level survey in Dallas County from June to November, 2005. Both counties' surveys were contracted to the same external consultant (Clearwater, Inc.) used by the DSHS. Clearwater used the same Centers for Disease Control and Prevention (CDC) BRFSS questionnaires and sampling methodology they use when conducting the state of Texas BRFSS survey. While the Tarrant County questionnaire included the 2004 BRFSS Core, 2004 optional modules, several Texas BRFSS state-added sections, and the 2003 Core section 7 on Fruit and Vegetables, the Dallas County questionnaire included the 2004 BRFSS Core, 2004 and 2005 Optional Modules, several Texas state-added sections, and the 2005 Core Section 17 on Fruits and Vegetables. The Tarrant County BRFSS data were analyzed by Tarrant County Public Health staff, and the Dallas County BRFSS data were analyzed by the staff of the Department of Strategic Planning of Parkland Health and Hospital System. Both organizations used SPSS 14.0 with complex samples procedures. In this report we compare findings from the two counties' BRFSS studies.

Methods

For this comparative analysis of Tarrant and Dallas County BRFSS results, specific survey questions were chosen for a focused assessment of similarities and differences between the results for the two counties. The overall prevalence rate and 95% Confidence Interval for each variable were compared, followed by a side-by-side comparison of the distribution of each variable by gender, age, race/ethnicity, education, income and employment to identify significant differences and explore possible reasons for any observed differences. The 95% Confidence Interval is used as a likely measure of statistical significance in instances where they are non-overlapping.

Results

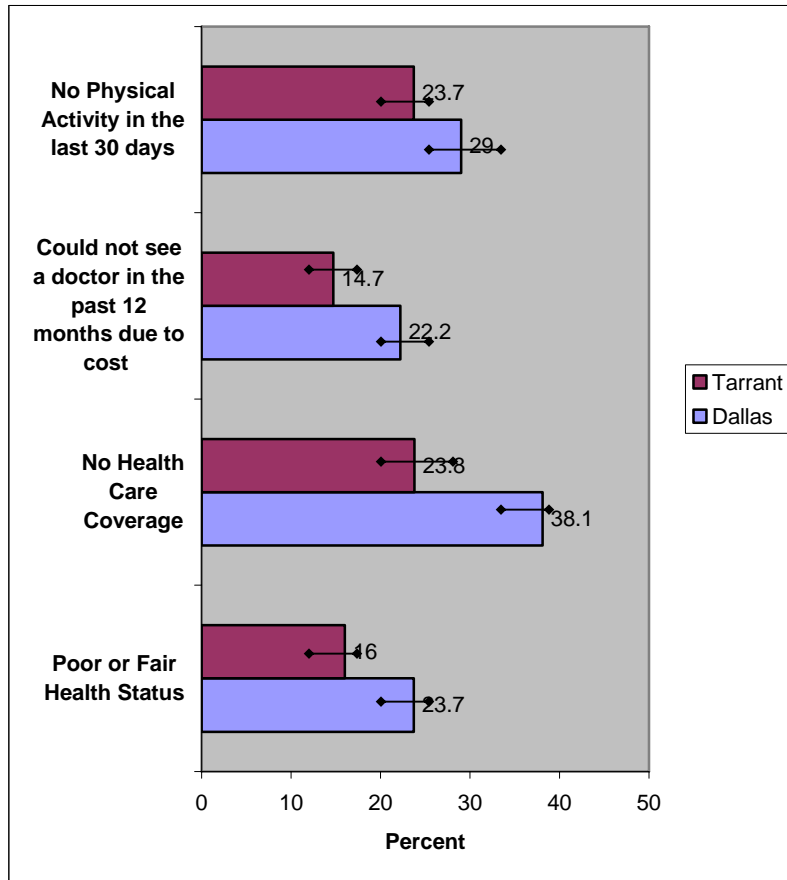
The majority (80%) of the 21 variables selected for comparisons showed no significant differences between Dallas and Tarrant County residents. The prevalence rates for four of the selected variables, however, showed significantly fewer Tarrant County residents were at risk than Dallas County residents.

Figure 1 is a graphic comparison of the prevalence rates and 95% Confidence Intervals for those variables found to be significantly different between both counties. These include:

- Poor or fair health status
- No health care coverage

- Could not see a doctor in the last 30 days due to cost
- No physical activity in the last 30 days

Figure 1.
Prevalence Rates with Significant Differences between
Dallas and Tarrant Counties, BRFSS 2004-2005



◆◆◆◆◆ Represents 95% Confidence Interval

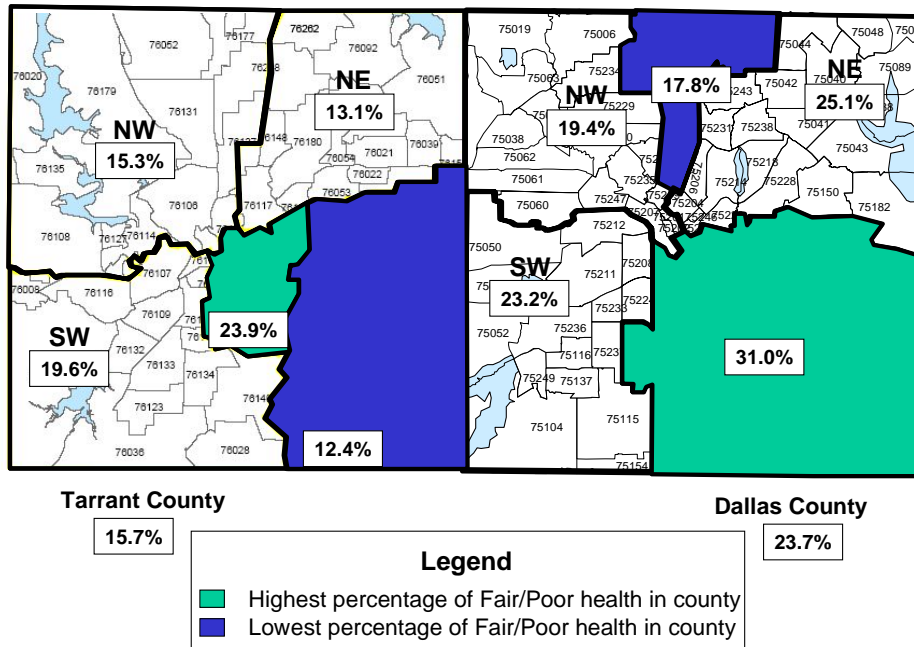
Poor or Fair General Health Status

Health-related quality of life (HRQoL) has become increasingly recognized as an outcome measure in clinical trials, effectiveness research, and research on quality of clinical care (Leplege, Wilson, Gill, Pope). Self-rated general health status is one of the core components of the BRFSS questionnaire each year. Respondents are asked to rate their general health status on a 5-point scale, from “excellent” to “poor.”

Significantly more residents of Dallas County (23.7%) reported poor or fair health status than Tarrant County residents (16.0%) (Figure 1). Table 1 provides a comparison of demographic groups between Dallas and Tarrant Counties and shows significant differences in gender, age groups, income groups, and employment. Females in Dallas County (27.7%) were more likely to report fair or poor health status than females in Tarrant County (16.6%). Persons aged 25-34 and 45-54 in

Dallas County (18.4% and 30.0%, respectively) were more likely to report fair or poor health status than in Tarrant County (9.6% and 15.9%, respectively). Residents in Dallas County with an income of \$15,000-\$24,999 (DC-38.4% vs. TC-26.0%) and \$50,000 and over (DC-12.0% vs. TC-5.7%) were more likely to report fair or poor health status than those in Tarrant County. Residents who were employed, self-employed, or homemakers in Dallas County were more likely to report fair or poor health status than in Tarrant County. Tarrant County had a lower percentage of people rating their health fair or poor than the state of Texas (TC-16.0% vs. TX-19.8%), but higher a higher percentage than the United States (US-14.8%). The percentage in Dallas County was higher than both Texas and the United States (Table 1-1). Figure 2 illustrates the geographic distribution of respondents reporting fair or poor health status in Tarrant and Dallas counties.

Figure 2.
Percent That Rated Their Current Health Status
“Fair” or “Poor”



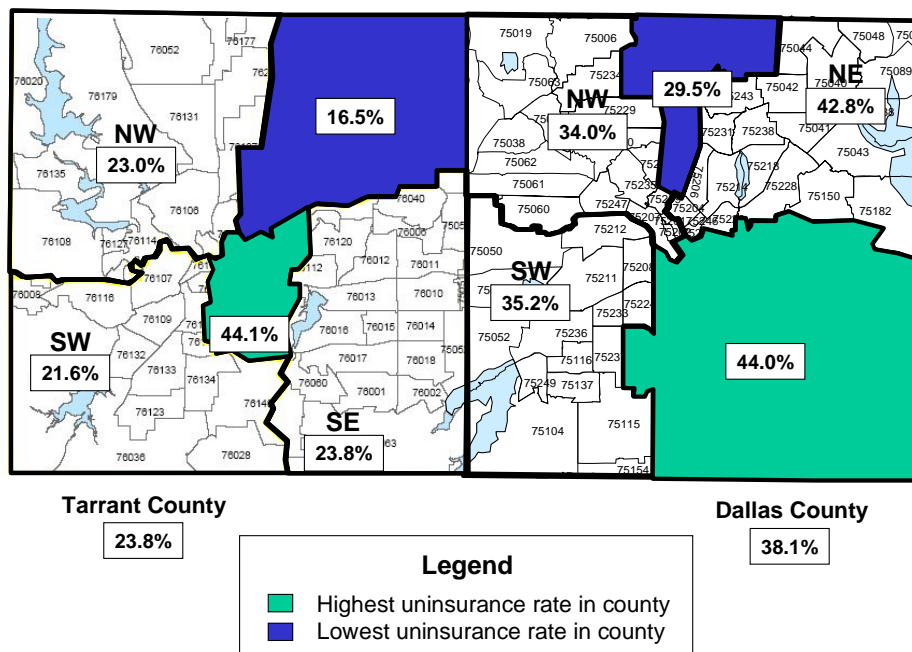
Health Coverage

Access to health services – including preventive care, primary care, and hospitalization – often depends on whether a person has health insurance to help defray costs. Uninsured people are less than half as likely as people with health insurance to have a primary care provider; to have received appropriate preventive care, such as recent mammograms or Pap tests; or to have had any recent medical visits. Evidence suggests that for poor patients nationwide, a lack of insurance over an extended period significantly increases the risk of premature death (USDHHS, *Healthy People 2010*, p. 1-14).

Significantly more residents of Dallas County (38.1%) reported having no health insurance coverage than residents of Tarrant County (23.8%) (Figure 1). Also, Dallas County had a higher percentage of uninsured than the state of Texas (28.5%

in 2005) and the United States (14.5% in 2005). Tarrant County had a higher percentage of uninsured than the United States, but a lower percentage than Texas (Table 2-1). Health insurance coverage included any type of health insurance, prepaid medical plans such as HMOs, or government plans such as Medicare. A comparison of demographic groups between Dallas and Tarrant Counties demonstrated significant differences between the county prevalence for both genders, ages 25-54, Hispanics, income group \$15,000 to \$24,999, people who report educational levels of 12th grade or GED and some college, and among people who list their employment status as employed or homemakers (Table 2). While uninsured percentages for Hispanics were over 50% in both counties, the significant differences between the counties on these demographic parameters suggest that working poor Hispanics in Dallas County are even more likely to be uninsured than those in Tarrant County. Figure 3 illustrates the geographic distribution of people with no health insurance in Tarrant and Dallas Counties.

Figure 3.
Percent That Have No Healthcare Coverage



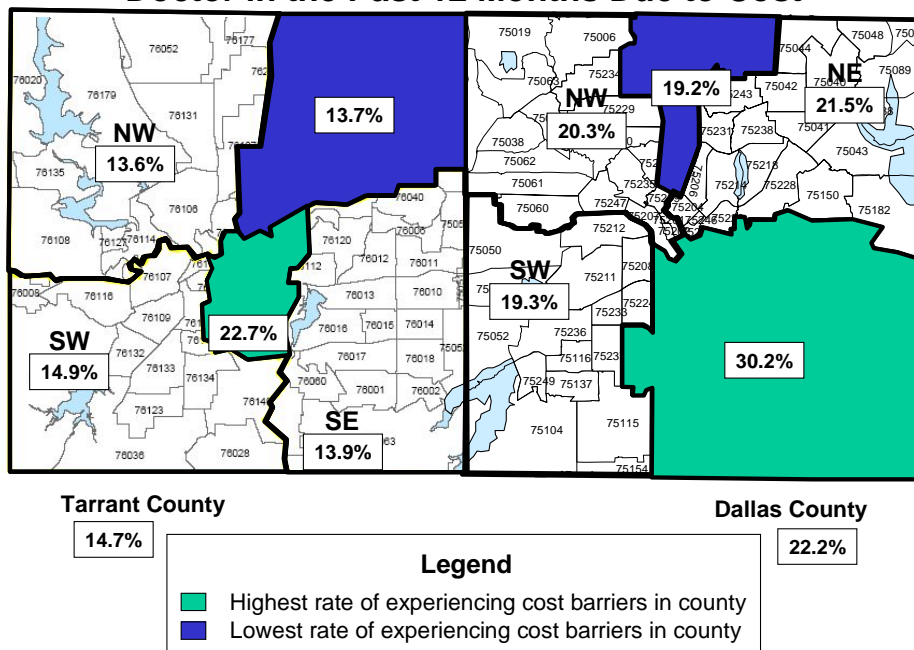
Could Not See a Doctor in the Past 12 months

Respondents were asked whether or not there was a time in the past 12 months when they needed to see a doctor, but could not due to costs. Financial delays to needed care could be a result of lack of insurance, high deductibles, inadequate personal savings for people who pay for care entirely out-of-pocket, unanticipated price increases that exceeded financial expectations, or other factors (USDHHS, *Healthy People 2010*, p. 1-23).

A significantly higher percentage of Dallas County residents (22.2%) than Tarrant County residents (14.7%) reported that when they needed a doctor, they could not see one in the past 12 months because of cost. Table 3 shows significant differences

between the counties among both genders, age groups 18-24 and 45-54, people reporting educational level of 12th grade or GED, and among those who list their occupation as student. In Dallas County, almost twice as many residents age 18-24 and more than five times as many students reported cost barriers to medical access. The percentage of residents in Dallas County who could not see a doctor in the past 12 months because of cost was higher than both Texas (19.1% in 2005) and the United States (13.6% in 2005); while, the percentage in Tarrant County was lower than Texas, but higher than the United States (Table 3-1). Figure 3 illustrates the geographic distribution of people reporting they could not see a doctor due to cost in the past 12 months.

Figure 3.
Percent That Needed To But Could Not See a Doctor in the Past 12 Months Due to Cost



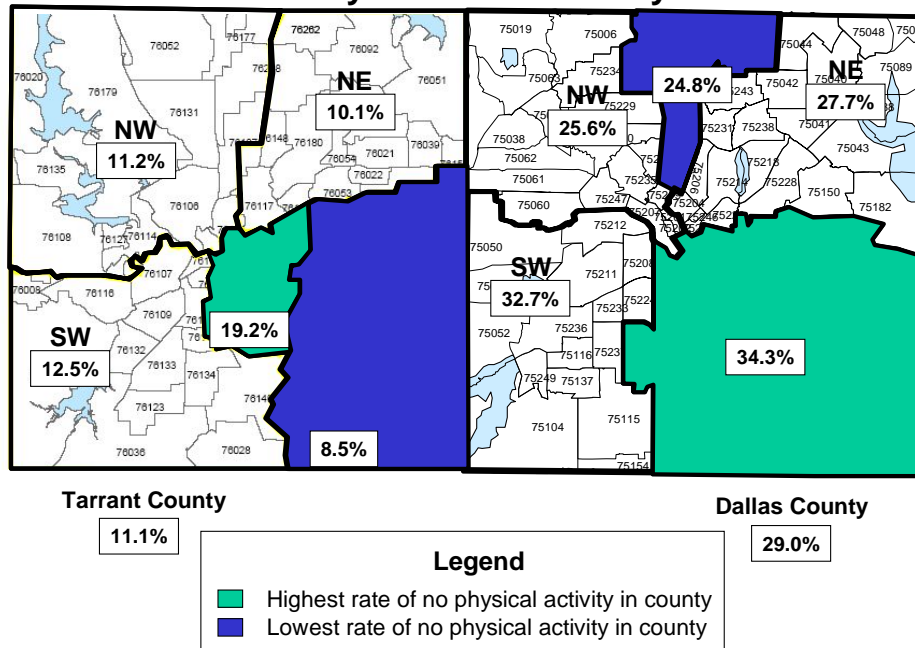
No Physical Activity in the Past 30 Days

Research supports the findings that regular physical activity reduces the risk of premature death; reduces the risk of death due to heart disease; reduces the risk of developing diabetes, high blood pressure and colon cancer; reduces blood pressure in people who already have high blood pressure; reduces feelings of depression and anxiety, and promotes psychological well-being; helps control weight, builds and maintains healthy bones, muscles and joints; and helps older adults become stronger and better able to move about without falling (USDHHS, *Physical Activity and Health*).

A significantly higher percentage of Dallas County residents (29.0%) reported no physical activity in the past 30 days compared to Tarrant County residents (23.7%) (Figure 4). A comparison of the demographic distributions in Table 4, however, demonstrates that the only demographic group whose prevalence differed significantly between the counties is those who are employed (DC-28.0% vs.

TC-20.1%) (Table 6). The percentage in Dallas County was higher than both Texas (27.4% in 2005) and the United States (23.8% in 2005). The percentage in Tarrant County, however, was lower than Texas and comparable to the United States (Table 4-1). Figure 4 illustrates the geographic distribution of those reporting no physical activity outside of their work during the past 30 days.

Figure 4.
Percent That Took Part in No Physical Activity in the Past 30 Days



Diabetes

Diabetes poses a significant public health challenge for the nation and for north Texas. Over 1.3 million new cases are diagnosed each year, or 3,500 per day (USDHHS, *National Diabetes Fact Sheet*, p. 6). Nationally, the prevalence of diagnosed diabetes among adults has more than doubled over the past 20 years, from 5.8 million cases in 1980 to 14.7 million cases in 2004 (USDHHS, CDC web site, <http://www.cdc.gov/diabetes/statistics/prev/national/figpersons.htm>). Diabetes increases the risk of cardiovascular disease, and the direct complications of diabetes—blindness, lower limb amputation and end-stage kidney failure—increase as the prevalence of diabetes increases (USDHHS, *National Diabetes Fact Sheet*, p. 7-8).

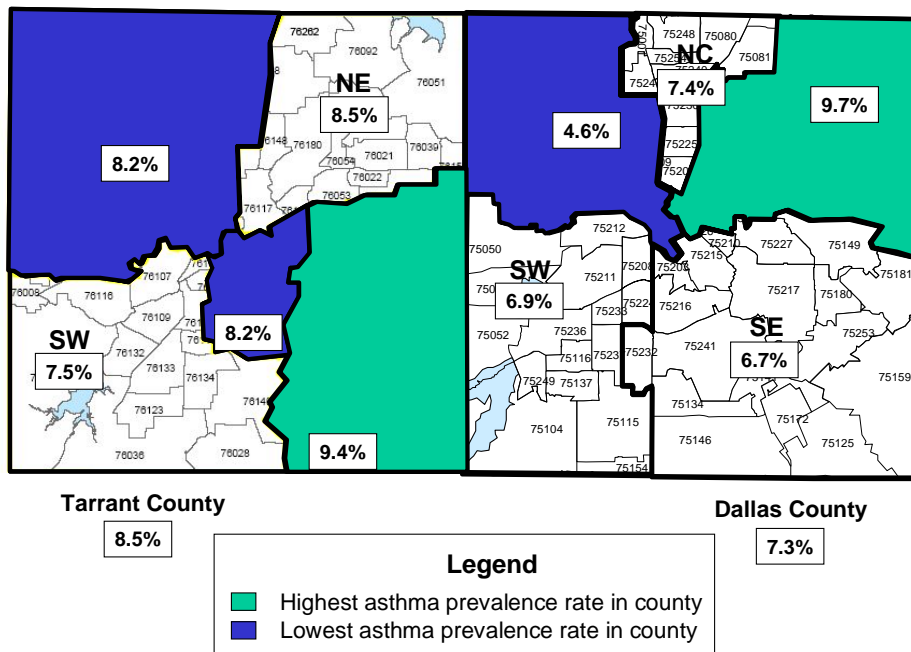
Overall, the percentage of Dallas County residents who have been diagnosed with diabetes is not significantly different from that of Tarrant County residents. No demographic groups showed a significant difference in the prevalence of diabetes between the two counties (Table 5). The prevalence of diabetes in Dallas County was slightly lower than Texas (7.9% in 2005), but comparable to the United States (7.3% in 2005); while the prevalence in Tarrant County was lower than Texas and the United States (Table 5-1).

Current Asthma

The CDC’s National Health Interview Survey estimates that in 2004, 8.4 million children and 6.6 million adults had asthma. During 2002-2004, asthma accounted for an average of 518,000 hospitalizations annually (USDHHS, CDC web site, <http://209.217.72.34/HDAA/TableViewer/tableView.aspx?ReportId=136>). In 2002 asthma accounted for 13.9 million outpatient visits and 1.9 million ED visits (USDHHS, CDC web site <http://209.217.72.34/HDAA/tableviewer/document.aspx?FileId=54>). Respondents were asked a number of questions about their history of asthma, from which lifetime and current asthma prevalence and other rates were derived.

The percentage of Dallas County residents who reported current asthma is not significantly different from that of Tarrant County residents (Table 6). A comparison of the demographic distributions, however, demonstrates that Whites and the self-employed had a significantly higher asthma prevalence in Dallas County than Tarrant County, and residents in the lowest income bracket and with the lowest education level had a significantly higher asthma prevalence in Tarrant County than in Dallas County (Table 6). The prevalence of asthma in Dallas County was higher than Texas and lower than the United States; while, the prevalence in Tarrant County was higher than Texas and the United States (DC-7.3% vs. TC-8.5% vs. TX-6.8% vs. US-8.0%) (Table 6-1). Figure 5 illustrates the geographic distribution of current asthma in Tarrant and Dallas Counties.

**Figure 5.
Percent That Currently Have Asthma**



Cardiovascular Health

Heart disease and stroke are the first and third leading causes of death for both men and women in the United States, accounting for over 35% of all deaths in 2002 (National Heart Lung and Blood Institute, *Morbidity & Mortality 2004 Chartbook on Cardiovascular, Lung and Blood Diseases*, p. 9). Hypertension (high blood pressure) is a major modifiable risk factor for heart disease and stroke. Fifty million Americans have hypertension, and 70% of them do not have it under control. A 12-13 point reduction in blood pressure among people with hypertension can reduce heart attacks by 21%, strokes by 37% and total cardiovascular disease by 25% (USDHHS, *The Burden of Chronic Diseases and Their Risk Factors*, p. 50).

The percentage of Dallas County residents who reported hypertension, heart attack and stroke was not significantly different from Tarrant County residents (Tables 7, 8, & 9). The prevalence of a past heart attack, however, was significantly higher for Dallas County residents who were White, and for ages 45-54 (Table 8).

The prevalence of hypertension in Dallas County was higher than Tarrant County, comparable to Texas, and lower than the United States (DC-24.3% vs. TC-23.1% vs. TX-24.3% vs. US-25.5%) (Table 7-1). The prevalence of residents who reported having a heart attack in Dallas County was higher than Tarrant County, but lower than Texas and the United States (DC-2.8% vs. TC-2.2% vs. TX-3.9% vs. US-4.1%). The prevalence of resident who reported having a stroke in Dallas County was also higher than Tarrant County, but lower than Texas and the United States (DC-2.3% vs. TC-1.8% vs. TX-2.8% vs. US-2.6%) (Table 9-1).

Fruit and Vegetable Consumption

Nutritional factors contribute substantially to the burden of preventable illnesses and premature deaths in the United States. A primary concern is consuming too much saturated fat and too few vegetables, fruits, and grain products that are high in vitamins, minerals, carbohydrates, fiber, and other substances that are important to good health (USDHHS, *Healthy People 2010*, p. 19-3).

Although there was a four percent difference in the weighted proportions of Tarrant County (25.9% in 2004) and Dallas County (21.8% in 2005) residents who met the recommendations for consumption of five servings of fruits and vegetables, the difference was not statistically significant (Table 10). In Tarrant County, however, women were significantly more likely to consume five servings of fruits and vegetables per day than Dallas County women (DC-20.3% vs. TC-29.6%) (Table 10). While the number of residents in Tarrant County who met the recommendations for consumption of five servings of fruits and vegetables a day in Tarrant County was higher than Texas and the United States, the percent in Dallas County was lower than Texas and the United States (TX-22.6% vs. US-23.2%) (Table 10-1).

Cigarette Smoking

Tobacco use is the single most preventable cause of death and disease in the United States. Smokers who quit will, on average, live longer and have fewer years of disability. Cigarette smoking is responsible for more than 440,000 deaths each year, or one in every five deaths. Almost 10% of these deaths are a result of exposure to second hand smoke (USDHHS, *The Burden of Chronic Diseases and Their Risk*

Factors, p. 34). Paralleling this enormous health toll is the economic burden of tobacco use: more than \$75 billion per year in medical expenditures and another \$81 billion per year resulting from lost productivity (USDHHS, *The Health Consequences of Smoking: A Report of the Surgeon General*, p. 868).

The proportion of Tarrant County residents who smoke does not differ significantly from that of Dallas County residents (Table 11). Demographic comparisons however demonstrate that adults age 55-64 are significantly more likely to be current smokers in Tarrant County than in Dallas County (DC-15.7% vs. TC-25.5%) (Table 11). Statewide and national smoking prevalence were comparable to Dallas County, but lower than Tarrant County (DC-20.4% vs. TC-22.2% vs. TX-20.0% vs. US-20.6%) (Table 11-1).

Obesity

The prevalence of overweight (BMI 24-29.9) and obesity (BMI 30+) in the United States has increased by 12% and 70%, respectively, over the last 10 years (Mokdad, et al.). Rising rates of obesity raise concern among public health workers because of the implications for health. Being overweight or obese increases the risk of many diseases and health conditions, including hypertension, high cholesterol, high triglycerides, type 2 diabetes, heart disease, stroke, gallbladder disease, osteoarthritis, sleep apnea, and some cancers (USDHHS, *Healthy People 2010*, p. 19-5).

Although there was no significant difference in the overall percentage of obese adults in Dallas County compared to Tarrant County, a demographic comparison revealed that Tarrant County residents who reported an income of \$50,000 and over were significantly more likely to be obese than Dallas County residents (DC-17.2% vs. TC-25.1%) (Table 12). The prevalence of obesity in Dallas County was lower than Tarrant County and Texas, but higher than the United States (DC-24.8% vs. TC-26.2% vs. TX-27.0% vs. US-23.2%) (Table 12-1).

Cancer Screening

Cancer is the second leading cause of death in the United States. It is also one of the most common chronic diseases. About half of all men and one-third of all women in the United States will get cancer sometime during their lives, and one American death out of every four is due to cancer. In addition to the human toll, the financial costs of cancer are substantial. In 2005 cancers of all kinds cost the nation more than \$74 billion in direct medical costs and \$136 billion in lost productivity. Timely cancer screening is highly cost-effective for society, as well as for individual patients (American Cancer Society, *Cancer Facts and Figures 2006*, p. 1-2).

The proportions of Tarrant County residents who reported ever having had a clinical breast examination (CBE), having had a mammogram in the past 2 years, having had a Pap smear for cervical screening in the past 3 years, having ever had sigmoidoscopy or colonoscopy, having had a blood stool test in the past 2 years and having had a PSA test for prostate cancer in the past 2 years were not significantly different from that of Dallas County residents (Tables 13, 14, 15, 16, 17 & 18). White women and women in households in the highest income bracket were significantly more likely to have had a Pap smear in the past three years in Tarrant County, compared with Dallas County (Table 15). Tarrant County Hispanics were

also significantly more likely to have had a colonoscopy or sigmoidoscopy for colon cancer screening (Table 16). Tarrant County women and Tarrant County residents who are employed were significantly more likely to have had a blood stool test in the past two years (Table 17).

There are no comparable measures in Texas and the United States to compare ever having had a clinical breast exam to Dallas County (87.4%) and Tarrant County (89.5%); however, the percentage of women 40 years of age and over who have had mammogram in the past two years in Dallas County was lower than Tarrant County, higher than Texas, and lower than the United States (DC-69.0% vs. TC-74.0% vs. TX-67.8% vs. US-74.9%) (Table 14-1). The percentage of adult women who have had a Pap smear in the past 3 years for cervical cancer screening in Tarrant County was higher than Dallas County and Texas, but lower than the United States (DC-79.8% vs. TC-83.7% vs. TX-82.2% vs. US-86.0%) (Table 15-1). The percentage of adults 50 years of age and older who have ever had a colonoscopy or sigmoidoscopy for colon cancer screening in Dallas County was higher than Tarrant County and Texas, but lower than the United States (DC-51.6% vs. TC-50.4% vs. TX-48.4% vs. US-86.0%) (Table 16-1). The percentage of residents in Tarrant County and Dallas County who have had a blood stool test in the past 2 years was lower than both Texas and the United States (DC-24.2% vs. TC-29.6% vs. TX-23.4% vs. US-26.5%) (Table 17-1). The percentage of residents in Dallas County and Tarrant County who have had a PSA for prostate cancer in the past 2 years was also lower than both Texas and the United States (DC-47.1% vs. TC-46.9% vs. TX-49.4% vs. US-51.8%) (Table 18-1).

Adult Vaccination

Vaccines can prevent the debilitating and in some cases fatal effects of infectious diseases. The vaccine-preventable infections pneumococcal disease and influenza account for more than 30,000 deaths annually in the United States, most of which occur in elderly persons. But vaccines protect more than the vaccinated individual. They also protect society. When vaccination levels in a community are high, the few who cannot be vaccinated—such as young children and persons with contraindications to vaccination—often are indirectly protected because of group immunity (USDHHS, *Healthy People 2010*, p. 14-4).

The proportion of Tarrant County residents age 65 years and older who had an influenza vaccination in the past 12 months and who had a pneumococcal vaccination were not significantly different from that of Dallas County (Tables 19 & 20). Tarrant County residents who listed their occupation as homemaker were significantly more likely to have had an influenza vaccination in the past 12 months (Table 19). The percentage of residents in both counties who received the influenza vaccination was lower than Texas and the United States (DC-60.3% vs. TC-58.2% vs. TX-61.6% vs. US-65.7%) (Table 19-1), although the percentage of lifetime pneumococcal vaccination was slightly higher for each county than Texas or the United States (DC-66.4% vs. TC-66.0% vs. TX-62.2% vs. US-65.9%) (Table 20-1).

Living in a Home with a Loaded and Unlocked Firearm

Firearms are present in about one third of households in the United States (Johnson RM). In 2001, there were 58,841 emergency room visits and 29,573 deaths resulting from gunshot wounds (USDHHS, *MMWR*, 2001; USDHHS, *MMWR*, 1999).

Firearm injuries and fatalities are a combination of accidental and intentional discharges of firearms. Efforts to promote proper storage of firearms in homes may help reduce the risk of assault, intentional self-inflicted and unintentional shootings in the home (USDHHS, *Healthy People 2010*, p. 15-7).

The proportion of Tarrant County residents (4.8%) who live in a home with a loaded and unlocked firearm is not significantly different from that of Dallas County residents (5.0%). There were no significant differences between demographic groups in the two counties (Table 21). There were no comparable measures for Texas and the United States.

Discussion and Conclusion

Since Dallas and Tarrant Counties are contiguous urban areas in the same region with similar social, cultural, and demographic distributions, the similarities between the two populations described in this study are not surprising. Overall, the prevalence of the health risk factors examined was similar between Dallas County and Tarrant County.

The health risk factors that demonstrated significant differences include "Poor or fair health status," "No health care coverage," "Could not see a doctor in the last 30 days due to cost," and "No physical activity in the last 30 days." The reasons for these differences are not immediately obvious. The observed differences in the prevalence of these health risk factors when compared by demographic distribution showed no consistent pattern. Differences in the demographic distribution of the Dallas County residents compared to Tarrant County, however, may provide plausible explanation for some observed differences. The percentage of Whites in Dallas County (38.3%) in the 2005 estimated population was lower than that of Whites in Tarrant County (56.5%), while the percentages of Blacks and Hispanics in Dallas County (20.3%, 36.1%, respectively) were higher than in Tarrant County (13.4%, 24.4%, respectively). Nationally, African Americans and Hispanics are less likely than Whites to have health insurance or be able to receive medical care when needed.

Also, both counties have undergone demographic changes in the last few years, including an influx of persons displaced by hurricanes Katrina and Rita in the Dallas-Fort Worth Metroplex. Hurricanes Katrina and Rita occurred during the end of August and mid-September, 2005. This overlapped with the period of data collection for Dallas County. It is known that many of these people did not have health insurance and may not have had access to medical services when needed because of cost. They may have also tended to perceive their health as poor because of their stressful situation. It is not known how many of those displaced by the hurricanes were respondents in the Dallas County BRFSS survey.

Some of the observed differences in prevalence between specific demographic groups are very intriguing and may merit further exploration. Women in Tarrant County had a lower risk for poor or fair health status, not having health insurance coverage, not having access to medical treatment because of cost, inadequate fruit and vegetable consumption, and inadequate blood stool test for colon cancer screening, compared with Dallas County. People earning over \$50,000 a year reported fair or poor health status more often in Dallas than in Tarrant County, but those earning \$50,000 and over in Tarrant County were more likely to be obese than

those in Dallas County. Are there factors that put those who are employed and homemakers in Tarrant County at a lower health risk than those in Dallas County?

Finally, one cannot discount the problem of multiple comparisons involved in this study. The 95% Confidence Intervals used to determine statistically significant differences in this study are probabilities, not certainties. It is possible for the prevalence in the two counties to vary by pure chance, rather than some underlying health-related reason across the entire population. Considering the large number of comparisons for significance carried out on these data, it is likely that at least one finding would change its statistical significance if a new set of surveys were conducted.

This comparative study is insufficient to resolve all the issues it raises. BRFSS provides a snapshot of the health of a community at a particular point in time. There is a need for further investigation of the observed differences through more comprehensive longitudinal studies, focus groups or informant interviews. This study however provides a sound baseline for future comparisons of health risk factors between Dallas and Tarrant Counties.

| Table 1: General Health Status | | | | | | | | |
|---|----------------------------|---------------|------|----------|-----------------------------|---------------|------|----------|
| Adults who reported their general health as "fair" or "poor" | | | | | | | | |
| | Dallas County, 2005 | | | | Tarrant County, 2004 | | | |
| | % | 95% CI | | N | % | 95% CI | | N |
| TOTAL | 23.7 | 21.2 | 26.3 | 2,305 | 16.0 | 14.3 | 17.9 | 2,561 |
| SEX | | | | | | | | |
| Male | 19.7 | 16.1 | 23.8 | 840 | 15.4 | 12.8 | 18.5 | 984 |
| Female | 27.7 | 24.6 | 31.0 | 1,465 | 16.6 | 14.5 | 19.0 | 1,574 |
| AGE | | | | | | | | |
| 18-24 | 16.8 | 10.3 | 26.2 | 160 | 10.7 | 6.5 | 17.2 | 180 |
| 25-34 | 18.4 | 13.6 | 24.3 | 427 | 9.6 | 6.9 | 13.1 | 504 |
| 35-44 | 25.3 | 20.3 | 31.1 | 448 | 16.2 | 12.6 | 20.6 | 557 |
| 45-54 | 30.0 | 24.5 | 36.1 | 433 | 15.9 | 11.9 | 20.9 | 479 |
| 55-64 | 31.8 | 26.0 | 38.1 | 385 | 24.4 | 19.1 | 30.5 | 379 |
| 65+ | 25.5 | 20.6 | 31.1 | 438 | 27.4 | 22.9 | 32.5 | 430 |
| RACE/ETHNICITY | | | | | | | | |
| White | 15.5 | 12.8 | 18.6 | 1,208 | 12.2 | 10.4 | 14.2 | 1,577 |
| Black | 21.7 | 17.2 | 27.1 | 402 | 19.7 | 15.4 | 25.0 | 431 |
| Hispanic | 34.1 | 29.0 | 39.5 | 592 | 26.5 | 21.6 | 32.0 | 458 |
| Other | 18.4 | 10.6 | 30.2 | 106 | 9.1 | 4.2 | 18.6 | 76 |
| INCOME | | | | | | | | |
| Less than \$15,000 | 43.8 | 34.5 | 53.4 | 305 | 38.0 | 30.9 | 45.7 | 312 |
| \$15,000 - \$24,999 | 38.4 | 32.0 | 45.2 | 436 | 26.0 | 21.1 | 31.6 | 445 |
| \$25,000 - \$34,999 | 19.9 | 14.1 | 27.3 | 233 | 18.5 | 13.1 | 25.4 | 251 |
| \$35,000 - \$49,999 | 15.0 | 10.7 | 20.6 | 271 | 9.7 | 6.7 | 13.8 | 326 |
| \$50,000+ | 12.0 | 9.6 | 14.9 | 1,063 | 5.7 | 4.0 | 7.8 | 873 |
| EDUCATION | | | | | | | | |
| K-11th Grade | 41.5 | 34.8 | 48.6 | 416 | 34.6 | 28.6 | 41.1 | 394 |
| 12th Grade or GED | 27.3 | 22.5 | 32.7 | 550 | 20.0 | 16.4 | 24.2 | 678 |
| Some College | 19.5 | 15.0 | 24.9 | 557 | 13.4 | 10.5 | 17.1 | 687 |
| College Graduate+ | 8.3 | 6.3 | 10.8 | 782 | 5.8 | 4.2 | 7.8 | 789 |
| EMPLOYMENT | | | | | | | | |
| Employed | 19.4 | 16.0 | 23.2 | 1,074 | 12.9 | 10.7 | 15.5 | 1,317 |
| Self-employed | 11.2 | 7.0 | 17.4 | 197 | 6.6 | 3.6 | 1.7 | 206 |
| Out of work for > 1yr | 40.9 | 26.9 | 56.6 | 71 | 27.4 | 15.7 | 43.3 | 66 |
| Out of work for < 1yr | 25.8 | 15.2 | 40.2 | 97 | 7.5 | 3.0 | 17.3 | 83 |
| Homemaker | 31.9 | 25.1 | 39.6 | 273 | 17.9 | 13.0 | 24.0 | 274 |
| Student | 16.6 | 5.6 | 39.9 | 58 | 5.4 | 1.6 | 16.2 | 73 |
| Retired | 24.3 | 19.2 | 30.1 | 397 | 25.6 | 21.1 | 30.7 | 406 |
| Unable to work | 69.0 | 57.5 | 78.5 | 135 | 77.0 | 65.2 | 85.7 | 119 |

Highlighting = statistically significant difference between county survey results

Data Sources: Dallas County BRFSS Report, 2005; Tarrant County BRFSS Report, 2004

| Table 1-1: General Health Status - TX, US, HP 2010 | | | | | |
|---|-------------------------------|--------------------------------|-----------------------|-------------------------------|----------------|
| | Dallas County 2005 | Tarrant County 2004 | Texas 2005 | United States 2005 | HP 2010 |
| | % | % | % | % | % |
| TOTAL | 23.7 | 16.0 | 19.8 | 14.8 | N/A |

Data Sources: Dallas County BRFSS Report, 2005; Tarrant County BRFSS Report, 2004; Texas BRFSS, 2005; United States BRFSS, 2005

N/A = No corresponding Healthy People 2010 Objective

| Table 2: Health Care Coverage | | | | | | | | |
|--|----------------------------|---------------|------|----------|-----------------------------|---------------|------|----------|
| Adults who did not have healthcare coverage | | | | | | | | |
| | Dallas County, 2005 | | | | Tarrant County, 2004 | | | |
| | % | 95% CI | | N | % | 95% CI | | N |
| TOTAL | 38.1 | 35.0 | 41.1 | 2,313 | 23.8 | 21.6 | 26.2 | 2,556 |
| SEX | | | | | | | | |
| Male | 39.9 | 34.9 | 44.8 | 843 | 26.1 | 22.5 | 30.1 | 982 |
| Female | 36.3 | 32.6 | 39.9 | 1,470 | 21.6 | 19.1 | 24.4 | 1,572 |
| AGE | | | | | | | | |
| 18-24 | 49.8 | 38.6 | 61.0 | 159 | 39.8 | 30.9 | 49.3 | 178 |
| 25-34 | 53.8 | 47.3 | 60.3 | 429 | 28.4 | 23.5 | 33.8 | 503 |
| 35-44 | 42.8 | 36.7 | 48.8 | 448 | 29.5 | 24.8 | 34.8 | 557 |
| 45-54 | 32.3 | 26.3 | 38.3 | 433 | 17.3 | 13.6 | 21.9 | 477 |
| 55-64 | 19.2 | 14.3 | 24.2 | 386 | 17.5 | 12.8 | 23.3 | 379 |
| 65+ | 4.1 | 1.8 | 6.5 | 441 | 3.2 | 1.8 | 5.5 | 431 |
| RACE/ETHNICITY | | | | | | | | |
| White | 14.2 | 11.2 | 17.9 | 1,209 | 13.2 | 11.1 | 15.6 | 1,572 |
| Black | 34.2 | 26.9 | 42.2 | 405 | 26.3 | 20.3 | 33.2 | 431 |
| Hispanic | 66.9 | 61.1 | 72.2 | 591 | 53.0 | 47.0 | 58.9 | 458 |
| Other | 29.7 | 19.5 | 42.4 | 108 | 19.0 | 10.2 | 32.4 | 76 |
| INCOME | | | | | | | | |
| Less than \$15,000 | 63.4 | 53.4 | 73.3 | 307 | 50.7 | 42.7 | 58.6 | 312 |
| \$15,000 - \$24,999 | 66.9 | 60.9 | 72.9 | 435 | 52.5 | 46.4 | 58.6 | 446 |
| \$25,000 - \$34,999 | 35.7 | 27.3 | 44.0 | 234 | 29.8 | 22.9 | 37.7 | 251 |
| \$35,000 - \$49,999 | 22.7 | 15.4 | 30.0 | 272 | 14.8 | 10.0 | 21.4 | 324 |
| \$50,000+ | 6.4 | 3.2 | 9.6 | 710 | 5.1 | 3.5 | 7.5 | 872 |
| EDUCATION | | | | | | | | |
| K-11th Grade | 70.4 | 63.6 | 77.3 | 416 | 59.7 | 52.8 | 66.1 | 395 |
| 12th Grade or GED | 47.5 | 41.2 | 53.7 | 553 | 29.0 | 24.3 | 34.2 | 677 |
| Some College | 27.6 | 21.6 | 33.5 | 556 | 15.5 | 12.3 | 19.3 | 685 |
| College Graduate+ | 10.0 | 7.0 | 13.0 | 785 | 8.7 | 6.5 | 11.5 | 786 |
| EMPLOYMENT | | | | | | | | |
| Employed | 35.3 | 31.0 | 39.8 | 1,077 | 20.8 | 17.8 | 24.1 | 1,315 |
| Self-employed | 48.1 | 38.4 | 58.0 | 197 | 31.3 | 23.2 | 40.8 | 204 |
| Out of work for > 1yr | 63.1 | 49.0 | 75.3 | 70 | 49.0 | 32.7 | 65.6 | 66 |
| Out of work for < 1yr | 60.9 | 40.3 | 78.3 | 97 | 58.2 | 43.9 | 71.3 | 82 |
| Homemaker | 57.4 | 49.7 | 64.7 | 272 | 39.9 | 33.1 | 47.2 | 273 |
| Student | 45.5 | 28.5 | 63.7 | 59 | 23.0 | 13.2 | 37.0 | 71 |
| Retired | 4.4 | 2.5 | 7.6 | 398 | 5.1 | 3.2 | 8.2 | 408 |
| Unable to work | 31.8 | 21.9 | 43.6 | 137 | 17.8 | 10.3 | 28.9 | 120 |

Highlighting = statistically significant difference between county survey results

Data Sources: Dallas County BRFSS Report, 2005; Tarrant County BRFSS Report, 2004

| Table 2-1: Health Care Coverage - TX, US, HP 2010 | | | | | |
|--|-------------------------------|--------------------------------|-----------------------|-------------------------------|----------------|
| | Dallas County 2005 | Tarrant County 2004 | Texas 2005 | United States 2005 | HP 2010 |
| | % | % | % | % | % |
| TOTAL | 38.1 | 23.8 | 28.5 | 14.5 | 0.0 |

Data Sources: Dallas County BRFSS Report, 2005; Tarrant County BRFSS Report, 2004; Texas BRFSS, 2005; United States BRFSS, 2005; Healthy People 2010

| Table 3: Medical Cost | | | | | | | | |
|--|----------------------------|---------------|------|----------|-----------------------------|---------------|------|----------|
| Adults who could not see a doctor when they needed to in the past 12 months due to the cost | | | | | | | | |
| | Dallas County, 2005 | | | | Tarrant County, 2004 | | | |
| | % | 95% CI | | N | % | 95% CI | | N |
| TOTAL | 22.2 | 19.5 | 24.9 | 2,311 | 14.7 | 13.1 | 16.6 | 2,557 |
| SEX | | | | | | | | |
| Male | 18.5 | 14.2 | 22.8 | 842 | 10.7 | 8.5 | 13.4 | 984 |
| Female | 25.8 | 22.5 | 29.1 | 1,469 | 18.6 | 16.3 | 21.2 | 1,570 |
| AGE | | | | | | | | |
| 18-24 | 34.6 | 23.2 | 45.9 | 160 | 16.2 | 11.1 | 23.0 | 180 |
| 25-34 | 20.7 | 15.6 | 25.8 | 429 | 16.9 | 13.2 | 21.3 | 504 |
| 35-44 | 25.7 | 20.6 | 30.7 | 447 | 17.6 | 14.0 | 22.0 | 557 |
| 45-54 | 25.0 | 19.5 | 30.6 | 432 | 13.5 | 10.3 | 17.4 | 479 |
| 55-64 | 17.0 | 12.7 | 21.4 | 387 | 13.0 | 9.0 | 18.4 | 378 |
| 65+ | 3.6 | 1.8 | 5.4 | 439 | 6.0 | 3.8 | 9.4 | 428 |
| RACE/ETHNICITY | | | | | | | | |
| White | 12.7 | 10.1 | 15.8 | 1,207 | 11.1 | 9.4 | 13.1 | 1,571 |
| Black | 32.0 | 25.6 | 39.2 | 403 | 21.1 | 15.6 | 27.9 | 433 |
| Hispanic | 28.4 | 23.3 | 34.1 | 593 | 22.8 | 18.4 | 27.9 | 458 |
| Other | 25.4 | 16.4 | 37.1 | 108 | 8.0 | 2.9 | 20.3 | 76 |
| INCOME | | | | | | | | |
| Less than \$15,000 | 39.8 | 29.5 | 50.2 | 305 | 29.2 | 22.8 | 36.5 | 312 |
| \$15,000 - \$24,999 | 33.5 | 27.2 | 39.9 | 436 | 27.9 | 22.7 | 33.7 | 445 |
| \$25,000 - \$34,999 | 23.4 | 16.2 | 30.6 | 233 | 25.6 | 19.2 | 33.3 | 252 |
| \$35,000 - \$49,999 | 17.6 | 11.9 | 23.3 | 273 | 12.2 | 8.7 | 16.9 | 325 |
| \$50,000+ | 6.2 | 3.9 | 8.4 | 708 | 3.6 | 2.2 | 5.7 | 871 |
| EDUCATION | | | | | | | | |
| K-11th Grade | 32.8 | 25.4 | 40.1 | 416 | 25.8 | 20.4 | 31.9 | 393 |
| 12th Grade or GED | 25.1 | 20.0 | 30.2 | 552 | 15.7 | 12.6 | 19.5 | 677 |
| Some College | 23.2 | 17.9 | 28.6 | 556 | 16.7 | 13.2 | 20.8 | 687 |
| College Graduate+ | 8.9 | 6.5 | 11.3 | 784 | 6.6 | 4.9 | 8.9 | 789 |
| EMPLOYMENT | | | | | | | | |
| Employed | 17.2 | 14.2 | 20.7 | 1,076 | 13.3 | 11.3 | 15.7 | 1,315 |
| Self-employed | 20.4 | 14.1 | 28.6 | 197 | 12.8 | 7.1 | 21.9 | 204 |
| Out of work for > 1yr | 47.6 | 33.1 | 62.5 | 71 | 34.6 | 20.7 | 51.7 | 66 |
| Out of work for < 1yr | 47.9 | 29.7 | 66.7 | 97 | 32.8 | 21.3 | 46.7 | 83 |
| Homemaker | 27.5 | 21.2 | 34.9 | 273 | 19.9 | 14.5 | 26.7 | 274 |
| Student | 44.7 | 27.5 | 63.2 | 59 | 7.8 | 3.6 | 16.1 | 73 |
| Retired | 5.1 | 3.0 | 8.5 | 396 | 6.3 | 4.0 | 9.7 | 406 |
| Unable to work | 39.1 | 28.9 | 50.5 | 136 | 34.0 | 23.3 | 46.5 | 119 |

Highlighting = statistically significant difference between county survey results

Data Sources: Dallas County BRFSS Report, 2005; Tarrant County BRFSS Report, 2004

| Table 3-1: Medical Cost - TX, US, HP 2010 | | | | | |
|--|-------------------------------|--------------------------------|-----------------------|-------------------------------|----------------|
| | Dallas County 2005 | Tarrant County 2004 | Texas 2005 | United States 2005 | HP 2010 |
| | % | % | % | % | % |
| TOTAL | 22.2 | 14.7 | 19.1 | 13.6 | N/A |

Data Sources: Dallas County BRFSS Report, 2005; Tarrant County BRFSS Report, 2004; Texas BRFSS, 2005; United States BRFSS, 2005;

N/A = No corresponding Healthy People 2010 Objective

| Table 4: No Physical Activity | | | | | | | | |
|---|----------------------------|---------------|----------|----------|-----------------------------|----------|----------|----------|
| No physical activity in the past 30 days | | | | | | | | |
| | Dallas County, 2005 | | | | Tarrant County, 2004 | | | |
| | % | 95% CI | N | % | 95% CI | N | % | N |
| TOTAL | 29.0 | 26.3 | 31.6 | 2,316 | 23.7 | 21.6 | 25.8 | 1,880 |
| SEX | | | | | | | | |
| Male | 27.0 | 22.8 | 31.2 | 846 | 21.1 | 18.1 | 24.4 | 988 |
| Female | 30.9 | 27.6 | 34.2 | 1,470 | 26.1 | 23.4 | 29.0 | 1,574 |
| AGE | | | | | | | | |
| 18-24 | 24.5 | 16.0 | 33.1 | 161 | 19.2 | 12.8 | 27.7 | 180 |
| 25-34 | 30.8 | 24.7 | 36.9 | 430 | 20.3 | 16.5 | 24.8 | 505 |
| 35-44 | 29.7 | 24.2 | 35.2 | 449 | 22.2 | 18.1 | 26.8 | 557 |
| 45-54 | 24.9 | 19.3 | 30.6 | 433 | 23.7 | 19.2 | 28.9 | 479 |
| 55-64 | 29.6 | 23.8 | 35.3 | 387 | 28.8 | 23.0 | 34.9 | 380 |
| 65+ | 34.5 | 28.8 | 40.1 | 439 | 34.1 | 29.1 | 39.6 | 432 |
| RACE/ETHNICITY | | | | | | | | |
| White | 18.3 | 15.7 | 21.3 | 1,209 | 19.9 | 17.7 | 22.4 | 1,578 |
| Black | 27.8 | 22.5 | 34.0 | 405 | 27.6 | 22.1 | 33.8 | 433 |
| Hispanic | 41.6 | 36.1 | 47.2 | 595 | 30.7 | 25.6 | 36.3 | 459 |
| Other | 23.8 | 15.2 | 35.2 | 107 | 30.2 | 18.6 | 45.0 | 76 |
| INCOME | | | | | | | | |
| Less than \$15,000 | 45.0 | 35.5 | 54.4 | 307 | 49.5 | 41.5 | 57.5 | 313 |
| \$15,000 - \$24,999 | 39.7 | 33.0 | 46.4 | 436 | 35.3 | 29.6 | 41.3 | 446 |
| \$25,000 - \$34,999 | 30.0 | 22.2 | 37.7 | 234 | 26.6 | 19.9 | 34.5 | 252 |
| \$35,000 - \$49,999 | 22.7 | 16.6 | 28.8 | 273 | 19.2 | 14.6 | 24.8 | 326 |
| \$50,000+ | 12.6 | 9.1 | 16.1 | 710 | 13.1 | 10.6 | 16.1 | 873 |
| EDUCATION | | | | | | | | |
| K-11th Grade | 44.8 | 37.7 | 51.8 | 418 | 41.4 | 34.9 | 48.2 | 396 |
| 12th Grade or GED | 32.7 | 27.1 | 38.3 | 554 | 27.4 | 23.2 | 32.0 | 679 |
| Some College | 25.6 | 20.5 | 30.6 | 556 | 20.8 | 17.2 | 24.9 | 687 |
| College Graduate+ | 14.5 | 11.3 | 17.7 | 785 | 13.9 | 11.2 | 17.0 | 790 |
| EMPLOYMENT | | | | | | | | |
| Employed | 28.0 | 24.3 | 32.0 | 1,079 | 20.1 | 17.5 | 23.0 | 1,317 |
| Self-employed | 20.8 | 13.2 | 31.3 | 197 | 17.3 | 11.7 | 24.7 | 206 |
| Out of work for > 1yr | 34.7 | 22.0 | 50.1 | 72 | 31.4 | 18.3 | 48.2 | 66 |
| Out of work for < 1yr | 18.1 | 10.6 | 29.2 | 97 | 23.5 | 14.0 | 36.7 | 83 |
| Homemaker | 39.3 | 31.9 | 47.2 | 273 | 25.8 | 20.0 | 32.6 | 274 |
| Student | 17.2 | 8.3 | 32.3 | 59 | 26.8 | 15.4 | 42.4 | 73 |
| Retired | 30.3 | 25.0 | 36.3 | 398 | 30.6 | 25.7 | 36.1 | 409 |
| Unable to work | 46.7 | 36.5 | 57.2 | 137 | 62.5 | 50.2 | 73.3 | 120 |

Highlighting = statistically significant difference between county survey results

Data Sources: Dallas County BRFSS Report, 2005; Tarrant County BRFSS Report, 2004

| Table 4-1: No Physical Activity - TX, US, HP 2010 | | | | | |
|--|-------------------------------|--------------------------------|-----------------------|-------------------------------|----------------|
| | Dallas County 2005 | Tarrant County 2004 | Texas 2005 | United States 2005 | HP 2010 |
| | % | % | % | % | % |
| TOTAL | 29.0 | 23.7 | 27.4 | 23.8 | N/A |

Data Sources: Dallas County BRFSS Report, 2005; Tarrant County BRFSS Report, 2004; Texas BRFSS, 2005; United States BRFSS, 2005

N/A = No corresponding Healthy People 2010 Objective

| Table 5: Diabetes | | | | | | | | |
|--|----------------------------|---------------|------|----------|-----------------------------|---------------|------|----------|
| Ever been diagnosed with diabetes | | | | | | | | |
| | Dallas County, 2005 | | | | Tarrant County, 2004 | | | |
| | % | 95% CI | | N | % | 95% CI | | N |
| TOTAL | 7.4 | 6.0 | 8.7 | 2,290 | 5.9 | 5.0 | 7.0 | 2,564 |
| SEX | | | | | | | | |
| Male | 6.6 | 4.7 | 8.6 | 839 | 6.2 | 4.8 | 8.1 | 988 |
| Female | 8.1 | 6.2 | 9.9 | 1,451 | 5.6 | 4.5 | 6.9 | 1,573 |
| AGE | | | | | | | | |
| 18-24 | 0.6 | 0.0 | 1.7 | 157 | 0.0 | 0.0 | 0.0 | 180 |
| 25-34 | 1.2 | 0.0 | 2.4 | 425 | 1.3 | 0.4 | 3.9 | 505 |
| 35-44 | 5.8 | 2.4 | 9.3 | 446 | 3.0 | 1.8 | 5.1 | 557 |
| 45-54 | 11.5 | 7.8 | 15.3 | 429 | 7.5 | 5.1 | 10.9 | 479 |
| 55-64 | 19.2 | 14.2 | 24.2 | 381 | 13.0 | 9.6 | 17.3 | 380 |
| 65+ | 17.6 | 12.4 | 22.8 | 435 | 18.9 | 14.9 | 23.6 | 431 |
| RACE/ETHNICITY | | | | | | | | |
| White | 8.3 | 6.6 | 10.4 | 1,197 | 5.8 | 4.7 | 7.2 | 1,577 |
| Black | 11.5 | 8.2 | 15.9 | 398 | 9.2 | 6.3 | 13.3 | 433 |
| Hispanic | 4.5 | 2.8 | 7.3 | 589 | 5.2 | 3.4 | 7.9 | 459 |
| Other | 9.1 | 3.3 | 22.6 | 106 | 1.5 | 0.2 | 9.8 | 76 |
| INCOME | | | | | | | | |
| Less than \$15,000 | 10.2 | 6.2 | 14.2 | 302 | 10.0 | 6.6 | 14.8 | 313 |
| \$15,000 - \$24,999 | 9.5 | 6.1 | 12.8 | 429 | 10.4 | 7.6 | 14.1 | 445 |
| \$25,000 - \$34,999 | 7.6 | 3.5 | 11.7 | 231 | 6.7 | 4.0 | 11.0 | 252 |
| \$35,000 - \$49,999 | 7.6 | 4.1 | 11.0 | 268 | 3.9 | 2.3 | 6.4 | 326 |
| \$50,000+ | 4.5 | 2.4 | 6.6 | 707 | 3.3 | 2.1 | 5.0 | 873 |
| EDUCATION | | | | | | | | |
| K-11th Grade | 6.3 | 3.5 | 9.1 | 410 | 6.9 | 4.3 | 10.8 | 396 |
| 12th Grade or GED | 9.5 | 6.3 | 12.7 | 545 | 7.0 | 5.2 | 9.4 | 678 |
| Some College | 8.6 | 5.7 | 11.5 | 550 | 6.5 | 4.8 | 8.6 | 687 |
| College Graduate+ | 5.3 | 3.4 | 7.1 | 782 | 4.1 | 2.8 | 5.8 | 790 |
| EMPLOYMENT | | | | | | | | |
| Employed | 4.9 | 3.4 | 7.0 | 1,079 | 3.8 | 2.8 | 5.0 | 1,317 |
| Self-employed | 7.9 | 3.8 | 15.9 | 197 | 3.3 | 0.9 | 11.4 | 206 |
| Out of work for > 1yr | 11.3 | 4.4 | 26.3 | 72 | 12.6 | 4.7 | 29.4 | 66 |
| Out of work for < 1yr | 3.7 | 1.6 | 8.5 | 97 | 7.6 | 2.6 | 19.8 | 83 |
| Homemaker | 5.3 | 2.9 | 9.5 | 272 | 4.6 | 2.6 | 8.0 | 273 |
| Student | 1.5 | 0.2 | 9.5 | 59 | 0.4 | 0.1 | 2.0 | 73 |
| Retired | 18.4 | 13.9 | 23.9 | 398 | 16.5 | 12.7 | 21.1 | 409 |
| Unable to work | 22.9 | 15.9 | 31.9 | 137 | 18.7 | 12.3 | 27.5 | 120 |

Data Sources: Dallas County BRFSS Report, 2005; Tarrant County BRFSS Report, 2004

| Table 5-1: Diabetes - TX, US, HP 2010 | | | | | |
|--|-------------------------------|--------------------------------|-----------------------|-------------------------------|----------------|
| | Dallas County 2005 | Tarrant County 2004 | Texas 2005 | United States 2005 | HP 2010 |
| TOTAL | % 7.4 | % 5.9 | % 7.9 | % 7.3 | % 2.5 |

Data Sources: Dallas County BRFSS Report, 2005; Tarrant County BRFSS Report, 2004; Texas BRFSS, 2005; United States BRFSS, 2005; Healthy People 2010

| Table 6: Current Asthma | | | | | | | | |
|---|----------------------------|---------------|------|----------|-----------------------------|---------------|------|----------|
| Adults who were diagnosed with and still have asthma | | | | | | | | |
| | Dallas County, 2005 | | | | Tarrant County, 2004 | | | |
| | % | 95% CI | | N | % | 95% CI | | N |
| TOTAL | 7.3 | 5.9 | 8.7 | 2,306 | 8.5 | 7.1 | 10.0 | 2,554 |
| SEX | | | | | | | | |
| Male | 5.2 | 3.2 | 7.2 | 842 | 6.1 | 4.4 | 8.3 | 986 |
| Female | 9.4 | 7.4 | 11.3 | 1,464 | 10.8 | 8.9 | 13.1 | 1,565 |
| AGE | | | | | | | | |
| 18-24 | 6.4 | 1.9 | 11.0 | 159 | 16.7 | 9.9 | 26.7 | 177 |
| 25-34 | 3.7 | 1.8 | 5.7 | 430 | 5.7 | 3.8 | 8.5 | 505 |
| 35-44 | 6.5 | 3.4 | 9.7 | 448 | 7.7 | 5.4 | 10.7 | 556 |
| 45-54 | 13.0 | 8.9 | 17.1 | 431 | 8.9 | 6.3 | 12.3 | 479 |
| 55-64 | 7.9 | 4.7 | 11.2 | 382 | 9.2 | 6.4 | 12.9 | 377 |
| 65+ | 9.2 | 5.0 | 13.4 | 439 | 7.4 | 4.9 | 10.8 | 430 |
| RACE/ETHNICITY | | | | | | | | |
| White | 16.8 | 13.9 | 20.2 | 1,209 | 9.4 | 7.7 | 11.5 | 1,568 |
| Black | 13.8 | 9.7 | 19.4 | 405 | 10.0 | 6.6 | 14.8 | 433 |
| Hispanic | 5.9 | 3.9 | 8.9 | 594 | 5.2 | 3.2 | 8.5 | 459 |
| Other | 9.4 | 3.7 | 22.1 | 108 | 9.2 | 3.6 | 21.9 | 76 |
| INCOME | | | | | | | | |
| Less than \$15,000 | 5.4 | 2.7 | 8.0 | 305 | 12.7 | 8.2 | 19.2 | 312 |
| \$15,000 - \$24,999 | 7.2 | 4.0 | 10.4 | 434 | 8.2 | 5.5 | 12.1 | 445 |
| \$25,000 - \$34,999 | 9.6 | 4.6 | 14.6 | 234 | 9.5 | 5.7 | 15.6 | 252 |
| \$35,000 - \$49,999 | 5.9 | 2.6 | 9.3 | 273 | 9.4 | 5.3 | 16.2 | 325 |
| \$50,000+ | 8.5 | 5.5 | 11.4 | 705 | 5.9 | 4.3 | 8.0 | 869 |
| EDUCATION | | | | | | | | |
| K-11th Grade | 3.5 | 1.5 | 5.5 | 416 | 11.3 | 7.5 | 16.6 | 395 |
| 12th Grade or GED | 7.6 | 4.8 | 10.4 | 552 | 9.0 | 6.1 | 13.1 | 675 |
| Some College | 10.1 | 6.7 | 13.4 | 552 | 9.0 | 6.8 | 11.9 | 683 |
| College Graduate+ | 8.0 | 5.2 | 10.8 | 783 | 6.3 | 4.6 | 8.5 | 788 |
| EMPLOYMENT | | | | | | | | |
| Employed | 10.7 | 8.5 | 13.3 | 1,077 | 7.3 | 5.6 | 9.4 | 1,312 |
| Self-employed | 17.0 | 10.6 | 26.2 | 197 | 3.7 | 1.5 | 8.6 | 206 |
| Out of work for > 1yr | 13.1 | 6.1 | 26.0 | 72 | 10.5 | 4.8 | 21.3 | 65 |
| Out of work for < 1yr | 14.9 | 6.4 | 30.9 | 97 | 12.8 | 6.2 | 24.6 | 82 |
| Homemaker | 10.6 | 6.9 | 16.0 | 273 | 6.4 | 3.7 | 10.7 | 273 |
| Student | 12.4 | 3.3 | 36.8 | 59 | 21.2 | 10.9 | 37.3 | 72 |
| Retired | 8.9 | 6.0 | 13.0 | 398 | 7.9 | 5.4 | 11.6 | 407 |
| Unable to work | 23.4 | 16.3 | 32.5 | 137 | 29.0 | 19.7 | 40.5 | 120 |

Highlighting = statistically significant difference between county survey results
 Data Sources: Dallas County BRFSS Report, 2005; Tarrant County BRFSS Report, 2004

| Table 6-1: Current Asthma - TX, US, HP 2010 | | | | | |
|--|-------------------------------|--------------------------------|-----------------------|-------------------------------|----------------|
| | Dallas County 2005 | Tarrant County 2004 | Texas 2005 | United States 2005 | HP 2010 |
| TOTAL | % 7.3 | % 8.5 | % 6.8 | % 8.0 | % N/A |

Data Sources: Dallas County BRFSS Report, 2005; Tarrant County BRFSS Report, 2004; Texas BRFSS, 2005; United States BRFSS, 2005
 N/A = No corresponding Healthy People 2010 Objective

| Table 7: Hypertension | | | | | | | | |
|--|----------------------------|---------------|------|----------|-----------------------------|---------------|------|----------|
| Adults who have ever been diagnosed with hypertension | | | | | | | | |
| | Dallas County, 2005 | | | | Tarrant County, 2004 | | | |
| | % | 95% CI | | N | % | 95% CI | | N |
| TOTAL | 24.3 | 21.7 | 26.8 | 2,238 | 23.1 | 21.1 | 25.1 | 2,506 |
| SEX | | | | | | | | |
| Male | 24.1 | 19.8 | 28.4 | 815 | 23.1 | 20.1 | 26.4 | 967 |
| Female | 24.4 | 21.7 | 27.2 | 1,423 | 23.0 | 20.6 | 25.6 | 1,539 |
| AGE | | | | | | | | |
| 18-24 | 13.5 | 2.6 | 24.4 | 157 | 1.4 | 0.6 | 3.3 | 179 |
| 25-34 | 6.4 | 3.6 | 9.3 | 418 | 8.8 | 6.1 | 12.5 | 459 |
| 35-44 | 16.1 | 12.0 | 20.3 | 438 | 17.5 | 13.7 | 22.0 | 545 |
| 45-54 | 30.8 | 25.0 | 36.6 | 419 | 29.2 | 24.2 | 34.8 | 462 |
| 55-64 | 48.2 | 41.8 | 54.6 | 376 | 43.6 | 37.6 | 49.9 | 372 |
| 65+ | 64.2 | 58.3 | 70.1 | 414 | 60.0 | 54.3 | 65.4 | 420 |
| RACE/ETHNICITY | | | | | | | | |
| White | 30.7 | 27.4 | 34.2 | 1,174 | 25.8 | 23.3 | 28.5 | 1,545 |
| Black | 34.7 | 28.9 | 41.0 | 387 | 32.2 | 26.5 | 38.6 | 419 |
| Hispanic | 13.3 | 9.1 | 19.0 | 574 | 12.5 | 9.3 | 16.6 | 451 |
| Other | 21.7 | 12.6 | 34.9 | 103 | 14.6 | 7.1 | 27.6 | 74 |
| INCOME | | | | | | | | |
| Less than \$15,000 | 30.7 | 20.9 | 40.6 | 300 | 31.0 | 24.5 | 38.2 | 307 |
| \$15,000 - \$24,999 | 23.0 | 17.8 | 28.2 | 418 | 21.4 | 17.1 | 26.3 | 440 |
| \$25,000 - \$34,999 | 22.8 | 16.2 | 29.5 | 228 | 23.1 | 17.5 | 30.0 | 247 |
| \$35,000 - \$49,999 | 23.1 | 17.2 | 29.1 | 267 | 23.2 | 18.3 | 29.0 | 320 |
| \$50,000+ | 24.4 | 20.0 | 28.9 | 694 | 20.9 | 17.8 | 24.4 | 861 |
| EDUCATION | | | | | | | | |
| K-11th Grade | 21.3 | 14.6 | 28.1 | 407 | 21.4 | 16.8 | 26.9 | 387 |
| 12th Grade or GED | 25.1 | 20.6 | 29.6 | 532 | 27.2 | 23.2 | 31.7 | 664 |
| Some College | 26.5 | 21.2 | 31.8 | 535 | 21.4 | 18.1 | 25.1 | 675 |
| College Graduate+ | 24.4 | 20.6 | 28.2 | 761 | 22.1 | 18.7 | 25.9 | 770 |
| EMPLOYMENT | | | | | | | | |
| Employed | 18.0 | 15.1 | 21.3 | 1,049 | 18.0 | 15.6 | 20.7 | 1,285 |
| Self-employed | 22.2 | 14.9 | 31.7 | 189 | 19.4 | 13.7 | 26.8 | 198 |
| Out of work for > 1yr | 23.0 | 13.0 | 37.5 | 69 | 30.6 | 16.7 | 49.2 | 65 |
| Out of work for < 1yr | 26.0 | 10.1 | 52.6 | 95 | 17.3 | 9.4 | 29.5 | 82 |
| Homemaker | 16.1 | 11.6 | 21.9 | 261 | 14.0 | 9.9 | 19.4 | 296 |
| Student | 11.3 | 4.7 | 24.9 | 58 | 2.9 | 0.6 | 11.9 | 73 |
| Retired | 60.7 | 54.4 | 66.8 | 377 | 57.2 | 51.4 | 62.7 | 402 |
| Unable to work | 54.4 | 43.5 | 65.0 | 134 | 65.2 | 52.9 | 75.7 | 117 |

Data Sources: Dallas County BRFSS Report, 2005; Tarrant County BRFSS Report, 2004

| Table 7-1: Hypertension - TX, US, HP 2010 | | | | | |
|--|-------------------------------|--------------------------------|-----------------------|-------------------------------|----------------|
| | Dallas County 2005 | Tarrant County 2004 | Texas 2005 | United States 2005 | HP 2010 |
| | % | % | % | % | % |
| TOTAL | 24.3 | 23.1 | 24.3 | 25.5 | 16.0 |

Data Sources: Dallas County BRFSS Report, 2005; Tarrant County BRFSS Report, 2004; Texas BRFSS, 2005; United States BRFSS, 2005; Healthy People 2010

| Table 8: Heart Attack | | | | | | | | |
|--|----------------------------|---------------|------|----------|-----------------------------|---------------|------|----------|
| Adults who have ever been told they have had a heart attack | | | | | | | | |
| | Dallas County, 2005 | | | | Tarrant County, 2004 | | | |
| | % | 95% CI | | N | % | 95% CI | | N |
| TOTAL | 2.8 | 2.1 | 3.6 | 2,214 | 2.2 | 1.6 | 2.9 | 2,481 |
| SEX | | | | | | | | |
| Male | 3.0 | 2.0 | 4.4 | 805 | 2.4 | 1.5 | 3.7 | 955 |
| Female | 2.5 | 1.7 | 3.8 | 1,409 | 1.9 | 1.4 | 2.8 | 1,526 |
| AGE | | | | | | | | |
| 18-24 | 0.6 | 0.1 | 3.9 | 156 | 0.0 | 0.0 | 0.0 | 180 |
| 25-34 | 0.6 | 0.2 | 1.8 | 414 | 0.2 | 0.0 | 0.6 | 498 |
| 35-44 | 0.5 | 0.1 | 2.1 | 434 | 1.3 | 0.4 | 3.8 | 540 |
| 45-54 | 4.0 | 2.0 | 7.8 | 414 | 0.7 | 0.3 | 1.5 | 460 |
| 55-64 | 7.3 | 4.5 | 11.6 | 372 | 3.9 | 2.1 | 7.1 | 367 |
| 65+ | 9.9 | 6.7 | 14.3 | 408 | 11.6 | 8.3 | 15.8 | 408 |
| RACE/ETHNICITY | | | | | | | | |
| White | 4.4 | 3.2 | 6.1 | 329 | 2.3 | 1.7 | 3.1 | 1,530 |
| Black | 2.6 | 1.3 | 4.9 | 380 | 2.6 | 1.3 | 4.9 | 410 |
| Hispanic | 0.9 | 0.4 | 2.3 | 569 | 0.4 | 0.1 | 1.2 | 450 |
| Other | 2.9 | 0.9 | 9.3 | 103 | 6.7 | 2.0 | 20.4 | 74 |
| INCOME | | | | | | | | |
| Less than \$15,000 | 2.6 | 1.4 | 4.6 | 295 | 5.6 | 3.4 | 9.1 | 42 |
| \$15,000 - \$24,999 | 4.8 | 2.9 | 7.9 | 413 | 3.0 | 1.7 | 5.0 | 57 |
| \$25,000 - \$34,999 | 3.8 | 1.7 | 8.6 | 226 | 3.2 | 1.1 | 8.6 | 24 |
| \$35,000 - \$49,999 | 2.9 | 1.4 | 5.8 | 264 | 0.4 | 0.1 | 2.1 | 21 |
| \$50,000+ | 1.5 | 0.9 | 2.4 | 1,016 | 1.3 | 0.6 | 2.4 | 34 |
| EDUCATION | | | | | | | | |
| K-11th Grade | 2.5 | 1.4 | 4.7 | 400 | 2.4 | 1.3 | 4.3 | 383 |
| 12th Grade or GED | 2.6 | 1.4 | 4.8 | 528 | 1.8 | 1.0 | 3.0 | 654 |
| Some College | 3.1 | 1.8 | 5.2 | 528 | 2.8 | 1.8 | 4.4 | 672 |
| College Graduate+ | 2.7 | 1.7 | 4.4 | 755 | 1.8 | 0.9 | 3.6 | 763 |
| EMPLOYMENT | | | | | | | | |
| Employed | 0.8 | 0.4 | 1.6 | 1,038 | 0.7 | 0.4 | 1.2 | 1,275 |
| Self-employed | 2.7 | 0.8 | 8.3 | 185 | 2.5 | 0.8 | 7.5 | 197 |
| Out of work for > 1yr | 3.5 | 0.6 | 17.2 | 70 | 8.8 | 1.8 | 33.9 | 65 |
| Out of work for < 1yr | 0.4 | 0.1 | 1.8 | 94 | 2.4 | 0.6 | 9.2 | 82 |
| Homemaker | 1.9 | 0.6 | 5.9 | 261 | 1.4 | 0.7 | 3.9 | 268 |
| Student | 1.5 | 0.2 | 9.9 | 58 | -- | -- | -- | 73 |
| Retired | 11.2 | 7.5 | 16.2 | 374 | 7.0 | 4.7 | 10.3 | 390 |
| Unable to work | 14.8 | 8.8 | 23.8 | 128 | 10.6 | 5.8 | 18.7 | 115 |

Highlighting = statistically significant difference between county survey results
 Data Sources: Dallas County BRFSS Report, 2005; Tarrant County BRFSS Report, 2004

| Table 8-1: Heart Attack - TX, US, HP 2010 | | | | | |
|--|-------------------------------|--------------------------------|-----------------------|-------------------------------|----------------|
| | Dallas County 2005 | Tarrant County 2004 | Texas 2005 | United States 2005 | HP 2010 |
| TOTAL | % 2.8 | % 2.2 | % 3.9 | % 4.1 | % N/A |

Data Sources: Dallas County BRFSS Report, 2005; Tarrant County BRFSS Report, 2004;
 Texas BRFSS, 2005; United States BRFSS, 2005
 N/A = No corresponding Healthy People 2010 Objective

| Table 9: Stroke | | | | | | | | |
|--|----------------------------|---------------|------|----------|-----------------------------|---------------|------|----------|
| Adults who have ever been told they have had a stroke | | | | | | | | |
| | Dallas County, 2005 | | | | Tarrant County, 2004 | | | |
| | % | 95% CI | | N | % | 95% CI | | N |
| TOTAL | 2.3 | 1.6 | 3.2 | 2,217 | 1.8 | 1.3 | 2.5 | 2,468 |
| SEX | | | | | | | | |
| Male | 2.4 | 1.4 | 4.2 | 806 | 1.7 | 1.0 | 2.9 | 954 |
| Female | 2.2 | 1.5 | 3.1 | 1,411 | 1.9 | 1.3 | 2.7 | 1,532 |
| AGE | | | | | | | | |
| 18-24 | 0.6 | 0.1 | 3.9 | 156 | 0.1 | 0.0 | 1.0 | 180 |
| 25-34 | 0.1 | 0.0 | 0.6 | 413 | 0.4 | 0.1 | 1.8 | 498 |
| 35-44 | 0.9 | 0.3 | 2.6 | 434 | 0.9 | 0.4 | 2.5 | 540 |
| 45-54 | 3.0 | 1.1 | 7.8 | 415 | 1.5 | 0.6 | 3.5 | 460 |
| 55-64 | 6.0 | 3.4 | 10.5 | 374 | 3.6 | 1.6 | 8.2 | 369 |
| 65+ | 8.4 | 5.5 | 12.5 | 409 | 7.3 | 4.9 | 10.7 | 411 |
| RACE/ETHNICITY | | | | | | | | |
| White | 3.6 | 2.5 | 5.1 | 331 | 2.2 | 1.5 | 3.1 | 1,534 |
| Black | 2.6 | 1.3 | 5.0 | 382 | 2.3 | 1.0 | 5.1 | 413 |
| Hispanic | 0.7 | 0.1 | 3.6 | 568 | 0.2 | 0.1 | 0.8 | 450 |
| Other | 1.8 | 0.6 | 5.5 | 102 | 3.4 | 1.1 | 10.0 | 74 |
| INCOME | | | | | | | | |
| Less than \$15,000 | 3.3 | 1.2 | 8.7 | 299 | 3.3 | 1.9 | 5.8 | 304 |
| \$15,000 - \$24,999 | 3.5 | 2.1 | 6.0 | 414 | 3.4 | 1.9 | 5.9 | 434 |
| \$25,000 - \$34,999 | 1.6 | 0.5 | 5.2 | 225 | 1.4 | 0.5 | 3.7 | 244 |
| \$35,000 - \$49,999 | 2.9 | 1.5 | 5.4 | 263 | 1.0 | 0.4 | 2.8 | 319 |
| \$50,000+ | 1.3 | 0.7 | 2.2 | 1,016 | 1.4 | 0.7 | 2.9 | 857 |
| EDUCATION | | | | | | | | |
| K-11th Grade | 2.2 | 0.9 | 5.6 | 399 | 2.3 | 1.3 | 4.1 | 387 |
| 12th Grade or GED | 2.9 | 1.8 | 4.8 | 530 | 2.2 | 1.1 | 4.4 | 654 |
| Some College | 2.3 | 1.3 | 3.8 | 531 | 2.2 | 1.3 | 3.6 | 671 |
| College Graduate+ | 1.7 | 0.9 | 3.4 | 754 | 0.8 | 0.4 | 1.9 | 765 |
| EMPLOYMENT | | | | | | | | |
| Employed | 1.1 | 0.5 | 2.7 | 1,038 | 0.8 | 0.4 | 1.6 | 1,276 |
| Self-employed | 2.5 | 0.6 | 9.3 | 185 | -- | -- | -- | 197 |
| Out of work for > 1yr | 0.7 | 0.1 | 5.1 | 70 | 1.7 | 0.5 | 5.8 | 65 |
| Out of work for < 1yr | 0.4 | 0.1 | 1.8 | 94 | 0.6 | 0.1 | 4.4 | 82 |
| Homemaker | 1.6 | 0.8 | 3.5 | 261 | 0.8 | 0.2 | 2.8 | 269 |
| Student | 0.0 | -- | -- | 58 | 0.3 | 0.0 | 2.5 | 73 |
| Retired | 8.7 | 5.5 | 13.4 | 376 | 7.0 | 4.6 | 10.6 | 394 |
| Unable to work | 8.9 | 5.1 | 15.0 | 129 | 12.6 | 5.8 | 25.2 | 115 |

Data Sources: Dallas County BRFSS Report, 2005; Tarrant County BRFSS Report, 2004

| Table 9-1: Stroke - TX, US, HP 2010 | | | | | |
|--|-------------------------------|--------------------------------|-----------------------|-------------------------------|----------------|
| | Dallas County 2005 | Tarrant County 2004 | Texas 2005 | United States 2005 | HP 2010 |
| TOTAL | % 2.3 | % 1.8 | % 2.8 | % 2.6 | % N/A |

Data Sources: Dallas County BRFSS Report, 2005; Tarrant County BRFSS Report, 2004; Texas BRFSS, 2005; United States BRFSS, 2005

N/A = No corresponding Healthy People 2010 Objective

| Table 10: Fruit and Vegetable Consumption | | | | | | | | |
|--|----------------------------|---------------|------|----------|-----------------------------|---------------|------|----------|
| Adults who consume five or more servings of fruits and vegetables a day | | | | | | | | |
| | Dallas County, 2005 | | | | Tarrant County, 2004 | | | |
| | % | 95% CI | | N | % | 95% CI | | N |
| TOTAL | 21.8 | 19.4 | 24.2 | 2,318 | 25.9 | 23.7 | 28.2 | 2,458 |
| SEX | | | | | | | | |
| Male | 23.4 | 19.5 | 27.3 | 846 | 22.0 | 18.7 | 25.6 | 948 |
| Female | 20.3 | 17.5 | 23.1 | 1,472 | 29.6 | 26.8 | 32.6 | 1,510 |
| AGE | | | | | | | | |
| 18-24 | 16.6 | 9.9 | 23.4 | 161 | 20.1 | 12.9 | 29.8 | 178 |
| 25-34 | 19.6 | 14.4 | 24.7 | 430 | 25.3 | 20.8 | 30.4 | 491 |
| 35-44 | 24.7 | 19.2 | 30.1 | 449 | 25.7 | 21.4 | 30.6 | 535 |
| 45-54 | 21.4 | 16.5 | 26.3 | 433 | 25.6 | 20.7 | 31.1 | 453 |
| 55-64 | 26.3 | 20.2 | 32.4 | 387 | 27.4 | 22.3 | 33.2 | 367 |
| 65+ | 25.3 | 19.7 | 31.0 | 441 | 31.1 | 26.1 | 36.5 | 407 |
| RACE/ETHNICITY | | | | | | | | |
| White | 23.4 | 20.2 | 26.9 | 1,210 | 27.2 | 24.4 | 30.2 | 1,520 |
| Black | 23.3 | 18.0 | 29.5 | 405 | 26.9 | 21.5 | 33.2 | 405 |
| Hispanic | 18.8 | 14.9 | 23.5 | 595 | 21.4 | 17.0 | 26.6 | 444 |
| Other | 28.4 | 18.2 | 41.4 | 108 | 27.3 | 16.2 | 42.1 | 74 |
| INCOME | | | | | | | | |
| Less than \$15,000 | 23.4 | 16.4 | 30.5 | 307 | 21.5 | 16.1 | 28.2 | 301 |
| \$15,000 - \$24,999 | 16.7 | 11.6 | 21.7 | 436 | 22.4 | 17.9 | 27.7 | 428 |
| \$25,000 - \$34,999 | 20.9 | 13.4 | 28.5 | 234 | 32.1 | 24.9 | 40.2 | 242 |
| \$35,000 - \$49,999 | 25.4 | 18.8 | 31.9 | 273 | 25.9 | 19.6 | 33.4 | 317 |
| \$50,000+ | 25.6 | 21.1 | 30.0 | 710 | 25.5 | 22.1 | 29.2 | 850 |
| EDUCATION | | | | | | | | |
| K-11th Grade | 17.2 | 12.3 | 22.2 | 418 | 17.3 | 13.1 | 22.4 | 382 |
| 12th Grade or GED | 24.2 | 18.8 | 29.5 | 555 | 24.4 | 19.9 | 29.4 | 647 |
| Some College | 21.2 | 16.7 | 25.7 | 557 | 28.0 | 23.7 | 32.4 | 664 |
| College Graduate+ | 24.3 | 20.2 | 28.5 | 785 | 29.7 | 25.9 | 33.8 | 757 |
| EMPLOYMENT | | | | | | | | |
| Employed | 21.9 | 18.6 | 25.6 | 1,079 | 26.9 | 23.7 | 30.2 | 1,256 |
| Self-employed | 25.7 | 18.0 | 35.2 | 197 | 15.9 | 11.0 | 22.4 | 196 |
| Out of work for > 1yr | 15.7 | 7.9 | 28.9 | 72 | 21.7 | 10.5 | 39.6 | 63 |
| Out of work for < 1yr | 27.1 | 15.0 | 43.9 | 97 | 15.8 | 9.3 | 25.4 | 81 |
| Homemaker | 17.5 | 12.9 | 23.4 | 273 | 29.9 | 23.8 | 36.9 | 267 |
| Student | 14.3 | 6.6 | 28.4 | 59 | 19.7 | 10.2 | 32.9 | 73 |
| Retired | 26.0 | 20.8 | 32.0 | 398 | 32.6 | 27.4 | 38.2 | 392 |
| Unable to work | 23.4 | 15.5 | 33.6 | 137 | 19.2 | 11.5 | 30.3 | 115 |

Highlighting = statistically significant difference between county survey results

Data Sources: Dallas County BRFSS Report, 2005; Tarrant County BRFSS Report, 2004

| Table 10-1: Fruit and Vegetable Consumption - TX, US, HP 2010 | | | | | |
|--|-------------------------------|--------------------------------|-----------------------|-------------------------------|----------------|
| | Dallas County 2005 | Tarrant County 2004 | Texas 2005 | United States 2005 | HP 2010 |
| | % | % | % | % | % |
| TOTAL | 21.8 | 25.9 | 22.6 | 23.2 | N/A |

Data Sources: Dallas County BRFSS Report, 2005; Tarrant County BRFSS Report, 2004; Texas BRFSS, 2005; United States BRFSS, 2005

N/A = No corresponding Healthy People 2010 Objective

| Table 11: Current Smoking | | | | | | | | |
|-----------------------------------|----------------------------|---------------|------|----------|-----------------------------|---------------|------|----------|
| Adults who currently smoke | | | | | | | | |
| | Dallas County, 2005 | | | | Tarrant County, 2004 | | | |
| | % | 95% CI | | N | % | 95% CI | | N |
| TOTAL | 20.4 | 17.9 | 23.2 | 2,306 | 22.2 | 20.2 | 24.4 | 2,555 |
| SEX | | | | | | | | |
| Male | 26.1 | 21.7 | 31.1 | 841 | 26.7 | 23.3 | 30.4 | 982 |
| Female | 14.8 | 12.6 | 17.3 | 1,465 | 18.0 | 15.8 | 20.5 | 1,570 |
| AGE | | | | | | | | |
| 18-24 | 23.7 | 15.3 | 34.8 | 161 | 22.5 | 15.7 | 31.2 | 178 |
| 25-34 | 21.9 | 16.1 | 29.0 | 426 | 22.8 | 18.4 | 27.8 | 504 |
| 35-44 | 23.5 | 18.8 | 29.1 | 449 | 26.5 | 22.1 | 31.4 | 555 |
| 45-54 | 21.3 | 16.7 | 26.8 | 433 | 22.3 | 17.9 | 27.5 | 479 |
| 55-64 | 15.7 | 12.0 | 20.2 | 386 | 25.5 | 20.4 | 31.4 | 377 |
| 65+ | 10.1 | 7.3 | 13.8 | 438 | 9.9 | 7.1 | 13.5 | 430 |
| RACE/ETHNICITY | | | | | | | | |
| White | 21.1 | 17.8 | 24.8 | 1,207 | 23.2 | 20.7 | 26.0 | 1,575 |
| Black | 26.8 | 19.8 | 35.1 | 403 | 19.6 | 14.2 | 26.4 | 430 |
| Hispanic | 17.5 | 13.2 | 22.8 | 592 | 20.7 | 16.3 | 25.9 | 455 |
| Other | 17.5 | 10.1 | 28.5 | 107 | 22.7 | 13.2 | 36.2 | 76 |
| INCOME | | | | | | | | |
| Less than \$15,000 | 22.0 | 15.5 | 30.4 | 304 | 28.7 | 21.7 | 36.8 | 312 |
| \$15,000 - \$24,999 | 25.2 | 18.9 | 32.7 | 435 | 25.1 | 20.1 | 30.9 | 443 |
| \$25,000 - \$34,999 | 25.7 | 18.7 | 34.3 | 234 | 28.8 | 22.1 | 36.7 | 252 |
| \$35,000 - \$49,999 | 19.6 | 14.2 | 26.4 | 272 | 22.1 | 16.9 | 28.3 | 325 |
| \$50,000+ | 16.2 | 12.8 | 20.2 | 1,064 | 21.9 | 18.6 | 25.6 | 870 |
| EDUCATION | | | | | | | | |
| K-11th Grade | 22.1 | 16.8 | 28.4 | 417 | 31.7 | 25.5 | 38.6 | 391 |
| 12th Grade or GED | 25.5 | 20.0 | 31.9 | 552 | 27.0 | 22.7 | 31.8 | 678 |
| Some College | 23.4 | 17.9 | 29.9 | 555 | 22.5 | 18.8 | 26.7 | 684 |
| College Graduate+ | 11.8 | 9.0 | 15.3 | 782 | 13.7 | 11.0 | 17.1 | 789 |
| EMPLOYMENT | | | | | | | | |
| Employed | 22.1 | 18.6 | 26.1 | 1,079 | 24.5 | 21.6 | 27.6 | 1,311 |
| Self-employed | 22.6 | 14.7 | 32.9 | 197 | 21.2 | 14.7 | 29.6 | 205 |
| Out of work for > 1yr | 33.3 | 20.3 | 49.4 | 72 | 37.1 | 22.1 | 55.0 | 66 |
| Out of work for < 1yr | 25.1 | 11.2 | 47.0 | 97 | 25.9 | 15.5 | 40.0 | 83 |
| Homemaker | 8.9 | 5.1 | 15.0 | 273 | 11.1 | 7.4 | 16.4 | 273 |
| Student | 20.7 | 8.6 | 42.1 | 59 | 27.7 | 16.5 | 42.6 | 73 |
| Retired | 11.2 | 8.0 | 15.4 | 398 | 12.5 | 9.3 | 16.7 | 407 |
| Unable to work | 35.8 | 25.9 | 47.1 | 137 | 37.3 | 25.5 | 50.8 | 120 |

Highlighting = statistically significant difference between county survey results
 Data Sources: Dallas County BRFSS Report, 2005; Tarrant County BRFSS Report, 2004

| Table 11-1: Current Smoking - TX, US, HP 2010 | | | | | |
|--|-------------------------------|--------------------------------|-----------------------|-------------------------------|----------------|
| | Dallas County 2005 | Tarrant County 2004 | Texas 2005 | United States 2005 | HP 2010 |
| | % | % | % | % | % |
| TOTAL | 20.4 | 22.2 | 20.0 | 20.6 | 12.0 |

Data Sources: Dallas County BRFSS Report, 2005; Tarrant County BRFSS Report, 2004; Texas BRFSS, 2005; United States BRFSS, 2005; Healthy People 2010

| Table 12: Obesity | | | | | | | | |
|--|----------------------------|---------------|------|----------|-----------------------------|---------------|------|----------|
| Adults with a Body Mass Index of 30 or higher | | | | | | | | |
| | Dallas County, 2005 | | | | Tarrant County, 2004 | | | |
| | % | 95% CI | | N | % | 95% CI | | N |
| TOTAL | 24.8 | 22.3 | 27.3 | 2,104 | 26.2 | 23.8 | 28.7 | 2,371 |
| SEX | | | | | | | | |
| Male | 22.0 | 18.3 | 25.7 | 797 | 26.9 | 23.1 | 31.0 | 959 |
| Female | 27.7 | 24.4 | 31.0 | 1,307 | 25.5 | 22.8 | 28.4 | 1,410 |
| AGE | | | | | | | | |
| 18-24 | 13.1 | 6.5 | 19.8 | 134 | 12.7 | 7.9 | 20.0 | 159 |
| 25-34 | 21.4 | 15.8 | 26.9 | 369 | 25.8 | 20.4 | 32.0 | 452 |
| 35-44 | 26.1 | 20.8 | 31.5 | 407 | 30.5 | 25.6 | 35.8 | 527 |
| 45-54 | 32.7 | 26.8 | 38.6 | 403 | 30.8 | 25.5 | 36.6 | 448 |
| 55-64 | 32.7 | 26.6 | 38.9 | 363 | 28.8 | 23.2 | 35.1 | 361 |
| 65+ | 25.6 | 19.9 | 31.2 | 419 | 21.3 | 17.1 | 26.3 | 407 |
| RACE/ETHNICITY | | | | | | | | |
| White | 22.3 | 19.3 | 25.7 | 1,153 | 23.5 | 20.8 | 26.5 | 1,499 |
| Black | 35.2 | 28.8 | 42.1 | 381 | 42.6 | 35.6 | 50.0 | 399 |
| Hispanic | 23.5 | 18.9 | 28.7 | 471 | 27.7 | 21.9 | 34.3 | 389 |
| Other | 21.9 | 12.8 | 35.0 | 99 | 15.8 | 7.2 | 31.1 | 70 |
| INCOME | | | | | | | | |
| Less than \$15,000 | 30.4 | 21.9 | 38.9 | 260 | 28.1 | 21.1 | 36.4 | 279 |
| \$15,000 - \$24,999 | 29.2 | 22.9 | 35.5 | 388 | 28.7 | 23.1 | 35.0 | 402 |
| \$25,000 - \$34,999 | 25.1 | 17.8 | 32.4 | 221 | 29.8 | 22.8 | 37.9 | 244 |
| \$35,000 - \$49,999 | 30.0 | 22.4 | 37.6 | 260 | 24.5 | 19.1 | 30.9 | 306 |
| \$50,000+ | 17.2 | 13.8 | 20.6 | 683 | 25.1 | 21.5 | 29.1 | 847 |
| EDUCATION | | | | | | | | |
| K-11th Grade | 30.3 | 23.5 | 37.2 | 335 | 34.0 | 26.9 | 41.9 | 339 |
| 12th Grade or GED | 25.1 | 20.1 | 30.1 | 495 | 22.1 | 18.1 | 26.7 | 624 |
| Some College | 28.3 | 22.9 | 33.7 | 518 | 30.6 | 26.2 | 35.4 | 642 |
| College Graduate+ | 17.7 | 14.2 | 21.1 | 754 | 22.0 | 18.2 | 26.3 | 757 |
| EMPLOYMENT | | | | | | | | |
| Employed | 24.5 | 21.1 | 28.4 | 984 | 28.1 | 24.8 | 31.8 | 1,221 |
| Self-employed | 18.7 | 12.7 | 26.7 | 185 | 22.8 | 15.7 | 31.8 | 201 |
| Out of work for > 1yr | 24.3 | 13.9 | 38.8 | 67 | 42.5 | 26.3 | 60.4 | 60 |
| Out of work for < 1yr | 21.5 | 12.2 | 35.0 | 91 | 21.7 | 12.4 | 35.3 | 75 |
| Homemaker | 26.1 | 19.5 | 33.9 | 216 | 21.0 | 15.4 | 27.8 | 226 |
| Student | 8.4 | 3.1 | 20.9 | 52 | 12.8 | 6.0 | 25.5 | 70 |
| Retired | 25.6 | 20.3 | 31.8 | 377 | 24.3 | 19.7 | 29.6 | 390 |
| Unable to work | 52.6 | 41.5 | 63.3 | 129 | 38.0 | 26.4 | 51.2 | 114 |

Highlighting = statistically significant difference between county survey results
 Data Sources: Dallas County BRFSS Report, 2005; Tarrant County BRFSS Report, 2004

| Table 12-1: Obesity - TX, US, HP 2010 | | | | | |
|--|-------------------------------|--------------------------------|-----------------------|-------------------------------|----------------|
| | Dallas County 2005 | Tarrant County 2004 | Texas 2005 | United States 2004 | HP 2010 |
| | % | % | % | % | % |
| TOTAL | 24.8 | 26.2 | 27.0 | 23.2 | 15.0 |

Data Sources: Dallas County BRFSS Report, 2005; Tarrant County BRFSS Report, 2004; Texas BRFSS, 2005; United States BRFSS, 2004; Healthy People 2010

| Table 13: Clinical Breast Exam | | | | | | | | |
|--|----------------------------|---------------|------|----------|-----------------------------|---------------|------|----------|
| Adult women that have ever had a clinical breast exam | | | | | | | | |
| | Dallas County, 2005 | | | | Tarrant County, 2004 | | | |
| | % | 95% CI | | N | % | 95% CI | | N |
| TOTAL | 87.4 | 84.6 | 89.7 | 1,456 | 89.5 | 87.1 | 91.5 | 1,557 |
| AGE | | | | | | | | |
| 18-24 | 76.1 | 63.6 | 85.3 | 96 | 74.8 | 61.3 | 84.7 | 106 |
| 25-34 | 88.9 | 83.3 | 92.8 | 272 | 87.3 | 81.8 | 91.3 | 317 |
| 35-44 | 83.8 | 76.6 | 89.2 | 271 | 90.5 | 85.7 | 93.9 | 326 |
| 45-54 | 96.5 | 92.5 | 98.4 | 269 | 96.0 | 91.9 | 98.1 | 276 |
| 55-64 | 90.7 | 84.1 | 94.7 | 243 | 93.0 | 87.3 | 96.3 | 223 |
| 65+ | 88.2 | 82.7 | 92.1 | 292 | 94.4 | 90.9 | 96.6 | 282 |
| RACE/ETHNICITY | | | | | | | | |
| White | 94.2 | 91.7 | 96.0 | 773 | 95.4 | 93.3 | 96.9 | 967 |
| Black | 88.3 | 81.6 | 92.8 | 262 | 85.0 | 76.7 | 90.8 | 295 |
| Hispanic | 79.1 | 72.7 | 84.3 | 364 | 77.9 | 70.9 | 83.6 | 255 |
| Other | 80.3 | 64.2 | 90.2 | 57 | 68.4 | 43.7 | 85.8 | 34 |
| INCOME | | | | | | | | |
| Less than \$15,000 | 75.5 | 66.2 | 82.8 | 215 | 79.7 | 70.0 | 86.8 | 223 |
| \$15,000 - \$24,999 | 85.7 | 79.0 | 90.5 | 276 | 87.2 | 81.3 | 91.4 | 288 |
| \$25,000 - \$34,999 | 94.2 | 87.5 | 97.4 | 130 | 84.3 | 72.3 | 91.6 | 141 |
| \$35,000 - \$49,999 | 92.0 | 80.9 | 96.9 | 164 | 95.3 | 90.1 | 97.9 | 194 |
| \$50,000+ | 89.7 | 85.5 | 92.8 | 671 | 97.5 | 94.9 | 98.8 | 480 |
| EDUCATION | | | | | | | | |
| K-11th Grade | 78.2 | 70.2 | 84.5 | 252 | 77.5 | 69.9 | 83.6 | 236 |
| 12th Grade or GED | 80.9 | 74.0 | 86.3 | 363 | 87.8 | 82.5 | 91.7 | 431 |
| Some College | 92.6 | 88.9 | 95.1 | 390 | 90.7 | 85.4 | 94.3 | 447 |
| College Graduate+ | 96.7 | 93.2 | 98.4 | 450 | 95.3 | 92.1 | 97.3 | 436 |
| EMPLOYMENT | | | | | | | | |
| Employed | 91.6 | 87.2 | 94.6 | 590 | 89.4 | 85.8 | 92.2 | 722 |
| Self-employed | 93.7 | 84.6 | 97.6 | 99 | 90.8 | 68.9 | 97.8 | 82 |
| Out of work for > 1yr | 83.6 | 62.6 | 94.0 | 53 | 88.2 | 73.9 | 95.2 | 47 |
| Out of work for < 1yr | 88.2 | 74.8 | 94.9 | 61 | 93.5 | 85.2 | 97.3 | 59 |
| Homemaker | 82.2 | 75.5 | 87.4 | 26 | 86.7 | 80.8 | 91.0 | 269 |
| Student | 70.4 | 48.1 | 85.9 | 39 | 74.7 | 46.0 | 91.1 | 35 |
| Retired | 87.8 | 81.1 | 92.3 | 251 | 95.4 | 92.1 | 97.4 | 253 |
| Unable to work | 86.8 | 74.6 | 93.7 | 95 | 94.8 | 87.6 | 97.9 | 83 |

Data Sources: Dallas County BRFSS Report, 2005; Tarrant County BRFSS Report, 2004

There were no corresponding data for Texas or the United States. There were no corresponding Healthy People 2010 objectives.

| Table 14: Mammograms | | | | | | | | |
|---|-------------|---------------|------|----------|-----------------------------|---------------|-------|----------|
| Adult women 40 or older who have had a mammogram within the past 2 years | | | | | | | | |
| Dallas County, 2005 | | | | | Tarrant County, 2004 | | | |
| | % | 95% CI | | N | % | 95% CI | | N |
| TOTAL | 69.0 | 64.8 | 73.0 | 937 | 74.0 | 70.4 | 77.4 | 938 |
| AGE | | | | | | | | |
| 40-44 | 51.9 | 40.9 | 62.7 | 135 | 57.0 | 47.1 | 66.4 | 157 |
| 45-54 | 73.8 | 66.1 | 80.3 | 269 | 75.0 | 68.1 | 80.8 | 279 |
| 55-64 | 69.1 | 61.1 | 76.2 | 242 | 80.2 | 73.5 | 85.5 | 224 |
| 65+ | 77.5 | 69.9 | 83.6 | 291 | 82.6 | 77.0 | 87.1 | 278 |
| RACE/ETHNICITY | | | | | | | | |
| White | 73.0 | 67.9 | 77.6 | 615 | 74.6 | 70.3 | 78.4 | 664 |
| Black | 73.3 | 64.8 | 80.3 | 171 | 71.3 | 60.4 | 80.3 | 188 |
| Hispanic | 52.0 | 39.9 | 63.9 | 117 | 74.1 | 60.8 | 84.1 | 72 |
| Other | 72.7 | 52.1 | 86.6 | 34 | 66.1 | 30.7 | 89.6 | 12 |
| INCOME | | | | | | | | |
| Less than \$15,000 | 44.0 | 33.5 | 55.0 | 133 | 57.6 | 46.0 | 68.4 | 130 |
| \$15,000 - \$24,999 | 54.7 | 43.7 | 65.3 | 158 | 67.2 | 57.8 | 75.4 | 169 |
| \$25,000 - \$34,999 | 70.0 | 55.2 | 81.5 | 79 | 65.0 | 49.9 | 77.6 | 85 |
| \$35,000 - \$49,999 | 80.1 | 68.8 | 88.0 | 106 | 70.4 | 58.5 | 80.1 | 112 |
| \$50,000+ | 79.3 | 73.7 | 83.9 | 461 | 81.1 | 75.0 | 86.0 | 284 |
| EDUCATION | | | | | | | | |
| K-11th Grade | 49.4 | 36.2 | 62.6 | 112 | 59.2 | 46.8 | 70.6 | 123 |
| 12th Grade or GED | 69.7 | 60.8 | 77.3 | 226 | 76.4 | 69.6 | 82.1 | 276 |
| Some College | 72.7 | 65.8 | 78.6 | 283 | 70.5 | 63.5 | 76.7 | 281 |
| College Graduate+ | 74.5 | 67.0 | 80.7 | 315 | 81.9 | 75.4 | 87.1 | 254 |
| EMPLOYMENT | | | | | | | | |
| Employed | 73.1 | 66.0 | 79.2 | 351 | 77.0 | 71.6 | 81.6 | 377 |
| Self-employed | 73.9 | 59.1 | 84.8 | 68 | 65.4 | 49.3 | 78.7 | 55 |
| Out of work for > 1yr | 33.1 | 17.3 | 54.0 | 31 | 62.3 | 41.0 | 79.7 | 30 |
| Out of work for < 1yr | 64.7 | 43.3 | 81.5 | 30 | 67.6 | 42.2 | 85.6 | 31 |
| Homemaker | 62.3 | 49.9 | 73.2 | 116 | 64.3 | 53.1 | 74.2 | 118 |
| Student | 34.5 | 7.6 | 77.1 | 8 | 100.0 | 0.0 | 100.0 | 3 |
| Retired | 76.8 | 68.0 | 83.8 | 246 | 83.7 | 77.6 | 88.3 | 245 |
| Unable to work | 56.3 | 43.1 | 68.6 | 86 | 59.3 | 41.7 | 74.8 | 74 |

Data Sources: Dallas County BRFSS Report, 2005; Tarrant County BRFSS Report, 2004

| Table 14-1: Mammograms - TX, US, HP 2010 | | | | | |
|---|-------------------------------|--------------------------------|-----------------------|-------------------------------|----------------|
| | Dallas County 2005 | Tarrant County 2004 | Texas 2004 | United States 2004 | HP 2010 |
| TOTAL | % 69.0 | % 74.0 | % 67.8 | % 74.9 | % 70.0 |

Data Sources: Dallas County BRFSS Report, 2005; Tarrant County BRFSS Report, 2004; Texas BRFSS, 2004; United States BRFSS, 2004; Healthy People 2010

| Table 15: Cervical Cancer Screening | | | | | | | | |
|--|-------------|---------------|------|----------|-----------------------------|---------------|------|----------|
| Adult women who have had a Pap Test within the past 3 years | | | | | | | | |
| Dallas County, 2005 | | | | | Tarrant County, 2004 | | | |
| | % | 95% CI | | N | % | 95% CI | | N |
| TOTAL | 79.8 | 76.5 | 82.7 | 1,430 | 83.7 | 80.3 | 86.5 | 1,043 |
| AGE | | | | | | | | |
| 18-24 | 71.0 | 55.9 | 82.5 | 94 | 74.2 | 59.6 | 84.9 | 97 |
| 25-34 | 92.8 | 88.3 | 95.6 | 269 | 89.2 | 83.7 | 92.9 | 280 |
| 35-44 | 82.7 | 75.3 | 88.2 | 271 | 83.8 | 77.0 | 88.9 | 262 |
| 45-54 | 82.2 | 75.4 | 87.5 | 267 | 83.8 | 75.4 | 89.8 | 181 |
| 55-64 | 74.3 | 66.2 | 81.1 | 240 | 82.9 | 73.5 | 89.4 | 108 |
| 65+ | 60.7 | 52.7 | 68.2 | 276 | 77.8 | 67.4 | 85.6 | 115 |
| RACE/ETHNICITY | | | | | | | | |
| White | 77.1 | 72.5 | 81.2 | 751 | 87.0 | 83.3 | 90.1 | 617 |
| Black | 83.3 | 76.7 | 88.3 | 261 | 82.4 | 71.8 | 89.6 | 193 |
| Hispanic | 81.5 | 74.5 | 86.9 | 360 | 80.1 | 71.8 | 86.4 | 204 |
| Other | 81.8 | 67.4 | 90.7 | 58 | 58.4 | 33.2 | 79.8 | 26 |
| INCOME | | | | | | | | |
| Less than \$15,000 | 67.9 | 57.3 | 77.0 | 20 | 72.4 | 60.6 | 81.8 | 153 |
| \$15,000 - \$24,999 | 75.6 | 67.2 | 82.4 | 274 | 76.7 | 68.4 | 83.3 | 202 |
| \$25,000 - \$34,999 | 84.8 | 75.6 | 90.9 | 129 | 72.8 | 56.5 | 84.6 | 88 |
| \$35,000 - \$49,999 | 80.8 | 70.4 | 88.2 | 164 | 93.5 | 87.0 | 96.8 | 126 |
| \$50,000+ | 84.7 | 80.3 | 88.3 | 656 | 92.9 | 88.9 | 95.5 | 340 |
| EDUCATION | | | | | | | | |
| K-11th Grade | 75.9 | 66.5 | 83.4 | 246 | 77.2 | 67.2 | 84.9 | 167 |
| 12th Grade or GED | 74.7 | 68.0 | 80.5 | 356 | 84.2 | 76.8 | 89.6 | 271 |
| Some College | 80.5 | 74.1 | 85.6 | 382 | 77.9 | 70.5 | 83.9 | 289 |
| College Graduate+ | 87.6 | 82.9 | 91.2 | 446 | 91.6 | 87.2 | 94.6 | 315 |
| EMPLOYMENT | | | | | | | | |
| Employed | 85.1 | 79.7 | 89.3 | 586 | 88.3 | 84.1 | 91.4 | 523 |
| Self-employed | 81.8 | 70.4 | 89.4 | 99 | 75.7 | 55.2 | 88.8 | 55 |
| Out of work for > 1yr | 67.7 | 49.5 | 81.8 | 53 | 83.8 | 66.5 | 93.1 | 32 |
| Out of work for < 1yr | 89.9 | 78.8 | 95.5 | 60 | 73.7 | 53.1 | 87.4 | 44 |
| Homemaker | 83.5 | 76.9 | 88.5 | 263 | 84.0 | 76.4 | 89.5 | 200 |
| Student | 56.0 | 33.3 | 76.5 | 38 | 63.4 | 37.1 | 83.6 | 33 |
| Retired | 66.3 | 57.5 | 74.1 | 239 | 77.8 | 66.3 | 86.1 | 105 |
| Unable to work | 64.3 | 50.9 | 75.8 | 90 | 70.9 | 44.6 | 88.1 | 47 |

Highlighting = statistically significant difference between county survey results

Data Sources: Dallas County BRFSS Report, 2005; Tarrant County BRFSS Report, 2004

| Table 15-1: Cervical Cancer Screening - TX, US, HP 2010 | | | | | |
|--|-------------------------------|--------------------------------|-----------------------|-------------------------------|----------------|
| | Dallas County 2005 | Tarrant County 2004 | Texas 2004 | United States 2004 | HP 2010 |
| | % | % | % | % | % |
| TOTAL | 79.8 | 83.7 | 82.2 | 86.0 | 90.0 |

Data Sources: Dallas County BRFSS Report, 2005; Tarrant County BRFSS Report, 2004; Texas BRFSS, 2004; United States BRFSS, 2004; Healthy People 2010

| Table 16: Colon Cancer Screening | | | | | | | | |
|---|----------------------------|---------------|------|----------|-----------------------------|---------------|-------|----------|
| Adults 50 and older who have ever had a colonoscopy or sigmoidoscopy | | | | | | | | |
| | Dallas County, 2005 | | | | Tarrant County, 2004 | | | |
| | % | 95% CI | | N | % | 95% CI | | N |
| TOTAL | 51.6 | 47.6 | 55.7 | 1,023 | 50.4 | 46.6 | 54.3 | 1,037 |
| SEX | | | | | | | | |
| Male | 49.1 | 42.4 | 55.8 | 355 | 48.4 | 42.0 | 54.8 | 377 |
| Female | 53.7 | 48.8 | 58.6 | 668 | 52.1 | 47.4 | 56.7 | 660 |
| AGE | | | | | | | | |
| 50-54 | 30.9 | 23.5 | 39.4 | 208 | 33.2 | 24.9 | 42.7 | 214 |
| 55-64 | 55.7 | 49.3 | 62.0 | 379 | 50.4 | 44.1 | 56.6 | 375 |
| 65+ | 63.3 | 56.9 | 69.2 | 419 | 61.6 | 56.0 | 66.9 | 419 |
| RACE/ETHNICITY | | | | | | | | |
| White | 59.7 | 54.9 | 64.4 | 719 | 52.5 | 48.5 | 56.8 | 752 |
| Black | 49.2 | 40.3 | 58.2 | 172 | 49.0 | 39.1 | 59.1 | 184 |
| Hispanic | 18.2 | 10.9 | 28.9 | 91 | 46.3 | 32.5 | 60.8 | 70 |
| Other | 38.9 | 21.5 | 59.6 | 41 | 23.7 | 7.8 | 53.4 | 22 |
| INCOME | | | | | | | | |
| Less than \$15,000 | 40.4 | 30.0 | 51.8 | 141 | 51.6 | 40.3 | 62.8 | 129 |
| \$15,000 - \$24,999 | 44.2 | 34.3 | 54.6 | 160 | 40.2 | 31.8 | 49.1 | 183 |
| \$25,000 - \$34,999 | 43.7 | 32.1 | 56.0 | 90 | 52.0 | 40.6 | 63.3 | 101 |
| \$35,000 - \$49,999 | 65.9 | 55.0 | 75.3 | 122 | 46.4 | 35.6 | 57.5 | 123 |
| \$50,000+ | 55.2 | 49.4 | 60.8 | 510 | 54.4 | 47.7 | 61.0 | 310 |
| EDUCATION | | | | | | | | |
| K-11th Grade | 32.8 | 22.7 | 44.8 | 124 | 53.6 | 42.0 | 64.9 | 131 |
| 12th Grade or GED | 47.5 | 39.7 | 55.5 | 246 | 44.1 | 37.0 | 51.5 | 299 |
| Some College | 53.8 | 46.1 | 61.4 | 264 | 52.7 | 45.2 | 60.1 | 279 |
| College Graduate+ | 60.9 | 54.1 | 67.2 | 387 | 52.6 | 46.1 | 59.1 | 321 |
| EMPLOYMENT | | | | | | | | |
| Employed | 41.4 | 34.4 | 48.8 | 316 | 44.2 | 37.4 | 51.2 | 355 |
| Self-employed | 34.8 | 23.1 | 48.7 | 92 | 38.4 | 27.2 | 51.0 | 94 |
| Out of work for > 1yr | 56.1 | 33.7 | 76.2 | 26 | 29.3 | 12.7 | 54.2 | 25 |
| Out of work for < 1yr | 37.3 | 20.3 | 58.2 | 27 | 38.8 | 16.7 | 66.8 | 16 |
| Homemaker | 49.8 | 36.0 | 63.7 | 71 | 50.4 | 37.3 | 63.4 | 68 |
| Student | 94.6 | 65.2 | 99.4 | 6 | 100.0 | 0.0 | 100.0 | 1 |
| Retired | 65.3 | 59.0 | 71.2 | 376 | 62.7 | 57.0 | 68.1 | 395 |
| Unable to work | 59.8 | 47.5 | 70.9 | 92 | 53.1 | 37.8 | 67.8 | 74 |

Highlighting = statistically significant difference between county survey results
 Data Sources: Dallas County BRFSS Report, 2005; Tarrant County BRFSS Report, 2004

| Table 16-1: Colon Cancer Screening - TX, US, HP 2010 | | | | | |
|---|-------------------------------|--------------------------------|-----------------------|-------------------------------|----------------|
| | Dallas County 2005 | Tarrant County 2004 | Texas 2004 | United States 2004 | HP 2010 |
| | % | % | % | % | % |
| TOTAL | 51.6 | 50.4 | 48.4 | 53.5 | 50.0 |

Data Sources: Dallas County BRFSS Report, 2005; Tarrant County BRFSS Report, 2004; Texas BRFSS, 2004; United States BRFSS, 2004; Healthy People 2010

Table 17: Blood Stool Test

| Adults 50 and over who have had a blood stool test in the past 2 years | | | | | | | | |
|--|---------------------|--------|------|-------|----------------------|--------|------|-----|
| | Dallas County, 2005 | | | | Tarrant County, 2004 | | | |
| | % | 95% CI | | N | % | 95% CI | | N |
| TOTAL | 24.2 | 21.1 | 27.6 | 1,006 | 29.6 | 26.1 | 33.4 | 994 |
| SEX | | | | | | | | |
| Male | 24.7 | 19.7 | 30.5 | 352 | 26.0 | 20.5 | 32.3 | 371 |
| Female | 23.8 | 20.0 | 28.1 | 654 | 32.6 | 28.2 | 37.3 | 623 |
| AGE | | | | | | | | |
| 50-54 | 13.0 | 8.6 | 19.1 | 209 | 18.8 | 11.9 | 28.4 | 215 |
| 55-64 | 25.3 | 20.2 | 31.3 | 377 | 32.4 | 26.8 | 38.6 | 371 |
| 65+ | 31.2 | 25.9 | 37.1 | 420 | 34.7 | 29.5 | 40.3 | 408 |
| RACE/ETHNICITY | | | | | | | | |
| White | 27.8 | 23.8 | 32.1 | 712 | 31.8 | 27.7 | 36.2 | 724 |
| Black | 20.0 | 13.9 | 27.9 | 168 | 29.4 | 21.4 | 38.9 | 176 |
| Hispanic | 8.7 | 4.2 | 17.1 | 89 | 12.8 | 6.1 | 24.9 | 68 |
| Other | 31.6 | 15.9 | 53.1 | 37 | 28.7 | 11.0 | 56.8 | 21 |
| INCOME | | | | | | | | |
| Less than \$15,000 | 17.1 | 11.3 | 25.0 | 137 | 22.4 | 15.0 | 32.1 | 126 |
| \$15,000 - \$24,999 | 20.3 | 13.6 | 29.1 | 160 | 18.9 | 13.1 | 26.4 | 179 |
| \$25,000 - \$34,999 | 16.7 | 9.4 | 27.9 | 90 | 29.1 | 19.6 | 40.9 | 97 |
| \$35,000 - \$49,999 | 35.1 | 25.3 | 46.2 | 122 | 25.7 | 18.0 | 35.4 | 121 |
| \$50,000+ | 26.1 | 21.5 | 31.3 | 497 | 33.1 | 26.9 | 40.0 | 299 |
| EDUCATION | | | | | | | | |
| K-11th Grade | 13.4 | 8.3 | 21.0 | 125 | 17.9 | 11.4 | 26.9 | 128 |
| 12th Grade or GED | 19.6 | 14.5 | 26.1 | 240 | 31.2 | 24.8 | 38.4 | 290 |
| Some College | 21.5 | 16.2 | 28.0 | 261 | 29.8 | 22.6 | 38.3 | 268 |
| College Graduate+ | 33.6 | 27.6 | 40.2 | 379 | 32.5 | 26.7 | 38.9 | 303 |
| EMPLOYMENT | | | | | | | | |
| Employed | 15.4 | 11.1 | 20.9 | 321 | 27.4 | 21.2 | 34.7 | 336 |
| Self-employed | 26.0 | 15.6 | 40.0 | 92 | 20.0 | 12.1 | 31.1 | 95 |
| Out of work for > 1yr | 17.7 | 7.0 | 38.2 | 25 | 14.2 | 4.7 | 35.6 | 22 |
| Out of work for < 1yr | 21.6 | 9.9 | 40.9 | 26 | 20.2 | 6.1 | 49.8 | 15 |
| Homemaker | 20.5 | 11.8 | 33.2 | 73 | 28.3 | 17.4 | 42.6 | 64 |
| Student | 34.9 | 7.7 | 77.5 | 6 | 0.0 | 0.0 | 0.0 | 1 |
| Retired | 32.7 | 27.0 | 38.9 | 370 | 37.5 | 32.0 | 43.3 | 380 |
| Unable to work | 29.4 | 19.6 | 41.5 | 93 | 26.5 | 13.9 | 44.6 | 74 |

Highlighting = statistically significant difference between county survey results
 Data Sources: Dallas County BRFSS Report, 2005; Tarrant County BRFSS Report, 2004

Table 17-1: Blood Stool Test - TX, US, HP 2010

| | Dallas County 2005 | Tarrant County 2004 | Texas 2004 | United States 2004 | HP 2010 |
|--------------|-----------------------|------------------------|---------------|-----------------------|-----------|
| TOTAL | % 24.2 | % 29.6 | % 23.4 | % 26.5 | % 50.0 |

Data Sources: Dallas County BRFSS Report, 2005; Tarrant County BRFSS Report, 2004; Texas BRFSS, 2004; United States BRFSS, 2004; Healthy People 2010

| Table 18: Prostate Cancer Screening | | | | | | | | |
|--|--------------|---------------|-------|----------|-----------------------------|---------------|------|----------|
| Adult men 40 and over who have had a prostate-specific antigen test within the past 2 years | | | | | | | | |
| Dallas County, 2005 | | | | | Tarrant County, 2004 | | | |
| | % | 95% CI | | N | % | 95% CI | | N |
| TOTAL | 47.1 | 41.5 | 52.7 | 519 | 46.9 | 41.8 | 52.1 | 582 |
| AGE | | | | | | | | |
| 40-44 | 23.7 | 14.7 | 35.8 | 94 | 21.1 | 13.7 | 31.1 | 125 |
| 45-54 | 43.1 | 33.5 | 53.2 | 156 | 39.4 | 30.7 | 48.7 | 180 |
| 55-64 | 62.3 | 51.3 | 72.2 | 136 | 67.6 | 57.7 | 76.2 | 143 |
| 65+ | 74.6 | 63.1 | 83.5 | 133 | 78.5 | 69.3 | 85.6 | 134 |
| RACE/ETHNICITY | | | | | | | | |
| White | 52.4 | 45.1 | 59.7 | 323 | 52.5 | 46.5 | 58.5 | 398 |
| Black | 58.8 | 46.7 | 69.9 | 92 | 55.6 | 41.4 | 68.9 | 78 |
| Hispanic | 30.9 | 19.0 | 46.0 | 76 | 32.4 | 21.3 | 45.9 | 83 |
| Other | 22.3 | 10.1 | 42.3 | 28 | 19.8 | 8.0 | 41.1 | 19 |
| INCOME | | | | | | | | |
| Less than \$15,000 | 35.7 | 19.9 | 55.4 | 52 | 31.6 | 17.0 | 51.1 | 53 |
| \$15,000 - \$24,999 | 38.2 | 25.5 | 52.8 | 77 | 32.2 | 21.4 | 45.4 | 90 |
| \$25,000 - \$34,999 | 50.2 | 34.0 | 66.4 | 54 | 39.5 | 25.4 | 55.5 | 62 |
| \$35,000 - \$49,999 | 50.8 | 37.1 | 64.3 | 72 | 55.7 | 40.2 | 70.2 | 69 |
| \$50,000+ | 51.1 | 43.0 | 59.1 | 264 | 52.1 | 44.6 | 59.6 | 246 |
| EDUCATION | | | | | | | | |
| K-11th Grade | 29.0 | 17.9 | 43.4 | 79 | 33.1 | 20.8 | 48.3 | 73 |
| 12th Grade or GED | 45.0 | 33.3 | 57.4 | 110 | 43.5 | 33.5 | 54.1 | 151 |
| Some College | 47.5 | 35.4 | 59.8 | 101 | 49.9 | 39.2 | 60.6 | 130 |
| College Graduate+ | 56.9 | 47.9 | 65.4 | 229 | 53.2 | 45.3 | 60.9 | 226 |
| EMPLOYMENT | | | | | | | | |
| Employed | 38.9 | 31.3 | 47.1 | 244 | 40.3 | 33.5 | 47.5 | 300 |
| Self-employed | 41.7 | 27.8 | 57.0 | 70 | 41.8 | 29.9 | 54.7 | 87 |
| Out of work for > 1yr | 36.9 | 12.3 | 70.8 | 14 | 25.9 | 7.4 | 60.7 | 11 |
| Out of work for < 1yr | 42.0 | 19.4 | 68.5 | 16 | 59.9 | 15.6 | 92.4 | 8 |
| Student | 100.0 | 100.0 | 100.0 | 2 | 0.0 | -- | -- | 1 |
| Retired | 75.9 | 66.5 | 83.3 | 136 | 77.9 | 69.4 | 84.5 | 140 |
| Unable to work | 46.4 | 27.9 | 66.0 | 35 | 38.8 | 18.4 | 64.1 | 30 |

Data Sources: Dallas County BRFSS Report, 2005; Tarrant County BRFSS Report, 2004

| Table 18-1: Prostate Cancer Screening - TX, US, HP 2010 | | | | | |
|--|----------------------|-----------------------|--------------|----------------------|----------------|
| | Dallas County | Tarrant County | Texas | United States | HP 2010 |
| | 2005 | 2004 | 2004 | 2004 | |
| | % | % | % | % | % |
| TOTAL | 47.1 | 46.9 | 49.4 | 51.8 | N/A |

Data Sources: Dallas County BRFSS Report, 2005; Tarrant County BRFSS Report, 2004; Texas BRFSS, 2004; United States BRFSS, 2004

N/A = No corresponding Healthy People 2010 Objective

| Table 19: Influenza Vaccination | | | | | | | | |
|---|----------------------------|---------------|-------|----------|-----------------------------|---------------|------|----------|
| Adults 65 and older who received a flu vaccination in the past 12 months | | | | | | | | |
| | Dallas County, 2005 | | | | Tarrant County, 2004 | | | |
| | % | 95% CI | | N | % | 95% CI | | N |
| TOTAL | 60.3 | 54.2 | 66.2 | 439 | 58.2 | 52.7 | 63.6 | 424 |
| SEX | | | | | | | | |
| Male | 65.0 | 54.8 | 74.0 | 143 | 60.6 | 51.3 | 69.2 | 143 |
| Female | 57.3 | 49.6 | 64.6 | 296 | 56.6 | 49.6 | 63.3 | 281 |
| RACE/ETHNICITY | | | | | | | | |
| White | 63.8 | 57.0 | 70.2 | 353 | 60.0 | 53.9 | 65.8 | 328 |
| Black | 48.7 | 33.3 | 64.3 | 53 | 38.4 | 25.8 | 52.9 | 65 |
| Hispanic | 42.4 | 20.9 | 67.3 | 20 | 55.4 | 28.5 | 79.5 | 19 |
| Other | 53.6 | 21.2 | 83.2 | 14 | 82.8 | 41.3 | 97.0 | 6 |
| INCOME | | | | | | | | |
| Less than \$15,000 | 56.5 | 38.8 | 72.6 | 48 | 49.6 | 36.1 | 63.2 | 74 |
| \$15,000 - \$24,999 | 60.3 | 45.1 | 73.8 | 81 | 54.5 | 42.1 | 66.4 | 88 |
| \$25,000 - \$34,999 | 65.9 | 48.9 | 79.7 | 47 | 60.4 | 43.8 | 74.9 | 43 |
| \$35,000 - \$49,999 | 59.4 | 43.4 | 73.6 | 54 | 67.1 | 51.1 | 79.9 | 47 |
| \$50,000+ | 59.9 | 51.0 | 68.2 | 210 | 66.5 | 52.6 | 78.0 | 63 |
| EDUCATION | | | | | | | | |
| K-11th Grade | 60.5 | 42.1 | 76.3 | 49 | 47.1 | 33.7 | 60.9 | 78 |
| 12th Grade or GED | 58.5 | 46.3 | 69.8 | 115 | 62.2 | 52.5 | 71.0 | 136 |
| Some College | 67.3 | 57.0 | 76.2 | 122 | 53.4 | 42.2 | 64.3 | 99 |
| College Graduate+ | 55.8 | 45.3 | 65.8 | 153 | 64.2 | 53.3 | 73.7 | 105 |
| EMPLOYMENT | | | | | | | | |
| Employed | 48.1 | 30.2 | 66.6 | 43 | 38.3 | 22.2 | 57.3 | 37 |
| Self-employed | 61.4 | 27.2 | 87.1 | 17 | 48.5 | 25.8 | 71.9 | 20 |
| Out of work for > 1yr | 3.3 | 0.4 | 22.8 | 6 | 43.4 | 6.7 | 89.1 | 4 |
| Out of work for < 1yr | 0.0 | -- | -- | 0 | 0.0 | -- | -- | 1 |
| Homemaker | 43.2 | 24.6 | 24.6 | 32 | 70.7 | 51.7 | 84.5 | 30 |
| Student | 100.0 | 100.0 | 100.0 | 2 | 0.0 | -- | -- | 1 |
| Retired | 64.6 | 57.4 | 71.2 | 314 | 60.1 | 53.6 | 66.3 | 308 |
| Unable to work | 50.6 | 29.5 | 71.5 | 26 | 55.1 | 30.4 | 77.5 | 21 |

Highlighting = statistically significant difference between county survey results
 Data Sources: Dallas County BRFSS Report, 2005; Tarrant County BRFSS Report, 2004

| Table 19-1: Influenza Vaccination - TX, US, HP 2010 | | | | | |
|--|-------------------------------|--------------------------------|-----------------------|-------------------------------|----------------|
| | Dallas County 2005 | Tarrant County 2004 | Texas 2005 | United States 2005 | HP 2010 |
| | % | % | % | % | % |
| TOTAL | 60.3 | 58.2 | 61.6 | 65.7 | 90.0 |

Data Sources: Dallas County BRFSS Report, 2005; Tarrant County BRFSS Report, 2004; Texas BRFSS, 2005; United States BRFSS, 2005; Healthy People 2010

| Table 20: Pneumococcal Vaccination | | | | | | | | |
|--|----------------------------|---------------|-------|----------|-----------------------------|---------------|-------|----------|
| Adults 65 and older who have ever received a pneumococcal vaccination | | | | | | | | |
| | Dallas County, 2005 | | | | Tarrant County, 2004 | | | |
| | % | 95% CI | | N | % | 95% CI | | N |
| TOTAL | 66.4 | 60.4 | 71.9 | 425 | 66.0 | 60.3 | 71.2 | 418 |
| SEX | | | | | | | | |
| Male | 63.4 | 53.1 | 72.5 | 138 | 62.0 | 52.4 | 70.8 | 137 |
| Female | 68.3 | 60.7 | 75.0 | 287 | 68.5 | 61.6 | 74.7 | 281 |
| RACE/ETHNICITY | | | | | | | | |
| White | 72.3 | 65.8 | 78.0 | 343 | 68.5 | 62.3 | 74.0 | 325 |
| Black | 34.9 | 22.1 | 50.4 | 52 | 51.0 | 36.4 | 65.5 | 65 |
| Hispanic | 50.5 | 25.8 | 74.9 | 18 | 60.0 | 31.6 | 83.0 | 17 |
| Other | 71.6 | 39.0 | 90.9 | 13 | 48.0 | 11.2 | 87.1 | 6 |
| INCOME | | | | | | | | |
| Less than \$15,000 | 55.7 | 37.5 | 72.5 | 47 | 65.5 | 52.5 | 76.6 | 75 |
| \$15,000 - \$24,999 | 72.8 | 58.9 | 83.4 | 79 | 67.6 | 54.5 | 78.4 | 86 |
| \$25,000 - \$34,999 | 65.0 | 46.5 | 79.9 | 46 | 89.6 | 75.7 | 96.0 | 42 |
| \$35,000 - \$49,999 | 57.0 | 40.7 | 71.9 | 52 | 76.5 | 60.8 | 87.2 | 48 |
| \$50,000+ | 69.1 | 60.5 | 76.6 | 202 | 48.8 | 35.3 | 62.5 | 61 |
| EDUCATION | | | | | | | | |
| K-11th Grade | 65.6 | 47.6 | 80.1 | 47 | 61.3 | 47.4 | 73.6 | 78 |
| 12th Grade or GED | 68.6 | 56.9 | 78.3 | 111 | 76.3 | 66.9 | 83.6 | 134 |
| Some College | 66.9 | 55.5 | 76.7 | 119 | 65.9 | 54.4 | 75.8 | 95 |
| College Graduate+ | 63.8 | 52.8 | 73.5 | 148 | 59.9 | 48.5 | 70.4 | 105 |
| EMPLOYMENT | | | | | | | | |
| Employed | 32.2 | 18.4 | 49.9 | 40 | 34.8 | 19.4 | 54.2 | 35 |
| Self-employed | 60.1 | 26.9 | 86.1 | 17 | 35.1 | 16.3 | 60.0 | 19 |
| Out of work for > 1yr | 3.3 | 0.4 | 22.8 | 6 | 78.4 | 33.7 | 96.3 | 4 |
| Out of work for < 1yr | 0.0 | -- | -- | 0 | 100.0 | 0.0 | 100.0 | 1 |
| Homemaker | 74.2 | 53.0 | 88.0 | 31 | 75.5 | 56.0 | 88.2 | 31 |
| Student | 100.0 | 100.0 | 100.0 | 2 | 100.0 | 0.0 | 100.0 | 1 |
| Retired | 70.1 | 62.9 | 76.4 | 305 | 69.4 | 62.8 | 75.2 | 304 |
| Unable to work | 63.4 | 39.7 | 82.0 | 25 | 83.9 | 62.0 | 94.4 | 21 |

Data Sources: Dallas County BRFSS Report, 2005; Tarrant County BRFSS Report, 2004

| Table 20-1: Pneumococcal Vaccination - TX, US, HP 2010 | | | | | |
|---|-------------------------------|--------------------------------|-----------------------|-------------------------------|----------------|
| | Dallas County 2005 | Tarrant County 2004 | Texas 2005 | United States 2005 | HP 2010 |
| TOTAL | % 66.4 | % 66.0 | % 62.2 | % 65.9 | % 90.0 |

Data Sources: Dallas County BRFSS Report, 2005; Tarrant County BRFSS Report, 2004; Texas BRFSS, 2005; United States BRFSS, 2005; Healthy People 2010

| Table 21: Loaded and Unlocked Firearm | | | | | | | | |
|---|----------------------------|---------------|------|----------|-----------------------------|---------------|------|----------|
| Adults living in a home with a loaded and unlocked firearm | | | | | | | | |
| | Dallas County, 2005 | | | | Tarrant County, 2004 | | | |
| | % | 95% CI | | N | % | 95% CI | | N |
| TOTAL | 5.0 | 3.2 | 6.8 | 2,163 | 4.8 | 3.9 | 6.1 | 2,376 |
| SEX | | | | | | | | |
| Male | 7.8 | 4.3 | 11.3 | 782 | 6.3 | 4.7 | 8.4 | 909 |
| Female | 2.3 | 1.5 | 3.1 | 1,381 | 3.5 | 2.5 | 4.9 | 1,467 |
| AGE | | | | | | | | |
| 18-24 | 7.4 | 0.0 | 16.9 | 155 | 1.8 | 0.5 | 5.9 | 176 |
| 25-34 | 3.4 | 1.2 | 5.7 | 415 | 3.6 | 2.0 | 6.4 | 485 |
| 35-44 | 4.2 | 1.3 | 7.0 | 428 | 4.1 | 2.5 | 6.7 | 530 |
| 45-54 | 4.0 | 1.8 | 6.3 | 401 | 6.0 | 3.5 | 10.3 | 435 |
| 55-64 | 6.5 | 3.8 | 9.2 | 355 | 8.9 | 5.9 | 13.2 | 348 |
| 65+ | 7.1 | 4.0 | 10.1 | 396 | 7.6 | 4.9 | 11.6 | 381 |
| RACE/ETHNICITY | | | | | | | | |
| White | 7.5 | 5.5 | 10.2 | 1,110 | 6.8 | 5.4 | 8.7 | 1,445 |
| Black | 3.8 | 2.1 | 6.8 | 379 | 3.6 | 1.7 | 7.5 | 402 |
| Hispanic | 2.7 | 0.6 | 10.7 | 575 | 1.0 | 0.4 | 2.6 | 445 |
| Other | 5.8 | 2.7 | 12.3 | 99 | 1.0 | 0.2 | 4.0 | 71 |
| INCOME | | | | | | | | |
| Less than \$15,000 | 6.2 | 0.0 | 16.0 | 299 | 1.4 | 0.6 | 3.0 | 299 |
| \$15,000 - \$24,999 | 1.5 | 0.0 | 3.0 | 417 | 1.9 | 0.9 | 3.8 | 428 |
| \$25,000 - \$34,999 | 4.2 | 1.2 | 7.2 | 228 | 3.7 | 2.1 | 6.6 | 238 |
| \$35,000 - \$49,999 | 7.2 | 3.2 | 11.2 | 257 | 6.7 | 3.7 | 11.9 | 307 |
| \$50,000+ | 6.1 | 4.0 | 8.2 | 962 | 6.7 | 4.9 | 9.0 | 818 |
| EDUCATION | | | | | | | | |
| K-11th Grade | 4.8 | 0.0 | 10.8 | 408 | 1.3 | 0.4 | 3.9 | 383 |
| 12th Grade or GED | 3.4 | 1.8 | 5.0 | 516 | 4.2 | 2.8 | 6.4 | 629 |
| Some College | 4.0 | 2.2 | 5.9 | 506 | 6.7 | 4.4 | 10.0 | 640 |
| College Graduate+ | 7.5 | 4.5 | 10.5 | 731 | 5.7 | 4.1 | 7.9 | 718 |
| EMPLOYMENT | | | | | | | | |
| Employed | 4.0 | 2.7 | 6.0 | 1,021 | 4.3 | 3.1 | 6.0 | 1,224 |
| Self-employed | 7.4 | 3.7 | 14.2 | 180 | 9.6 | 5.5 | 16.0 | 191 |
| Out of work for > 1yr | 0.9 | 0.2 | 3.7 | 66 | 1.4 | 0.3 | 5.6 | 61 |
| Out of work for < 1yr | 18.3 | 4.3 | 52.8 | 91 | 2.4 | 0.5 | 10.5 | 79 |
| Homemaker | 1.0 | 0.3 | 3.3 | 256 | 2.4 | 1.0 | 5.8 | 260 |
| Student | 1.1 | 0.2 | 7.7 | 55 | 1.4 | 0.2 | 9.5 | 70 |
| Retired | 9.5 | 6.4 | 13.8 | 360 | 8.9 | 5.9 | 13.3 | 366 |
| Unable to work | 4.2 | 0.8 | 19.6 | 131 | 2.9 | 0.8 | 10.0 | 113 |

Data Sources: Dallas County BRFSS Report, 2005; Tarrant County BRFSS Report, 2004

There were no corresponding data for Texas or the United States. There were no corresponding Healthy People 2010 objectives.

References

- American Cancer Society, *Cancer Facts and Figures, 2006*, Atlanta: American Cancer Society, 2006.
- Gill TM, Feinstein AR, A critical appraisal of the quality of quality-of-life measurements, *JAMA*, 1994, 272:8619-8626.
- Johnson RM, Coyne-Beasley T, Runyan CW, Firearm ownership and storage practices, U.S. households, 1992-2002, *Am J Prev Med.*, 2004, 27:173-182.
- Leplege A, Hunt S, The problem of quality of life in medicine, *JAMA*, 1997, 278:47-50.
- Mokdad A, Bowman BA, Ford ES, Vinicor F, Marks JS, Koplan JP, The continuing epidemics of obesity and diabetes in the United States, *JAMA*, 2001, 286(10):1195-1200.
- Pope AM, Tarlov AR, eds., *Disability in America: Toward a National Agenda for Prevention*. Washington, DC: National Academy Press, 1991.
- U.S. Department of Health and Human Services, CDC web site, Asthma Prevalence, Health Care Use and Mortality, 2002, <http://209.217.72.34/HDAA/tableviewer/document.aspx?FileId=54> accessed November 29, 2006.
- U.S. Department of Health and Human Services, CDC web site, National Diabetes Surveillance System, Number of persons with diagnosed diabetes, United States, 1980-2004, <http://www.cdc.gov/diabetes/statistics/prev/national/figpersons.htm> accessed November 29, 2006.
- U.S. Department of Health and Human Services, CDC web site, National Health Interview Survey, <http://209.217.72.34/HDAA/TableViewer/tableView.aspx?ReportId=136>, accessed November 29, 2006.
- U.S. Department of Health and Human Services, Centers for Disease Control and Prevention. *National diabetes fact sheet: general information and national estimates on diabetes in the United States, 2003*. Rev. ed. Atlanta, GA: U.S. Department of Health and Human Services, Centers for Disease Control and Prevention, 2004.
- U.S. Department of Health and Human Services, Centers for Disease Control and Prevention, National estimates of nonfatal injuries treated in hospital emergency departments—United States, 2000, *MMWR Morb Mort Wkly Rep*, 50 (2001), 340-346.
- U.S. Department of Health and Human Services, Centers for Disease Control and Prevention, Nonfatal and fatal firearm-related injuries—United States, 1993-1997, *MMWR Morb Mort Wkly Rep*, 48 (1999), 1029-1034

U.S. Department of Health and Human Services, Centers for Disease Control and Prevention. *The Burden of Chronic Diseases and Their Risk Factors: National and State Perspectives*. Atlanta, GA: U.S. Department of Health and Human Services, Centers for Disease Control and Prevention, February 2004.

U.S. Department of Health and Human Services. *Healthy People 2010: Understanding and Improving Health*. 2nd ed. Washington, DC: U.S. Government Printing Office, November 2000.

U.S. Department of Health and Human Services, *Physical Activity and Health: a Report of the Surgeon General*. Atlanta, GA: U.S. Department of Health and Human Services, Centers for Disease Control and Prevention, National Center for Chronic Disease Prevention and Health Promotion, 1996.

U.S. Department of Health and Human Services, Public Health Service, National Institutes of Health, National Heart, Lung, and Blood Institute. *Physical Activity and Health: a Report of the Surgeon General*. Bethesda, MD: U.S. Department of Health and Human Services, Public Health Service, National Institutes of Health, 2004.

U.S. Department of Health and Human Services, The impact of smoking on disease and the benefits of smoking reduction, In: *The Health Consequences of Smoking: A Report of the Surgeon General*, Atlanta, Georgia: U.S. Department of Health and Human Services, Centers for Disease Control and Prevention, National Center for Chronic Disease Prevention and Health Promotion, Office on Smoking and Health, 2004:853-93.

Wilson IB, Clear PD, Linking clinical variables with health-related quality of life, *JAMA*, 1995, 273:59.



Parkland
Health & Hospital System

www.pmh.org



Tarrant County
Public Health

<http://health.tarrantcounty.com>