

How to Use the eSlate

The eSlate is a direct record electronic machine that any voter may use though it is provided to allow voters with disabilities, including those who are blind, mobility impaired or lack upper-body dexterity, to vote privately and independently. The eSlate will be in a booth that is wheelchair accessible.



To vote with eSlate

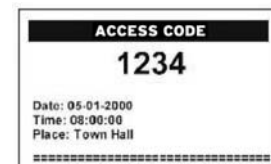
.Select your language

1. Select an English or Spanish ballot by turning the SELECT wheel to highlight your language in red.
2. Press the ENTER button to mark that choice.

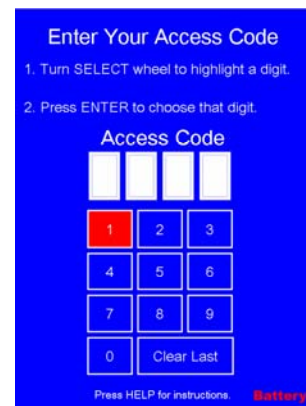


Enter you access code

1. After signing in, as always, you will receive a four-digit access code.

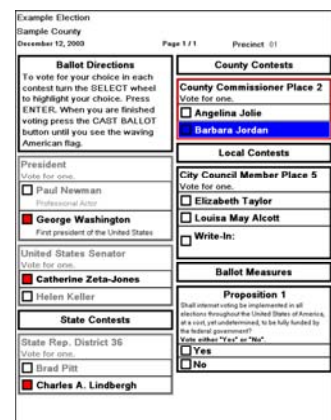


2. Enter the code by turning the SELECT wheel to highlight each number. **Press the ENTER button after highlighting each one.**



Mark your ballot choices

1. Turn the SELECT wheel to highlight your choice.
2. Press the ENTER button to mark that choice.
3. The box beside your choice will turn red and the highlight bar will automatically advance to the next contest.



How to Use the eSlate (continued)

Review your ballot choices


1. At the end of the ballot, a Ballot Summary Page will appear.
2. Review your ballot closely to make sure you voted as intended.
3. If you've skipped a contest, you will see **no selections**.
4. If you want to make a change, follow the instructions you will find on the Ballot Summary Page.

Ballot Summary Page
To change a vote, highlight the contest to change and press ENTER.

Contest	Selected
President	George Washington
United States Senator	Catherine Zeta-Jones
State Rep. District 36	Charles A. Lindbergh
County Commissioner Place 2	Barbara Jordan
City Council Member Place 5	JOHN DOE
Proposition 1	No selections

Press PREV for previous page.
To complete your voting and cast your ballot, press CAST BALLOT.

Press CAST BALLOT button to finish voting

1. If the votes shown on the Ballot Summary Page are like you want them, press the CAST BALLOT button.
2.  You cannot go back once you've pressed CAST BALLOT.



You'll know you are finished when...

You see the waving American flag.



To do a write-in

1. Turn the SELECT wheel to highlight each letter needed to spell your candidate's name.
2. Press the ENTER button after each letter.
3. When finished, turn to Accept and press ENTER. You will be returned to the ballot.

Enter Write-In Candidate

Candidate Name


A	B	C	D	E
F	G	H	I	J
K	L	M	N	O
P	Q	R	S	T
U	V	W	X	Y
Z	Clear List	Space		

Cancel


Accept

Press HELP for instructions.


The SELECT Wheel and Buttons




SELECT wheel
Use to move between choices




ENTER
Press to make a choice




HELP
▶ Press once for instructions
▶ Press twice to get help from a poll worker



PREV to go back a page
NEXT to go forward a page



CAST BALLOT
 Press only when totally finished voting.